

Designers Lighting Forum

Behavioral Health Lighting Solutions: *Concepts, Guidelines, and Strategies for Therapeutic Design*

Laurie Emery, LC, IES

March 19th, 2025

Laurie Emery, LC, IES



As Healthcare Market Development Manager for Visa Lighting. Laurie supports specifiers through training for lighting solutions that enhance healthcare applications and improve patient well-being.

Laurie's background in architecture and electrical design led her to a career in lighting design when she discovered her true passion. This journey was enriched by educational opportunities with the Illuminating Engineering Society (IES), and by obtaining her LC credentials

Laurie continues to leverage her professional lighting design background at Visa Lighting through continual research of modern lighting technology and design trends in the healthcare market. This knowledge allows her to engage with design professionals to promote evidence-based design that encourages healing in healthcare environments.

Credit(s) earned on completion of this course will be reported to **AIA CES** for AIA members. Certificates of Completion for both AIA members and non-AIA members are available upon request.

This course is registered with **AIA CES** for continuing professional education. As such, it does not include content that may be deemed or construed to be an approval or endorsement by the AIA of any

material of construction or any method or manner of handling, using, distributing, or dealing in any material or product.

Questions related to specific materials, methods, and services will be addressed at the conclusion of this presentation.

Learning Objectives

At the end of this course, participants will be able to:

1. Recognize the needs of various patient populations in behavioral health facilities and milieu that determine design concepts to diminish the stigma of mental health through aesthetic choices and control options
2. Identify the current safety guidelines and available standards that apply to lighting design in a behavioral health space
3. Evaluate luminaires and lighting design features that promote safe, therapeutic, patient-centered environments
4. Employ lighting design strategies that take salutogenesis into account during the design and application of lighting product selection
5. Reference real-world examples of successful behavioral health design strategies



Core Topics

1. Patient Needs
2. Standards and Guidelines
3. Therapeutic Design
4. Luminaire Design
5. Lighting Design
6. Applications



Patient Needs

- BH Settings
- Patient Populations
- Diagnosis
- Co-occurrence
- De-stigmatization
- Access to Care

Behavioral Health Settings



Hospitals



Psychiatric Hospitals



Residential Drug and Alcohol



Eating Disorder Recovery



Psychiatric Residential Centers



PHP (Day Programs)



Diagnoses

- Anxiety Disorders
- Depression
- ADHD
- Autism Spectrum
- Neurodivergence
- Bipolar Disorder
- Borderline Personality Disorder
- Eating Disorders
- Obsessive-Compulsive Disorder
- Schizophrenia
- Addiction
- PTSD
- Suicidal Intent



The Need is Great!



Mental Health in New York



1 in 5 U.S. adults experience mental illness each year.



2,802,000 adults in New York have a mental health condition.

That's more than **10X** the population of Buffalo.

New York Mental Health Statistics:

- 145,000 adolescents (aged 12-17) have depression
- 591,000 adults have a serious mental illness
- 35.8% of adults reported symptoms of anxiety or depression in February 2021

On average, 1 person in the U.S. dies by suicide every 11 minutes:

- In New York, 1,723 lives were lost to suicide
- 558,000 had thoughts of suicide last year

Shortage of Mental Health Professionals

- 4,102,718 people in New York live in a community that does not have enough mental professionals
- 20.2% of adults that reported symptoms of anxiety or depression were unable to get needed counseling or therapy

These facts were compiled based on data available in February 2021. For full citations, visit: nami.org/mhpolicystats.



LEDucation.org



Froedtert Health's Complexity
Intervention Unit
Milwaukee, WI
CannonDesign

Comorbidity & Co-occurrence

25-45% of patients admitted for a medical condition also have a mental health condition

68% of people with a mental health condition also have a medical condition



Froedtert Health's Complexity
Intervention Unit
Milwaukee, WI
CannonDesign

Comorbidity & Co-occurrence

Co-morbidities are often unreported, so design must be therapeutic **at all times in all areas**.

Joint Commission: “Ligature points and [other environmental risks] must be identified and removed from **all areas of the hospital**”

What is the Joint Commission?

An accreditation award verifies that a healthcare provider meets the most rigorous quality and safety standards of care for their patients

The mission of The Joint Commission is to continuously improve health care for the public, in collaboration with other stakeholders, by evaluating healthcare organizations and inspiring them to excel in providing safe and effective care of the highest quality and value.



How do we address the community's needs and design?



- Access is in demand
- Standards continue to improve based on the studies
- Making the case to the client for better design decisions

When Budget is the Primary Concern:



When Safety is the Primary Concern:



Therapeutic Design!

Therapeutic design in mental health care is the idea that the **built environment** can be used as a **form of therapy** to support a patient's recovery.

Therapeutic Design!

Therapeutic design principles Include:

- Autonomy
- Connection to the outside
- Safety
- Natural materials
- Biophilic palette
- Noise control / Acoustics
- Privacy
- Positive distraction

Therapeutic Design Solutions



Virginia Treatment Center for Children
Richmond, VA
CannonDesign

Therapeutic Design Solutions



Virginia Treatment Center for
Children
Richmond, VA
CannonDesign

Positive Distraction



Pine Rest Christian Mental
Health Services
Cutlerville, MI
BWBR

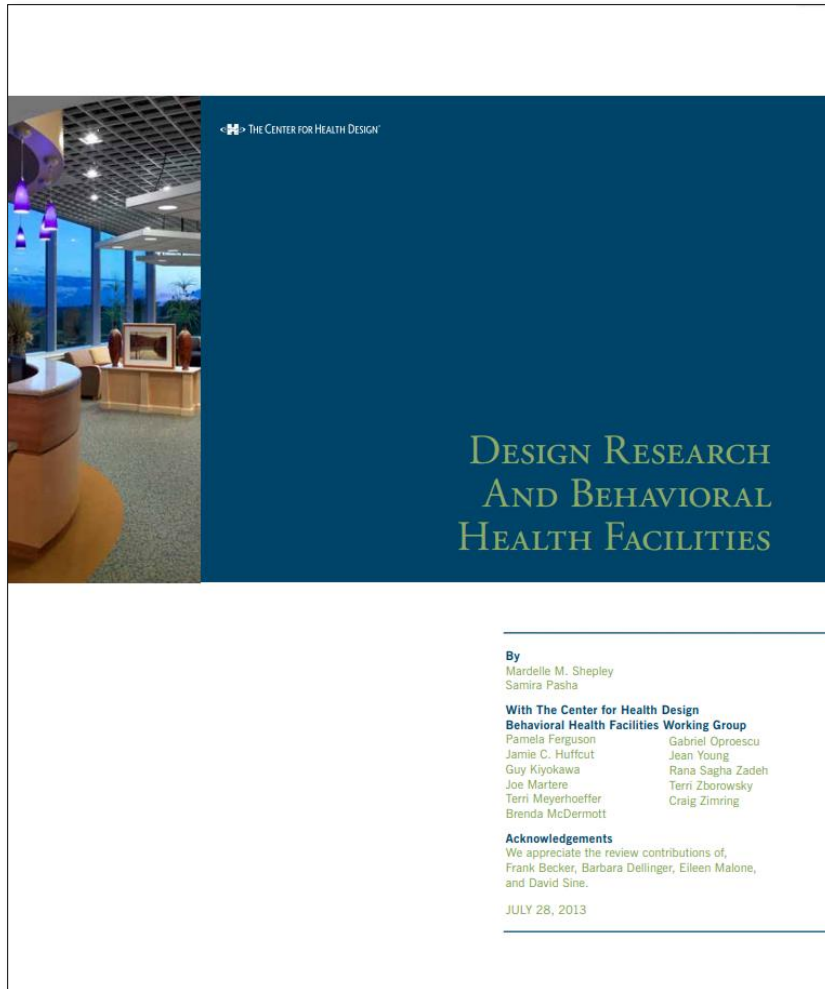




Standards & Guidelines

- CHD
- VA
- BHFC / FGI
- NYS OMH

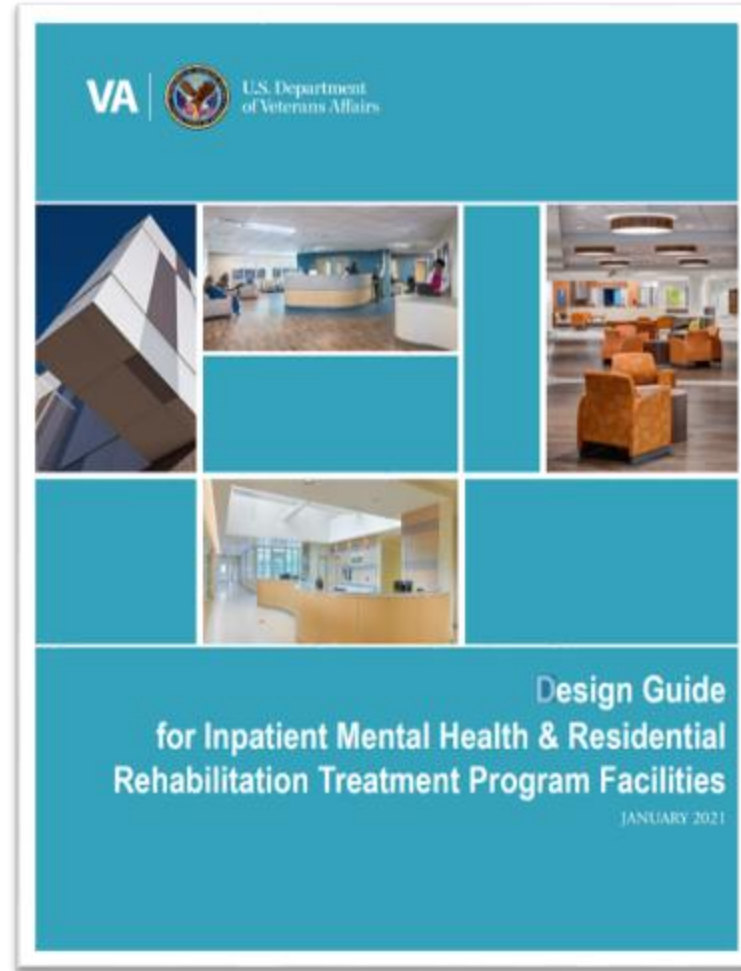
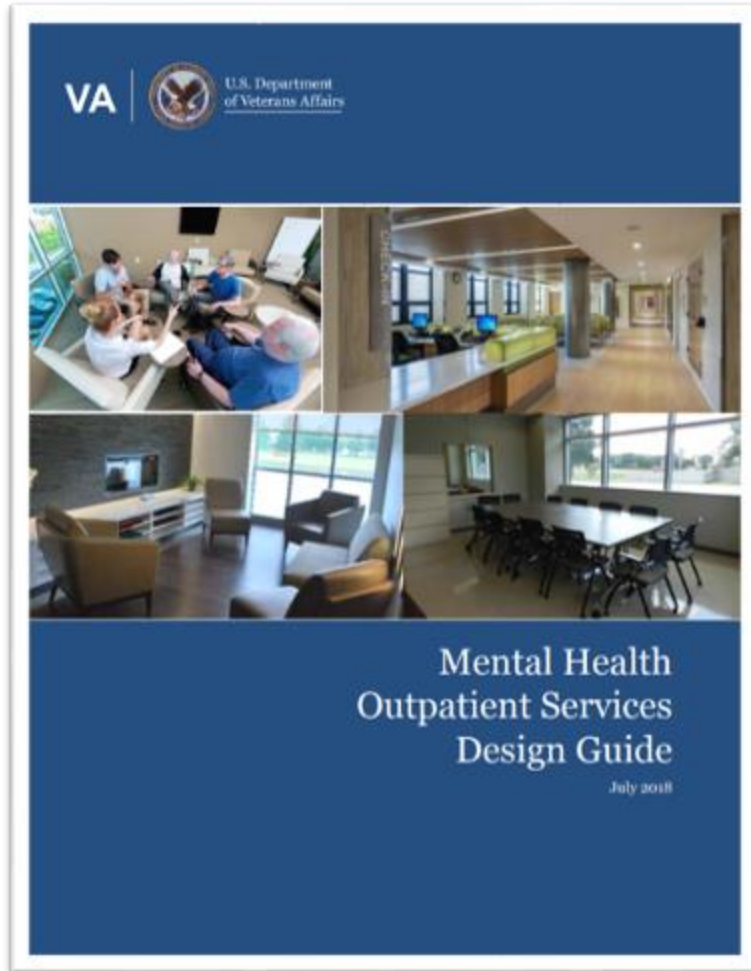
CHD – Design Research and BH Facilities



115 articles from 1960-2013

Consensus

- Control and choice
- Personal space
- Sensory concerns
- Spatial clarity
- Spatial comfort
- Style



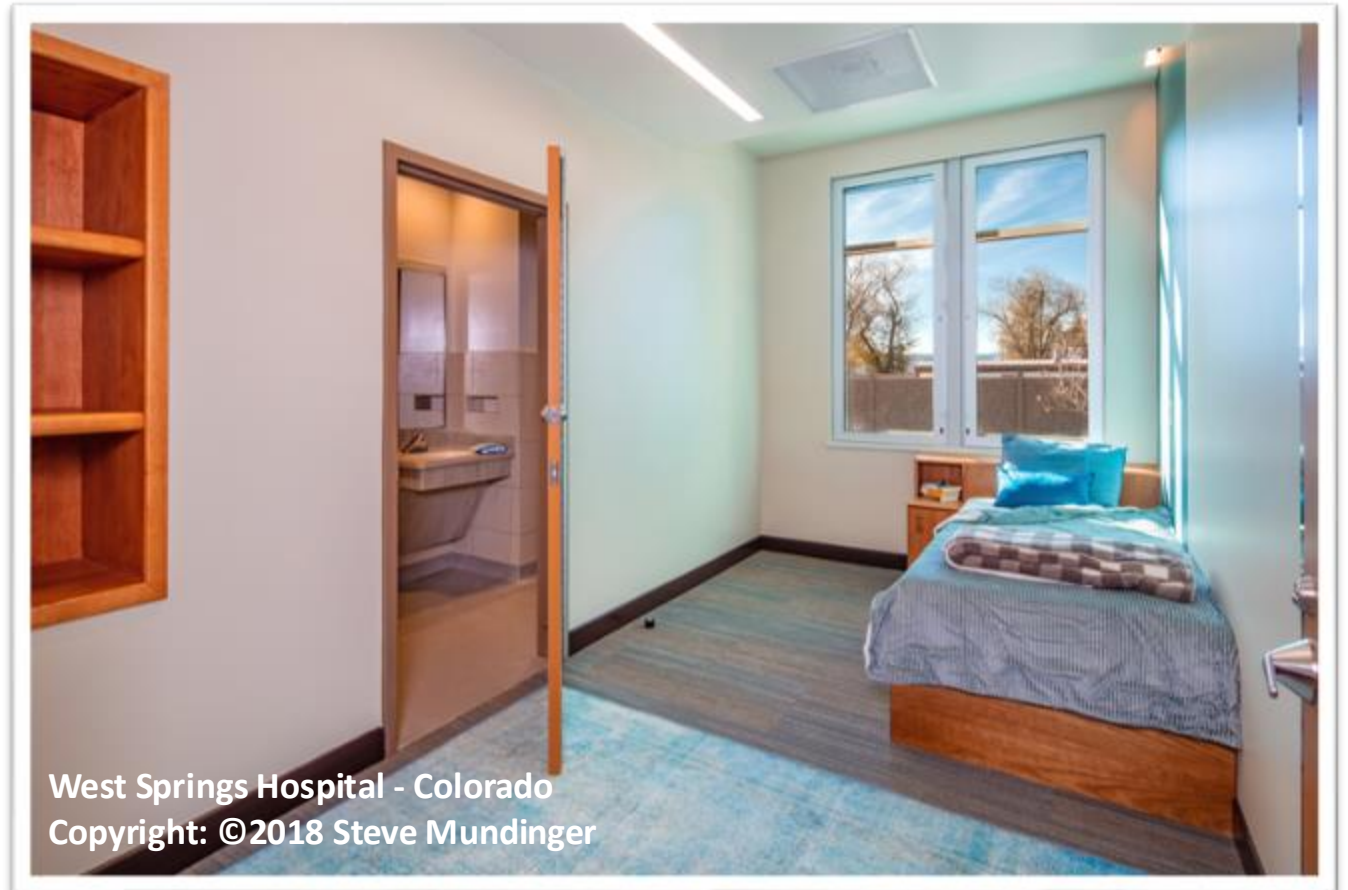
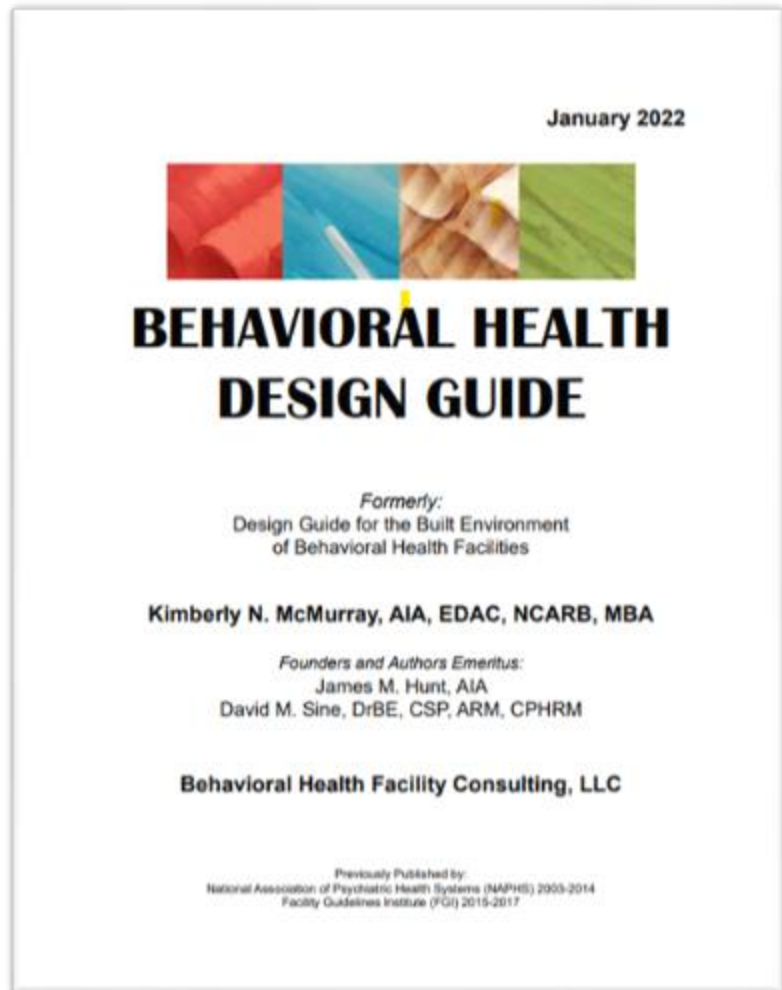
VA Mental Health Facilities Design Guides

VA Mental Health Facilities Design Guide

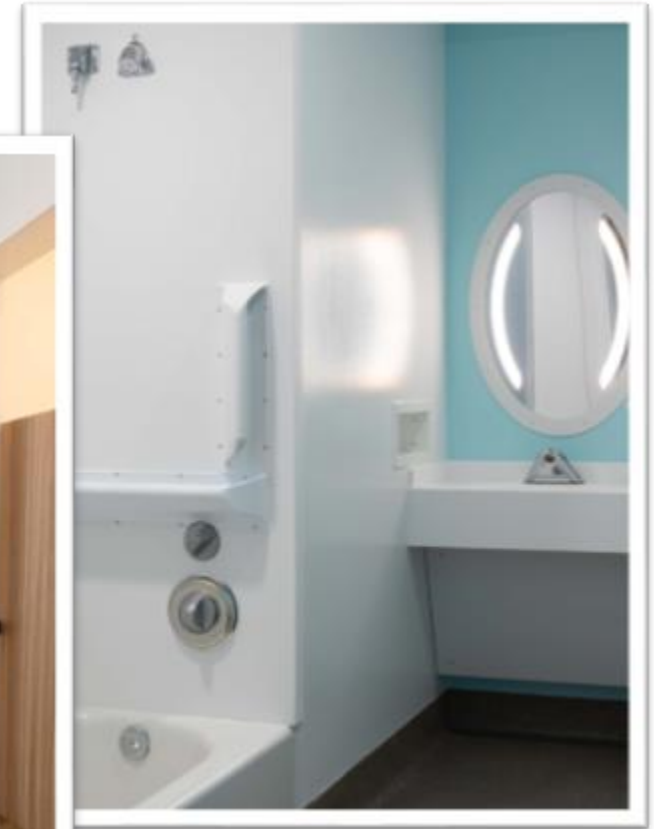
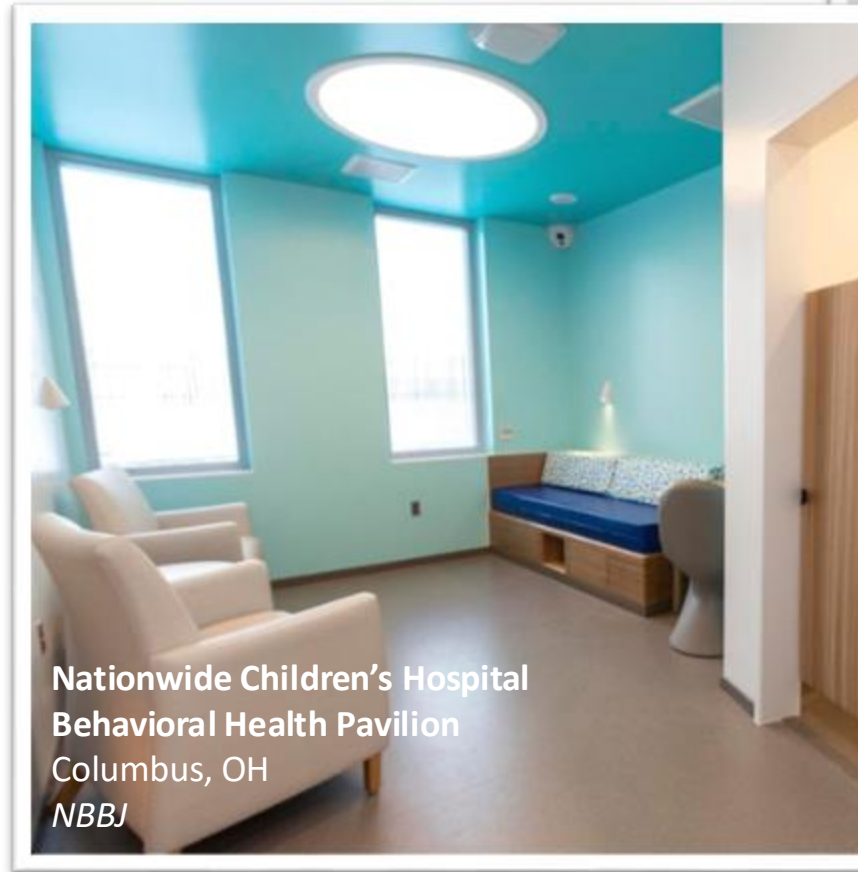


**VA Tampa Mental Health Clinic and Inpatient
Rehab Facility**
Tampa, FL
Leo A Daly

BHFC - Design Guide



Design Guides - FGI



New York State Office of Mental Health



Patient Safety Standards, Materials and Systems Guidelines

Recommended by the
New York State Office of Mental Health

With respect to NYS-OMH operated facilities, these Guidelines apply solely to new construction and major renovation projects. Existing facilities should use these Guidelines as a reference document whenever they make improvements.



Recommendations:

- High efficiency, LED
- Dimmable
- 1/8" thick polycarbonate lens (min)
- Durable housing
- Exposed fasteners
 - Tamper-resistant
 - Finished to match
- Maintenance:
 - Standard replacement parts
 - Minimize the number of security fasteners
- Flush with the substrate, gaps sealed

New York State Office of Mental Health



Typical High-Risk Areas

- Area with solitary and/or unsupervised patient use.

Typical Medium Risk Areas

- Patient access is controlled, or use is supervised with no solitary and/or unsupervised use.

Typical Low Risk Areas

- Staff only areas. No Patient Use.

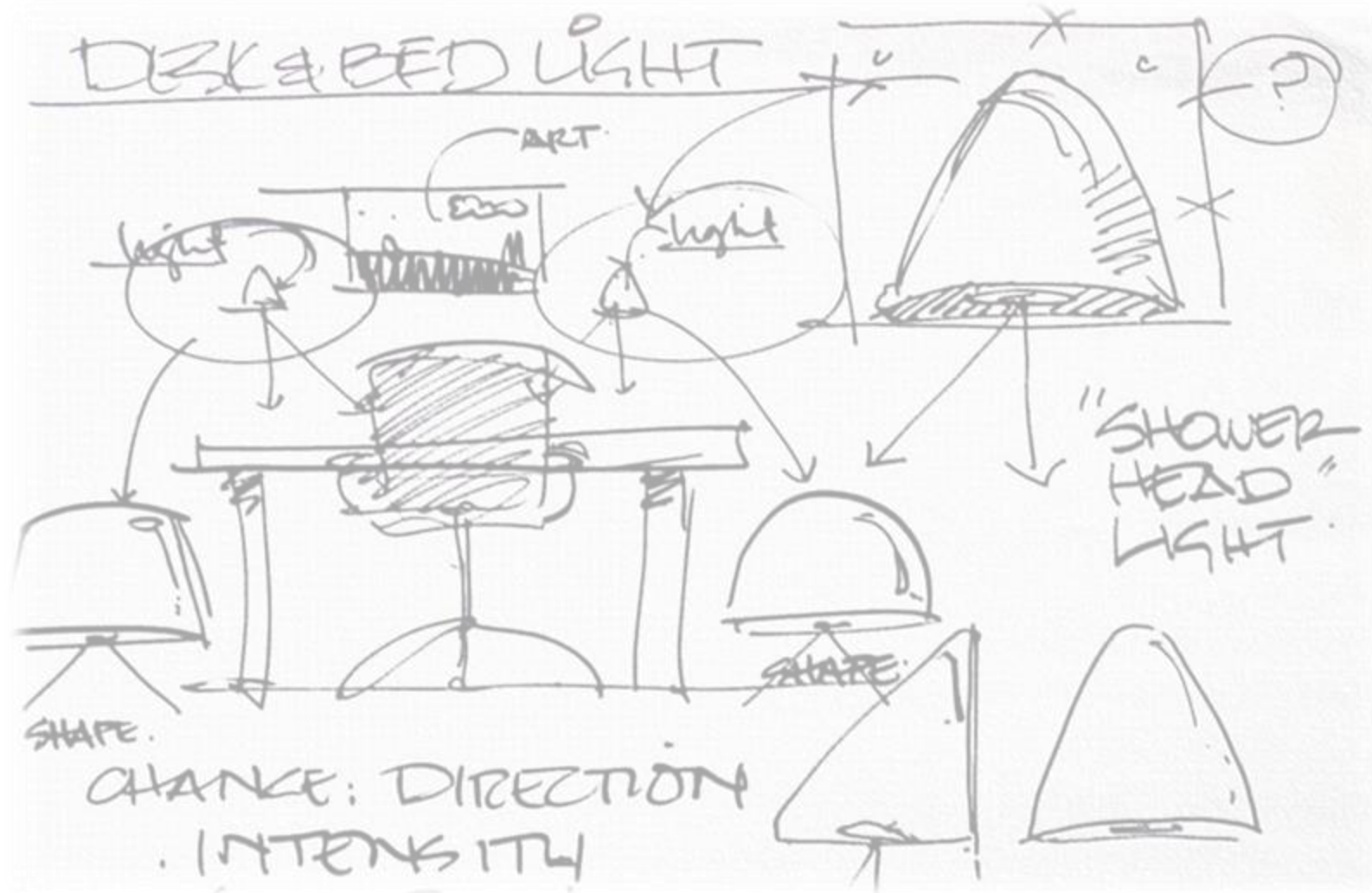
New York State Office of Mental Health

Primary Criteria

- Ligature Resistance: Looping
- Ligature Resistance: Wedging
- Cutting
- Jumping
- Tamper Resistance
- Weaponization
- Contraband Storage
- PICA/Ingestion

Secondary Criteria

- Ligature Resistance: ligature + other objects
- Ligature Resistance: product installation
- Codes & Regulations
- Therapeutic Environment & Appearance
- Constructability
- Durability
- Maintenance Points



Luminaire Design

- Impact Resistance
- Tamper Resistance
- Ligature Resistance
- Materials

Impact Resistance



Impact Resistance – IK Ratings

IK ratings are defined as IKXX, where “XX” is a number from 0 to 10+ indicating the degrees of protection provided by electrical enclosures, including luminaires, against external mechanical impacts. The IK rating scale identifies the ability of an enclosure to resist impact energy levels measured in joules (J).

IEC 62262 specifies how the enclosure must be mounted for testing, the atmospheric conditions required, the quantity and distribution of the test impacts, and the impact hammer to be used for each level.

IK Code	Impact Size Protected Against (joules)	Description
IK0	-	No protection against any mechanical impact
IK1	0.15	Protection against a 200g object dropped from 7.5cm
IK2	0.2	Protection against a 200g object dropped from 10cm
IK3	0.35	Protection against a 200g object dropped from 17.5cm
IK4	0.5	Protection against a 200g object dropped from 25cm
IK5	0.7	Protection against a 200g object dropped from 35cm
IK6	1	Protection against a 500g object dropped from 20cm
IK7	2	Protection against a 500g object dropped from 40cm
IK8	5	Protection against a 1.7Kg object dropped from 29.5cm
IK9	10	Protection against a 5Kg object dropped from 20cm
IK10	20	Protection against a 5Kg object dropped from 40cm
IK10+	40	Protection against a 10Kg object dropped from 40cm

Tamper Resistance



Ligature Resistance

Ligature: Points where a cord, rope, or bed sheet can be looped or tied to a fixture, which may result in self-harm or loss of life



Materials

Clear Polycarbonate



Pick-resistant caulk



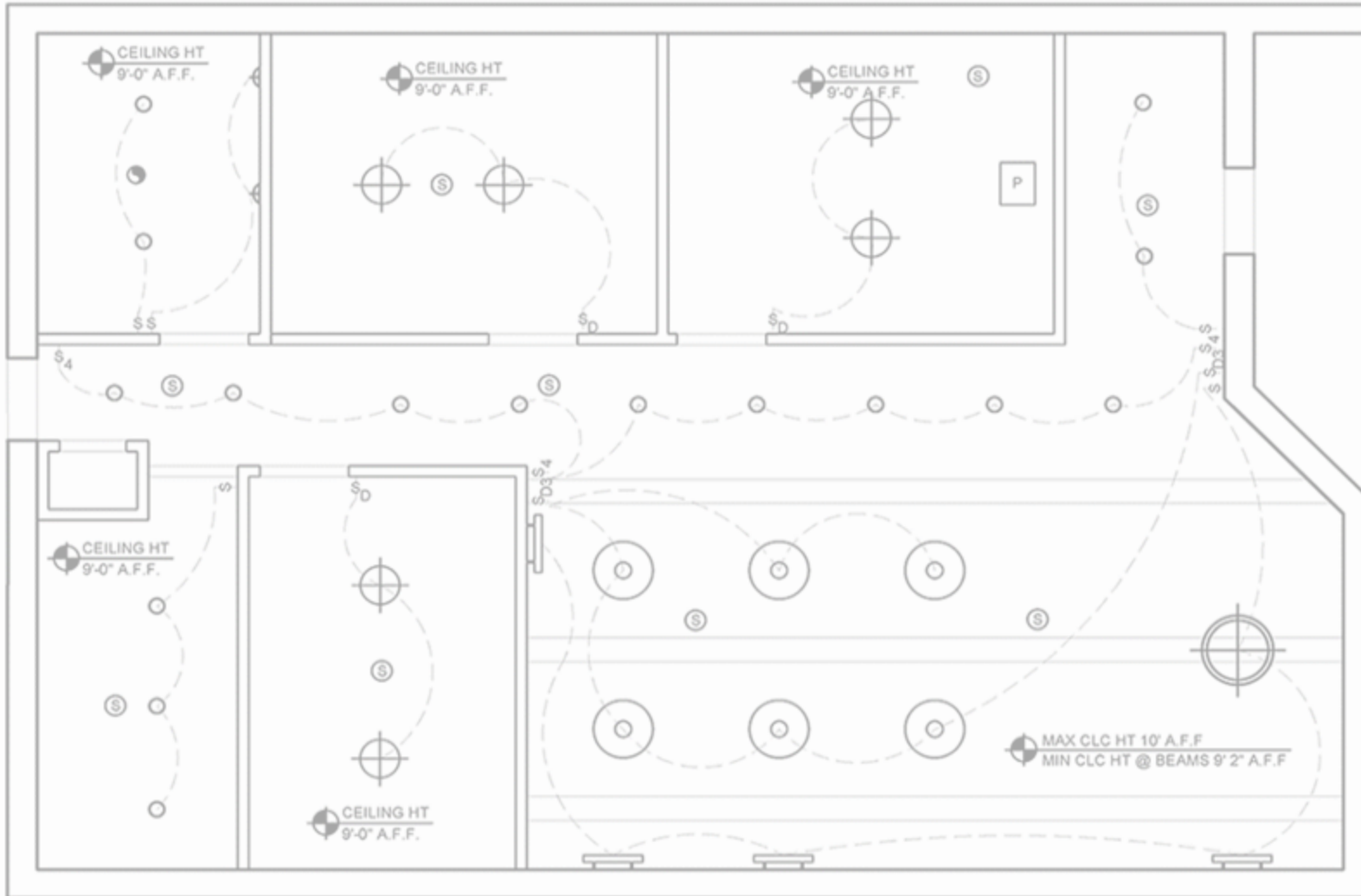
Tamper-resistant screws



Materials & Finishes



Lighting Design



Where to begin?

- Guidelines
- Environmental Safety
- Circadian Lighting
- Night Lights



Rogers Behavioral Health – West Allis
Oconomowoc, WI
Ring&DuChateau Consulting Engineers

Lighting Design

Guidelines...

- Access to daylight, nature/views
- Homelike, non-institutional feel
- Tranquility
- Privacy and autonomy
- Access to controls
- Exterior lighting

Lighting Design and Environmental Standards

Level I: Patients not allowed – staff areas

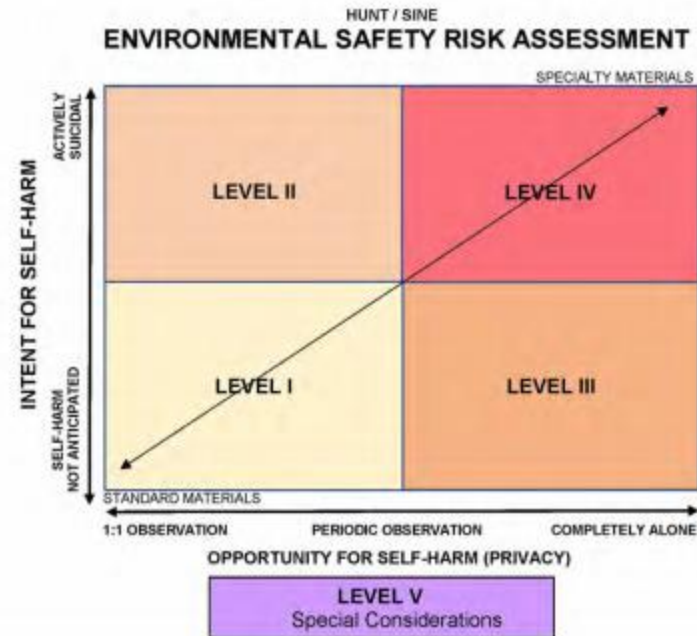
Level II: Areas behind self-closing and self-locking doors - patients highly supervised and not left alone

Level III: Not behind self-locking and self-locking doors - patients may spend time with minimal supervision

Level IV: Patients spend a great deal of time alone

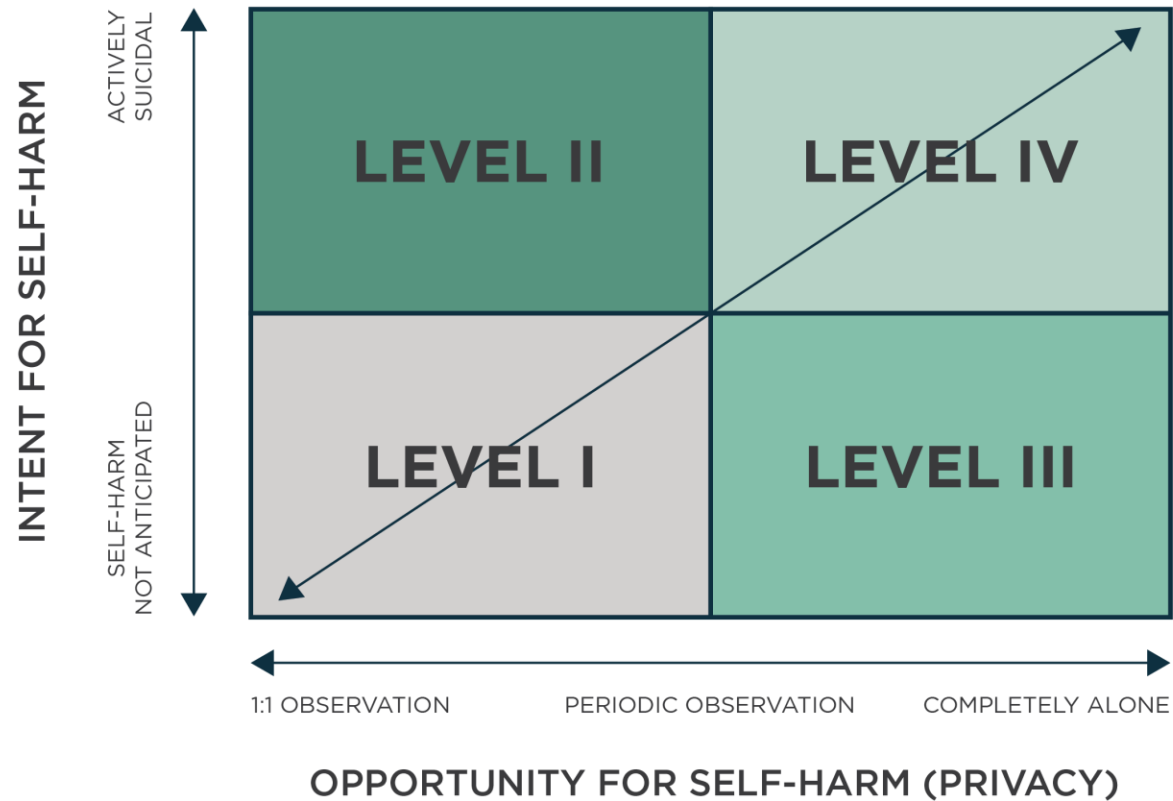
Level V: Special

Environmental Risk Assessment



Lighting Design Standards

ENVIRONMENTAL SAFETY RISK ASSESSMENT



Environmental Safety Risk Assessment

Level I – Patients not allowed
Staff-only meeting rooms, supply closets

Level II – Patients highly supervised
Activity rooms, group rooms, corridors

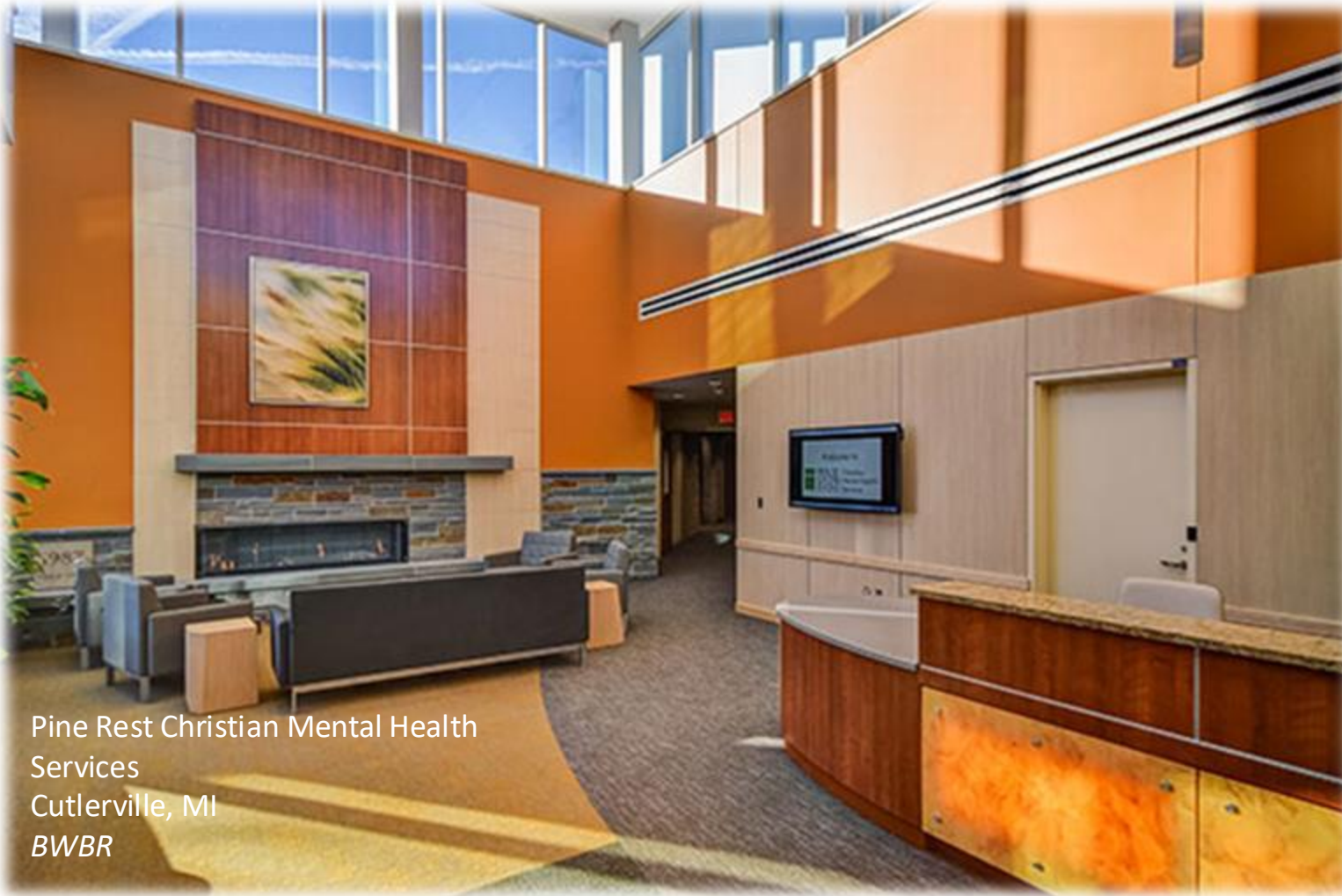
Level III – Minimal supervision
Day-rooms, lounges, open nurse stations

Level IV – Patients often alone
Patient rooms, patient bathrooms

Level V (outside the matrix) Admission
rooms, seclusion rooms, exam rooms

Environmental Safety Risk Assessment





Pine Rest Christian Mental Health
Services
Cutlerville, MI
BWBR

Lighting Design

Welcoming...

- Access to daylight
- Nature/views
- Homelike
- Non-institutional feel



Pine Rest Christian Mental Health
Services
Cutlerville, MI
BWBR

Lighting Design

Welcoming...

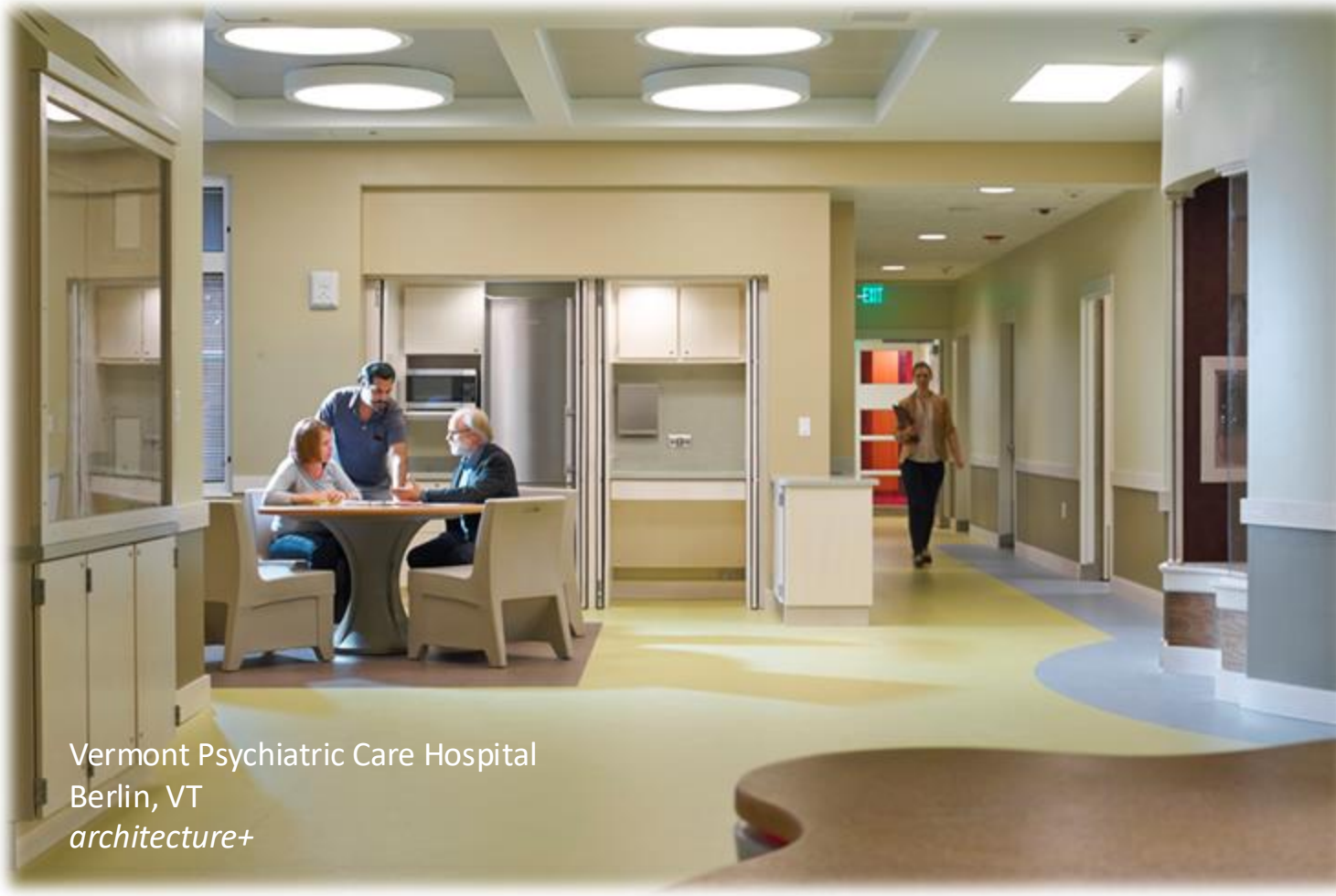
- Access to daylight
- Nature/views
- Homelike
- Non-institutional feel



Lighting Design

Variable Light Levels...

- Circadian Lighting
- Non-institutional feel



Vermont Psychiatric Care Hospital
Berlin, VT
architecture+

Light Levels According to Zone



Patient Room

- General – 5FC
- Bathroom – 30FC
- Reading – 20FC



Light Levels According to Zone



Patient Room

- General – 5FC
- Desk – 40FC
- Vanity – 30FC
- Reading – 20FC

Light Levels According to Zone

Group Therapy / Education

- General – 20FC
- Table Lighting – 50FC



Light Levels According to Zone



Halls & Corridors

- General – 5FC

Nurses Station

- General – 30FC
- Task – 50FC

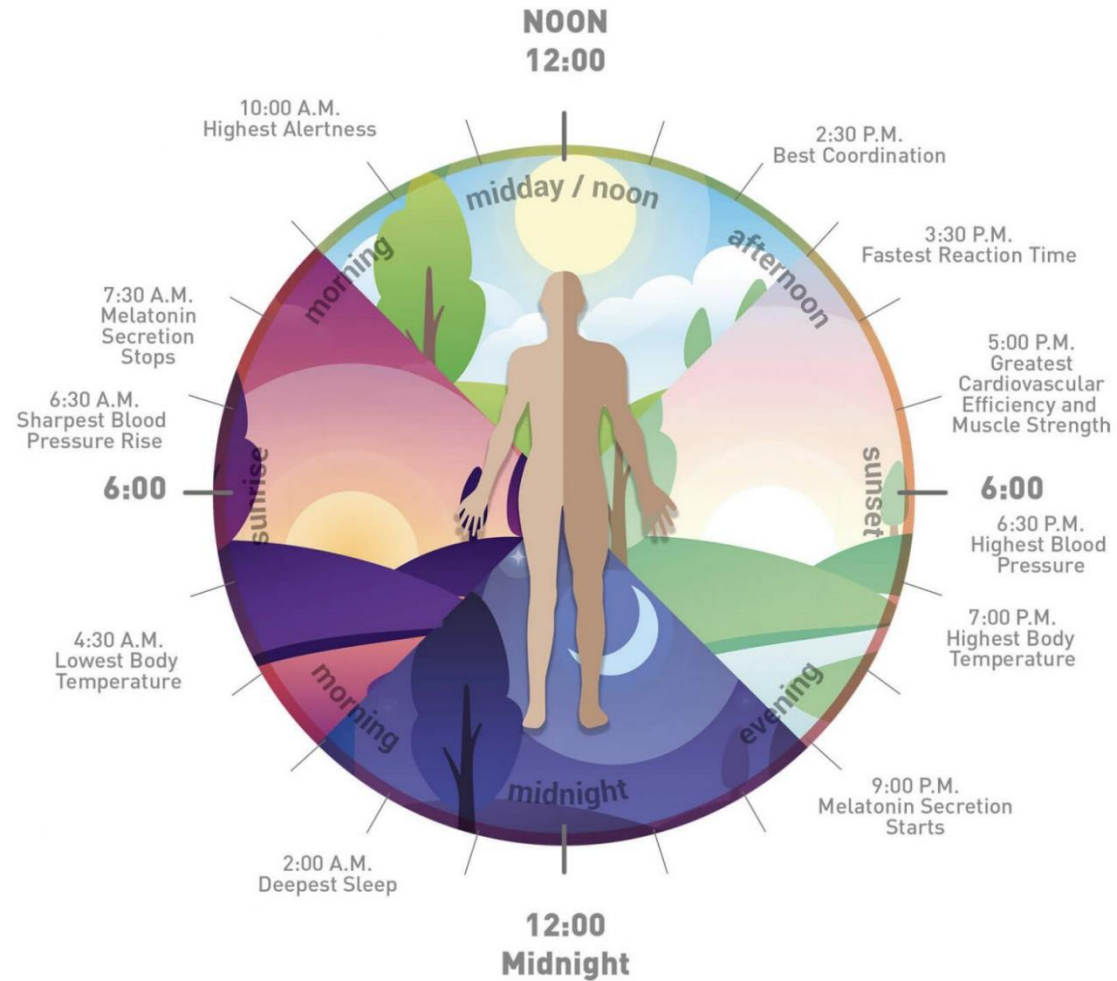
Dayrooms

- General – 30FC
- Task – 50FC

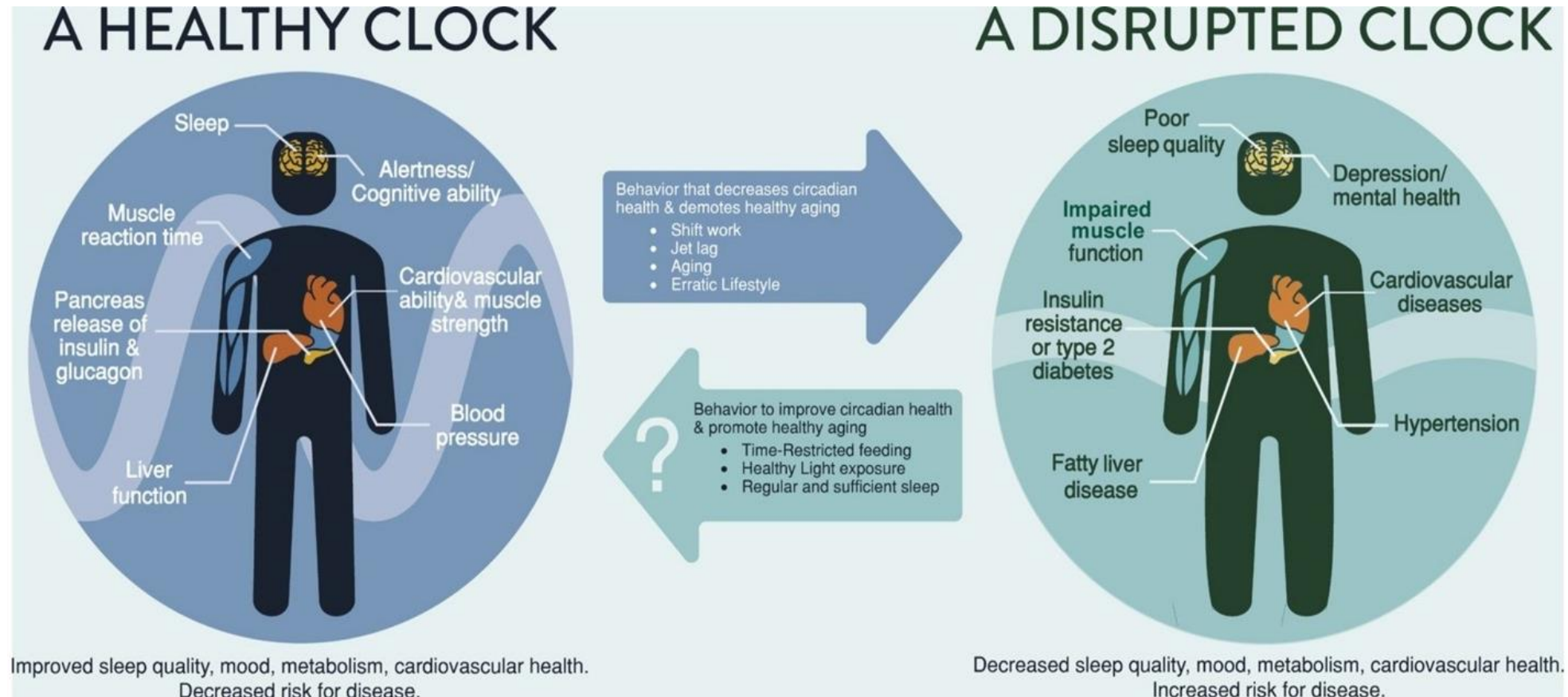
Circadian Lighting



Circadian Rhythm & Human Biology



Sleep, Circadian Rhythm & Mental Health



Circadian Lighting



Swedish Medical Center-Ballard,
Behavioral Health Unit
Seattle, WA
ZGF

Circadian Lighting



Swedish Medical Center-Ballard,
Behavioral Health Unit
Seattle, WA
ZGF

Circadian Lighting



Swedish Medical Center-Ballard,
Behavioral Health Unit
Seattle, WA
ZGF

Circadian Lighting



Aabenraa Psychiatric Hospital
Psychiatric Department
South Denmark
White Arkitektor

Circadian Lighting



Aabenraa Psychiatric Hospital
Psychiatric Department
South Denmark
White Arkitektur

Patient Outcomes:

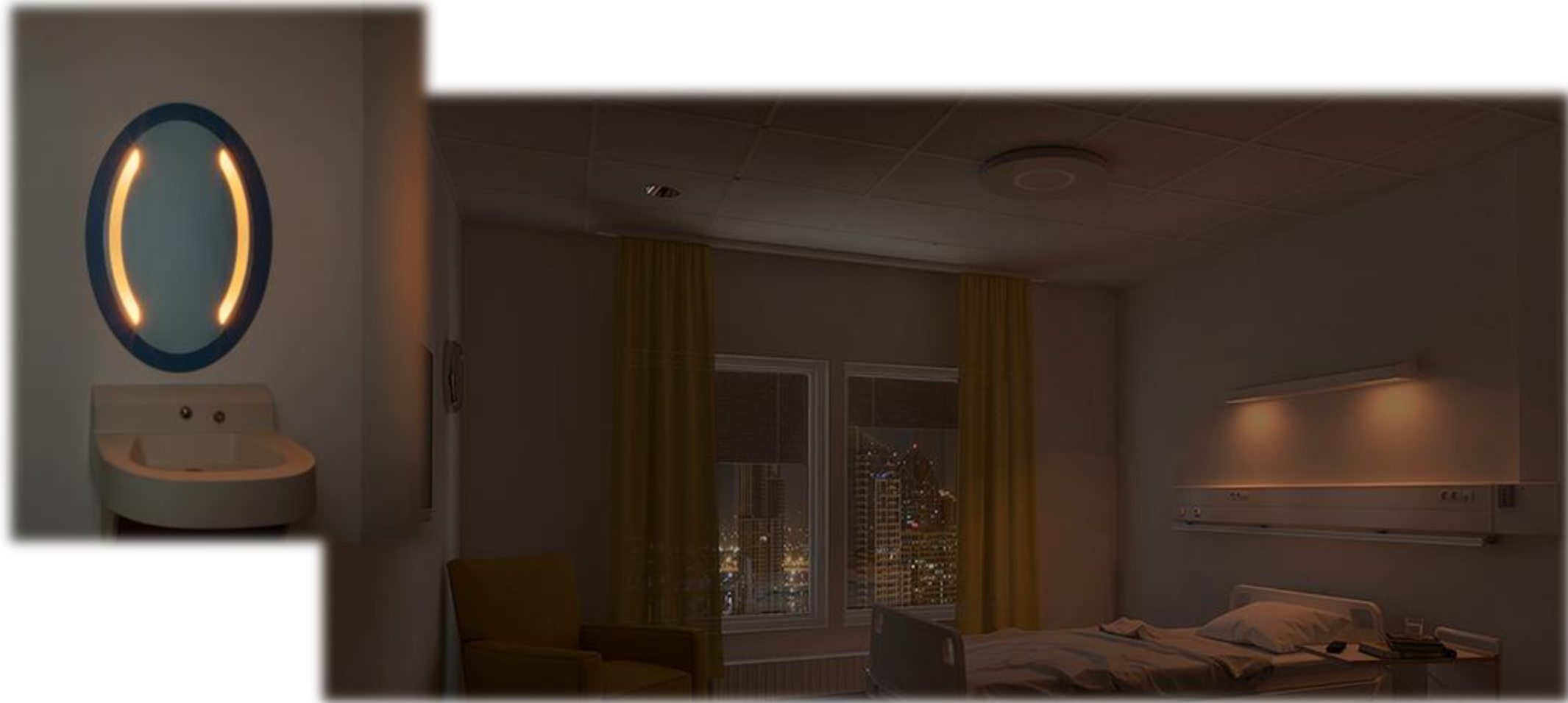
*200 staffers surveyed; 82 responded
65% said patients sleep better
77% said patients are more calm
57% reported fewer night-time disturbances
38% observed a reduction in drug consumption
44% noticed a reduction in physical force required
to handle disturbances*

Staff Outcomes:

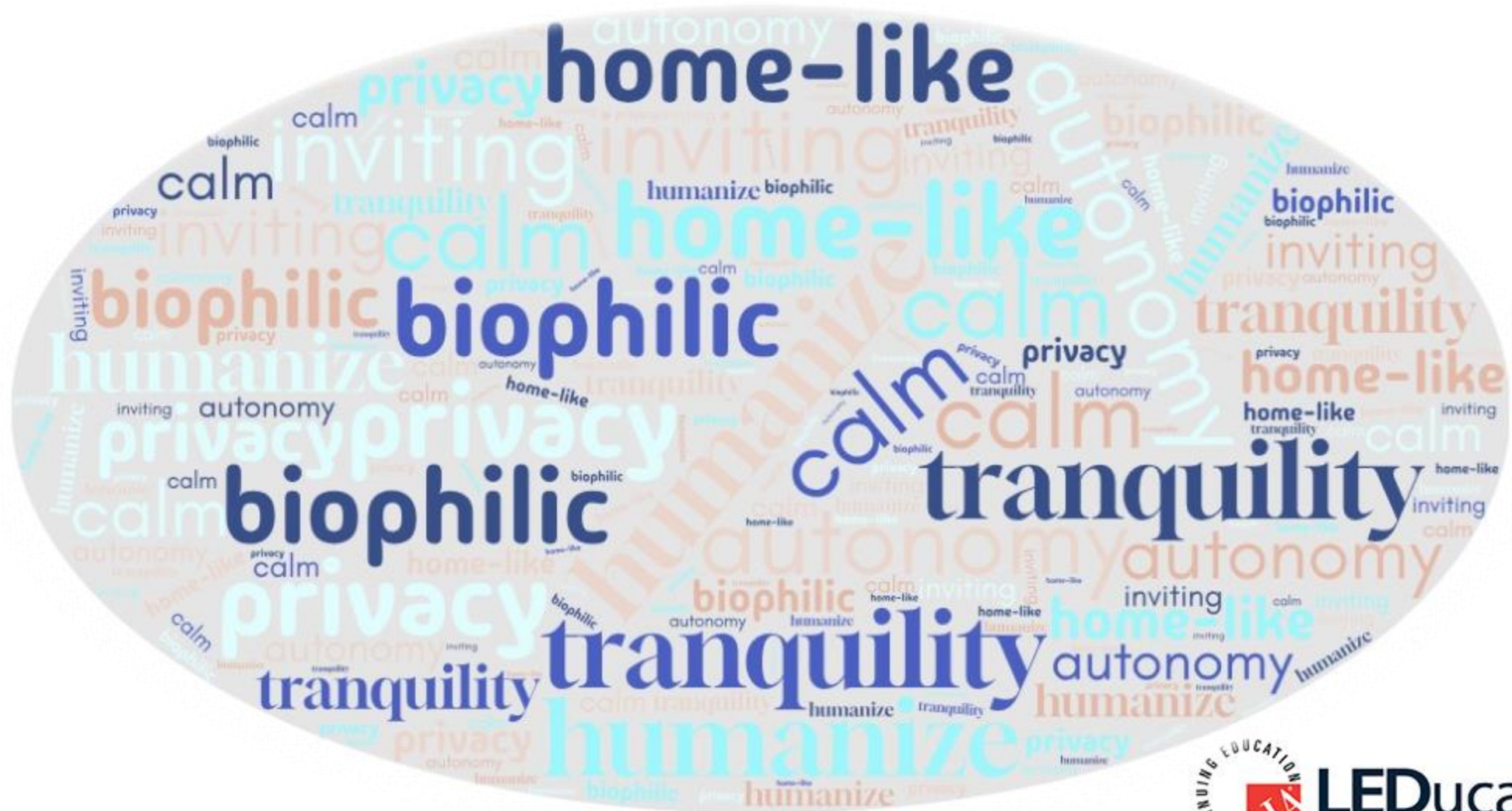
*54% feel more energized
47% said they are sleeping better
77% said they are satisfied with the new lights*



Night Lighting



What does the application of these design principles look like...



Privacy and Autonomy



Vermont Psychiatric Care Hospital
Berlin, VT
architecture+

Calm and Inviting



Children's National Medical Center
Washington DC
Array Architects

Home-Like Design



Tranquility



Eating Recovery Center
Willow
Denver, CO
Boulder Associates

Lessons Learned



- Co-occurrence
- Therapeutic design benefits everyone
- Study the patient population
- Homelike feel, autonomy, control
- Privacy, acoustics, organization, daylight, nature, socializing
- Design Collaboration

References

Guides

Patient Safety Standards, Materials and Systems Guidelines, 32nd Edition. The New York State Office of Mental Health, architecture+. July 31, 2024. https://www.omh.ny.gov/omhweb/patient_safety_standards/

McMurray, Kimberly N.; Hunt, James M.; Sine, David M. - Behavioral Health Design Guide, Behavioral Health Facility Consulting. LLC. January 2022. <https://www.bhfcllc.com/design-guide>

FGI Design of Behavioral Health Crisis Units – June 2022
<https://fgiguidelines.org/resource/design-of-behavioral-health-crisis-units/>

Mental Health Outpatient Services Design Guide. US Department of Veterans Affairs. 2018.
<https://www.cfm.va.gov/til/dGuide/dgMHOP.pdf>

Design Guide for Inpatient MH & Residential Rehabilitation Treatment Program Facilities, January 2021. Department of Veterans Affairs Office of Construction & Facilities Management. Dec 2017.
<https://www.cfm.va.gov/til/dGuide/dgMH.pdf>

Shepley, Mardelle M. and Samira Pasha. Design Research and Behavioral Health Facilities. The Center for Health Design, July 2013.
https://www.healthdesign.org/system/files/chd428_researchreport_behavioralhealth_1013-_final_0.pdf

References

Research and Studies

Card, A., Taylor, E., Piatkowski, M. (2018). Designing for behavioral and mental health: More than just safety. Concord, CA: The Center for Health Design. <https://www.healthdesign.org/insights-solutions/design-behavioral-and-mental-health-more-just-safety>

DiPietro, Barbara. Going Home: The Role of State Mental Health Authorities to Prevent and End Homelessness Among Individuals with Serious Mental Illness. NASMHPD. Aug 2018. <https://www.nasmhpd.org/content/ta-coalition-assessment-working-paper-going-home-role-state-mental-health-authorities>

Gunn, Rose et al. The Journal of the American Board of Family Medicine Sep 2015, 28 (Supplement 1) S52-S62; https://www.jabfm.org/content/28/Supplement_1/S52

Hoar, Eve. Adult Psychiatric Inpatient Capacity Demand Analysis for the State of Vermont. Presentation to the Senate Institutions Committee. The University of Vermont Health Network. March 21, 2019. <https://gmcboard.vermont.gov/sites/gmcb/files/IP%20Psych%20Bed%20Capacity%20VT%20GMCB%2011-26-18%20%281%29.pdf>

References

Research and Studies, cont.

Karlin, B.E., Zeiss, R.A.: Best practices: environmental and therapeutic issues in psychiatric hospital design: toward best practices. *Psychiatric Services*. 57(10), 1376–1378 (2006) <https://doi.org/10.1176/ps.2006.57.10.1376>

Platt, L. S., Bosch, S. J. and Kim, D. (2017), Toward a Framework for Designing Person-Centered Mental Health Interiors for Veterans. *Journal of Interior Design*, 42: 27-48. <https://doi.org/10.1111/joid.12095>

R. Ulrich, L. Bogren, S.K. Gardiner, S. Lundin. Psychiatric ward design can reduce aggressive behavior. *Journal of Environmental Psychology*, 57 (2018), pp. 53-66. <https://doi.org/10.1016/j.jenvp.2018.05.002>

Shepley MM, Watson A, Pitts F, et al. Mental and behavioral health settings: Importance & effectiveness of environmental qualities & features as perceived by staff. *Journal of Environmental Psychology*. 2017; 50:37–50. <https://www.healthdesign.org/knowledge-repository/mental-and-behavioral-health-settings-importance-effectiveness-environmental>

References

Research and Studies, cont.

Shepley MM et al. Mental and Behavioral Health Environments: Measurement of Building Performance. *AAH*. 2016
<https://healthdesign.org/knowledge-repository/mental-and-behavioral-health-environments-measurement-building-performance>

Sommer, R., & Ross, H. (1958). Social Interaction On a Geriatrics Ward. *International Journal of Social Psychiatry*, 4(2), 128–133. <https://doi.org/10.1177/002076405800400207>

Substance Abuse and Mental Health Services Administration. (2019). *Key substance use and mental health indicators in the United States: Results from the 2018 National Survey on Drug Use and Health* (HHS Publication No. PEP19–5068, NSDUH Series H–54). Rockville, MD: Center for Behavioral Health Statistics and Quality, Substance Abuse and Mental Health Services Administration. <https://www.samhsa.gov/data/>

Ulrich, R. S., Bogren, L., & Lundin, S. (2012). Towards a design theory for reducing aggression in psychiatric facilities. In *ARCH 12: ARCHITECTURE / RESEARCH / CARE / HEALTH*. Chalmers Institute of Technology. [Access](#).

References

Stats and Overviews

<https://www.healthdesign.org/behavioral-mental-health-toolbox>

<https://www.northtexashelp.com/mental-health-treatment-settings.html>

<https://www.inspiremalibu.com/blog/recovery/difference-between-iop-and-php-outpatient-programs/>

<https://www.nih.gov/about-nih/what-we-do/nih-almanac/national-institute-mental-health-nimh>

<https://www.hfmmagazine.com/articles/3673-devices-and-furnishings-to-reduce-ligature-danger>

<https://www.healthdesign.org/insights-solutions/lessons-learned-about-behavioral-and-mental-health>

<https://www.mhanational.org/issues/state-mental-health-america>

References

Projects and Photos

<https://www.hfmmagazine.com/articles/3231-design-framework-created-for-va-mental-health-centers>
<https://www.bdcnetwork.com/child-specific-mental-health-center-features-design-elements-support-healing>
http://www.aplususa.com/Portfolio/ProjectDetail.aspx?project=Vermont_Psychiatric_Care_Hospital
<https://www.nkarchitects.com/news/a-new-era-dawns-in-behavioral-health-design>
<https://rogersbh.org/locations/oconomowoc>
<https://www.healthcaredesignmagazine.com/projects/behavioral-health/photo-tour-pine-rest-christian-mental-health-services/>
https://www.normantranscript.com/news/local_news/patients-speak-out-on-griffin-memorial-hospital/article_e95029f2-1bd4-5ac3-970b-444da8e3477c.html
<https://www.stuff.co.nz/national/health/92634306/behind-locked-doors-inside-wellingtons-forensic-mental-health-units>
<https://array-architects.com/projects/pediatric-behavioral-health/>
<https://www.metropolismag.com/architecture/healthcare-architecture/behavioral-healthcare-cannon-design/pic/48713/>

Other

Liddicoat, S. Mental health facility codesign: A new research method for integrating the service user voice in design processes using virtual reality. *General Psychiatry* 2019;32:e100061. <http://dx.doi.org/10.1136/gpsych-2019-100061>
<https://www.pewtrusts.org/en/research-and-analysis/blogs/stateline/2016/08/02/amid-shortage-of-psychiatric-beds-mentally-ill-face-long-waits-for-treatment>
<https://www.modernhealthcare.com/opinion-editorial/addressing-mental-healthcare-gap-our-rural-communities-schools>
<https://www.npr.org/2017/11/30/567477160/how-the-loss-of-u-s-psychiatric-hospitals-led-to-a-mental-health-crisis>
<https://riahealth.com/2021/06/29/dual-diagnosis-co-occurring-disorders-comorbidity-whats-the-difference/>

This concludes The American Institute of Architects Continuing
Education Systems Course

Thank you for attending!

Please scan the QR code to rate it and leave feedback.



Sutton North Room

LEDucation Presentation Committee

Wendy Kaplan, Kelvix | Craig Fox, ETC | Shaun Fillion, NYSID / RAB | Stacey Bello, KGM Lighting



LEDucation.org