

Designers Lighting Forum

## **The Lighting Evolution of the Veterans Room At The Park Avenue Armory**

Kirsten Reoch, Director of Capital Planning, Preservation and Institutional Relations, Park Avenue Armory

Marija Brdarski, Senior Architect, Herzog & de Meuron

Paul Marantz, Founder / Consulting Design Principal, Fisher Marantz Stone

Dawn Ladd, Founder, and Principal, Aurora Lampworks

Carla Ross Allen, Senior Associate at Fisher Marantz Stone

March 7, 2023



Credit(s) earned on completion of this course will be reported to **AIA CES** for AIA members. Certificates of Completion for both AIA members and non-AIA members are available upon request.

This course is registered with **AIA CES** for continuing professional education. As such, it does not include content that may be deemed or construed to be an approval or endorsement by the AIA of any

material of construction or any method or manner of handling, using, distributing, or dealing in any material or product.

---

Questions related to specific materials, methods, and services will be addressed at the conclusion of this presentation.



# Learning Objectives

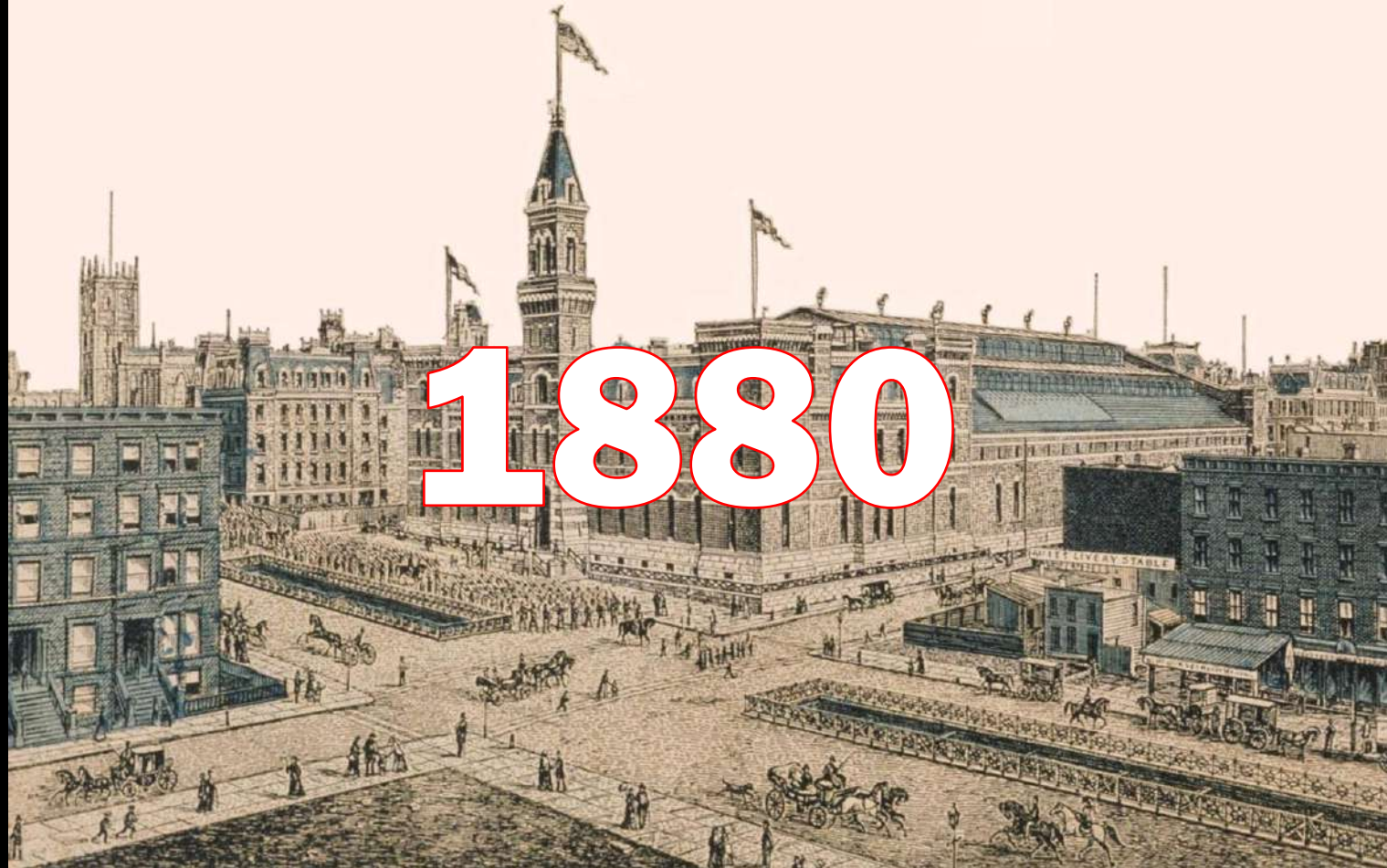
---

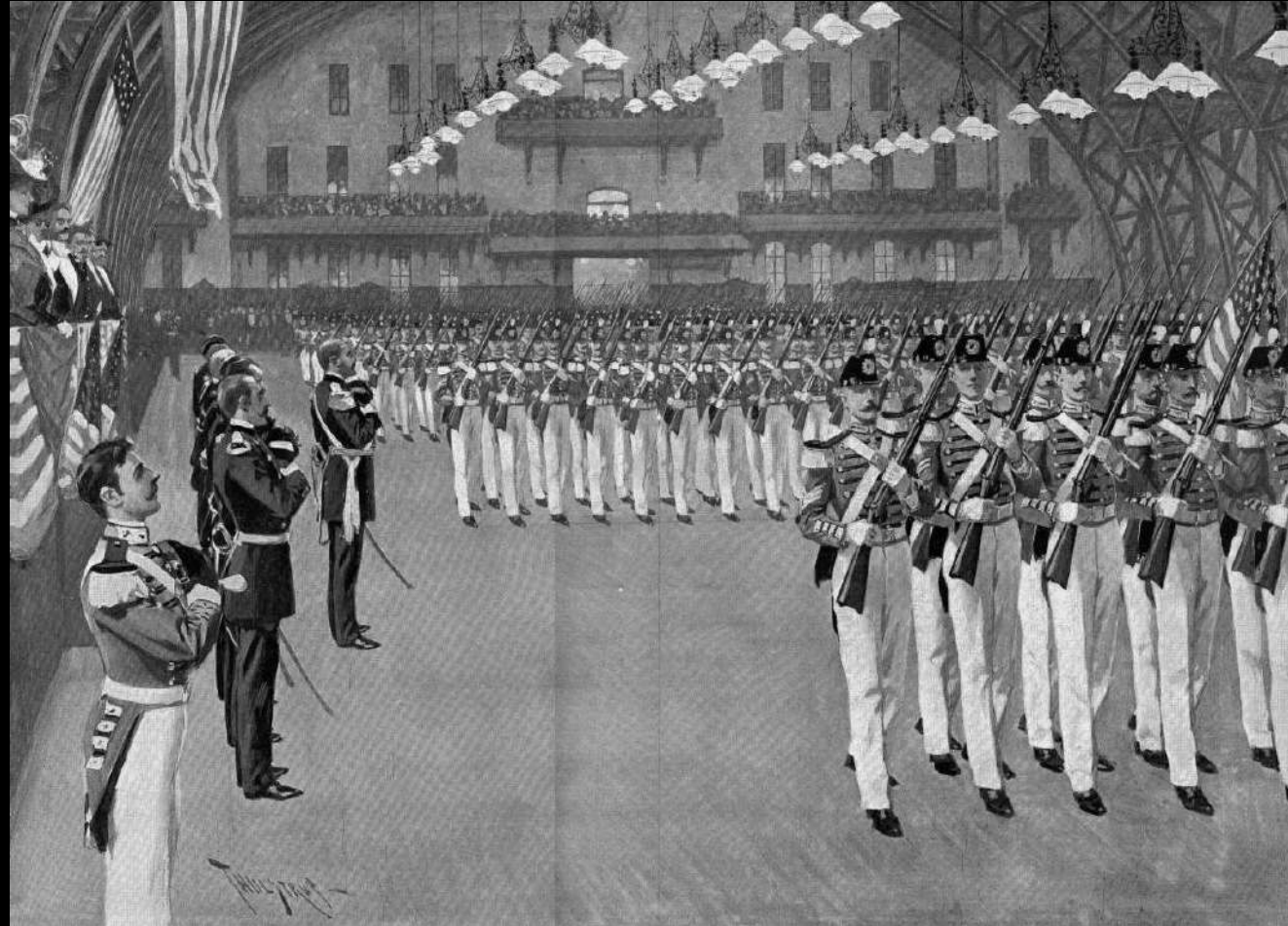
At the end of this course, participants will have had the opportunity:

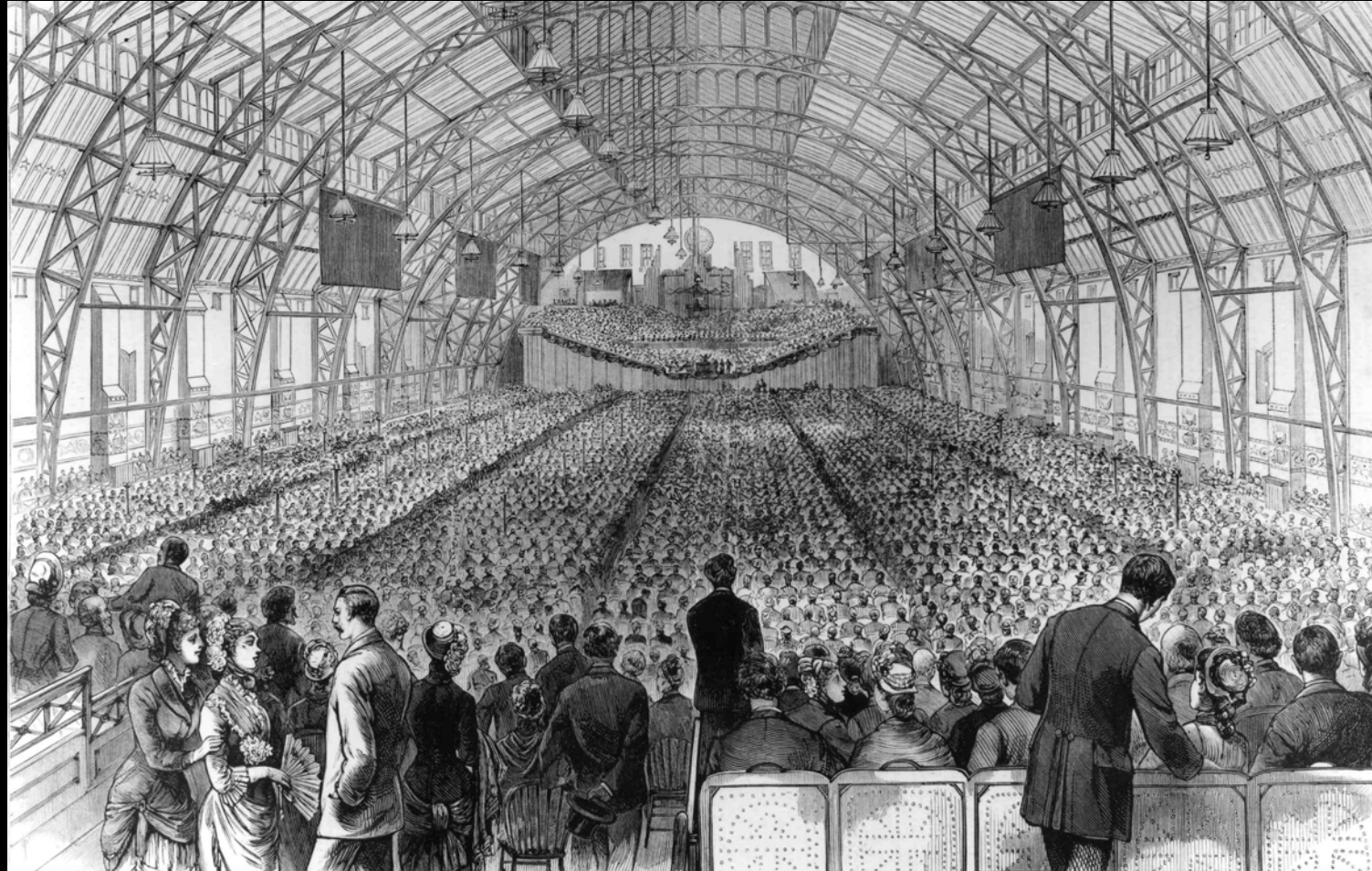
1. To learn the historical context of the Park Avenue Armory and how it relates to the invention of electric light.
2. To learn about the cultural and technological evolution of the Veterans Room at the Park Avenue Armory through the lens of its lighting fixtures.
3. To get a glimpse into the collaborative process between Architect, Lighting Designer, and Restorer.
4. To understand how the fixtures were restored both with respect for their historical nature and with consideration for the contemporary use of the space.
5. Through actual working fixtures, attendees will be able to compare gas lighting, incandescent lighting, and the integrated LED solution that was implemented at the Armory.

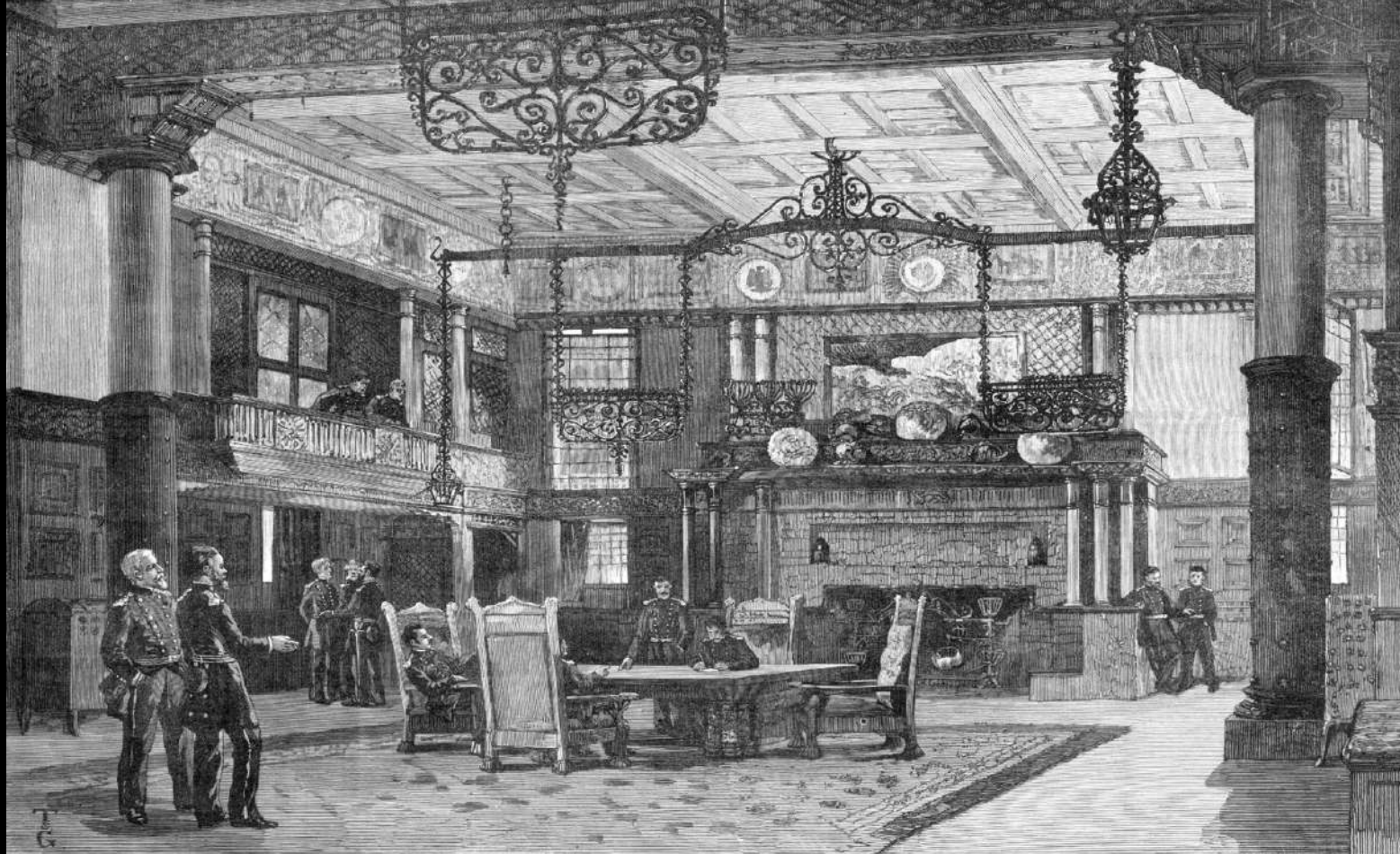




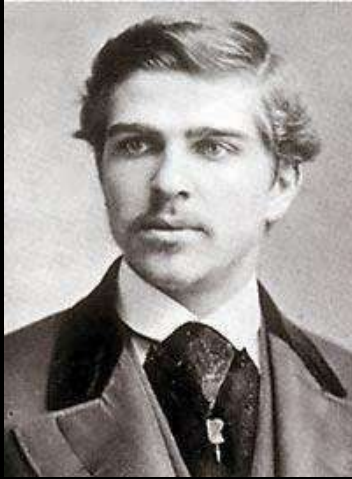












**Louis Comfort Tiffany**  
Master Designer



**Samuel Colman**  
Painting and Color

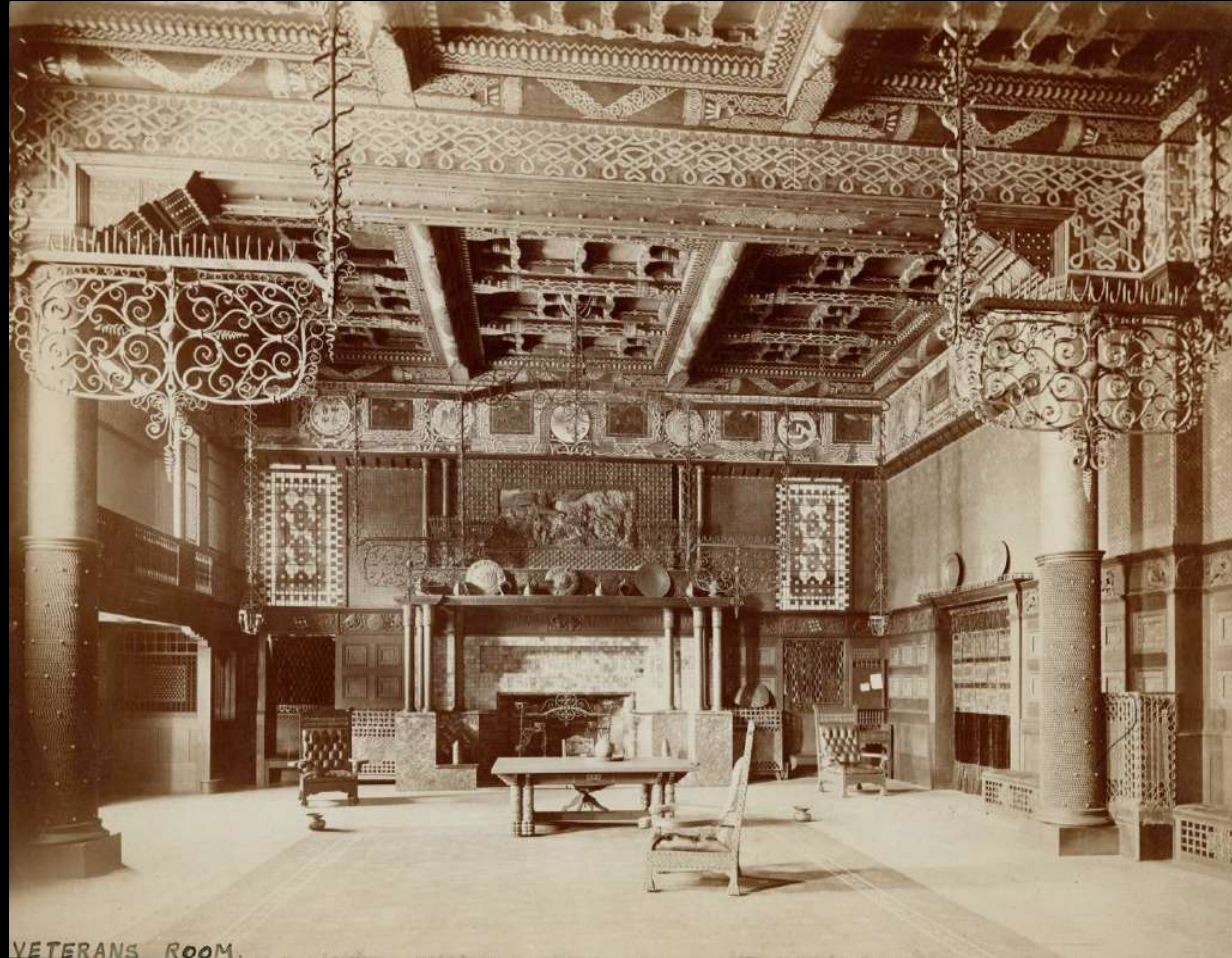


**Candace Wheeler**  
Textiles



**Stanford White**  
Woodwork





VETERANS ROOM.



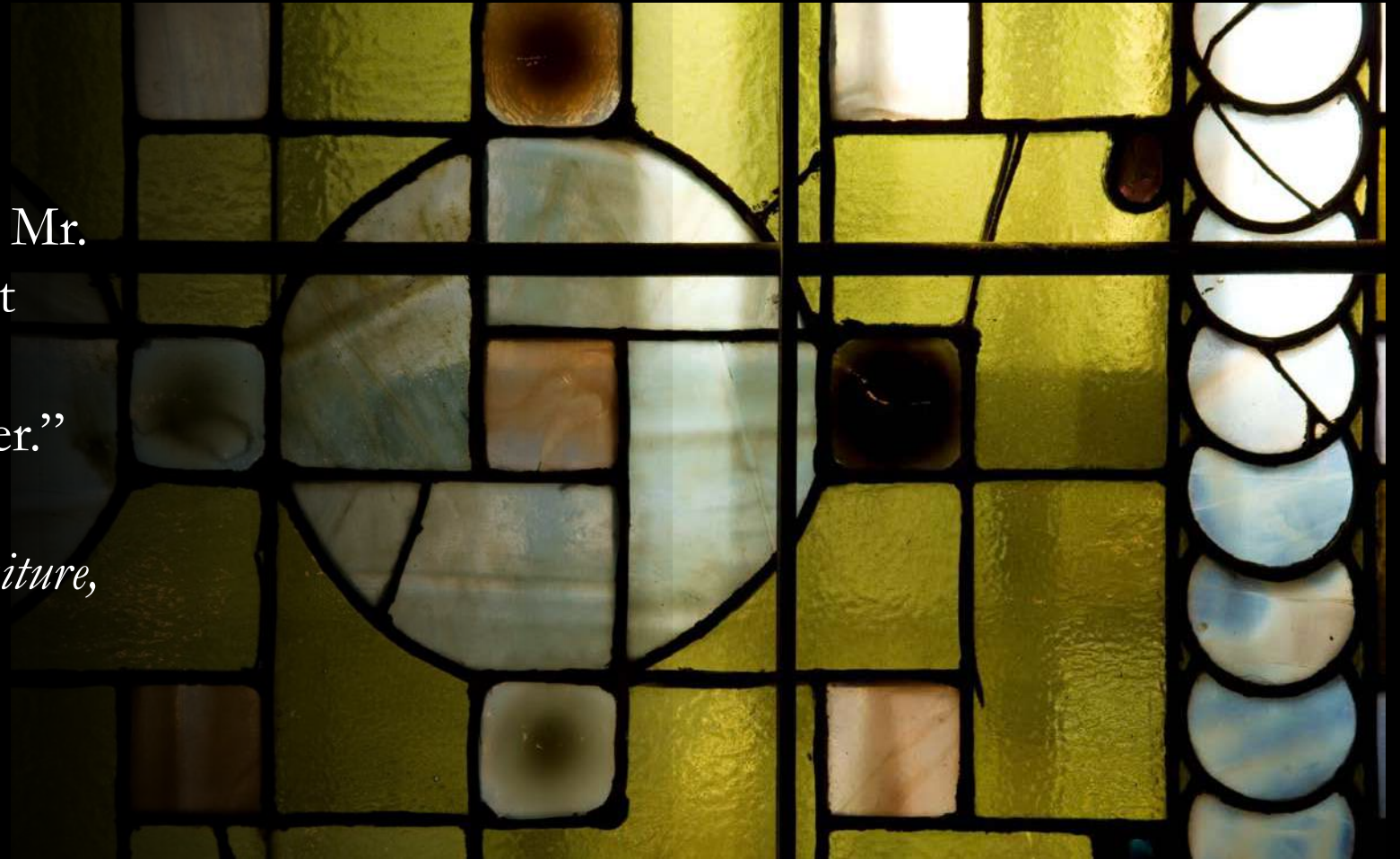
“...**unique** in its appointments and decorations, and **undoubtedly** the **most magnificent** apartment of the kind in this country...”

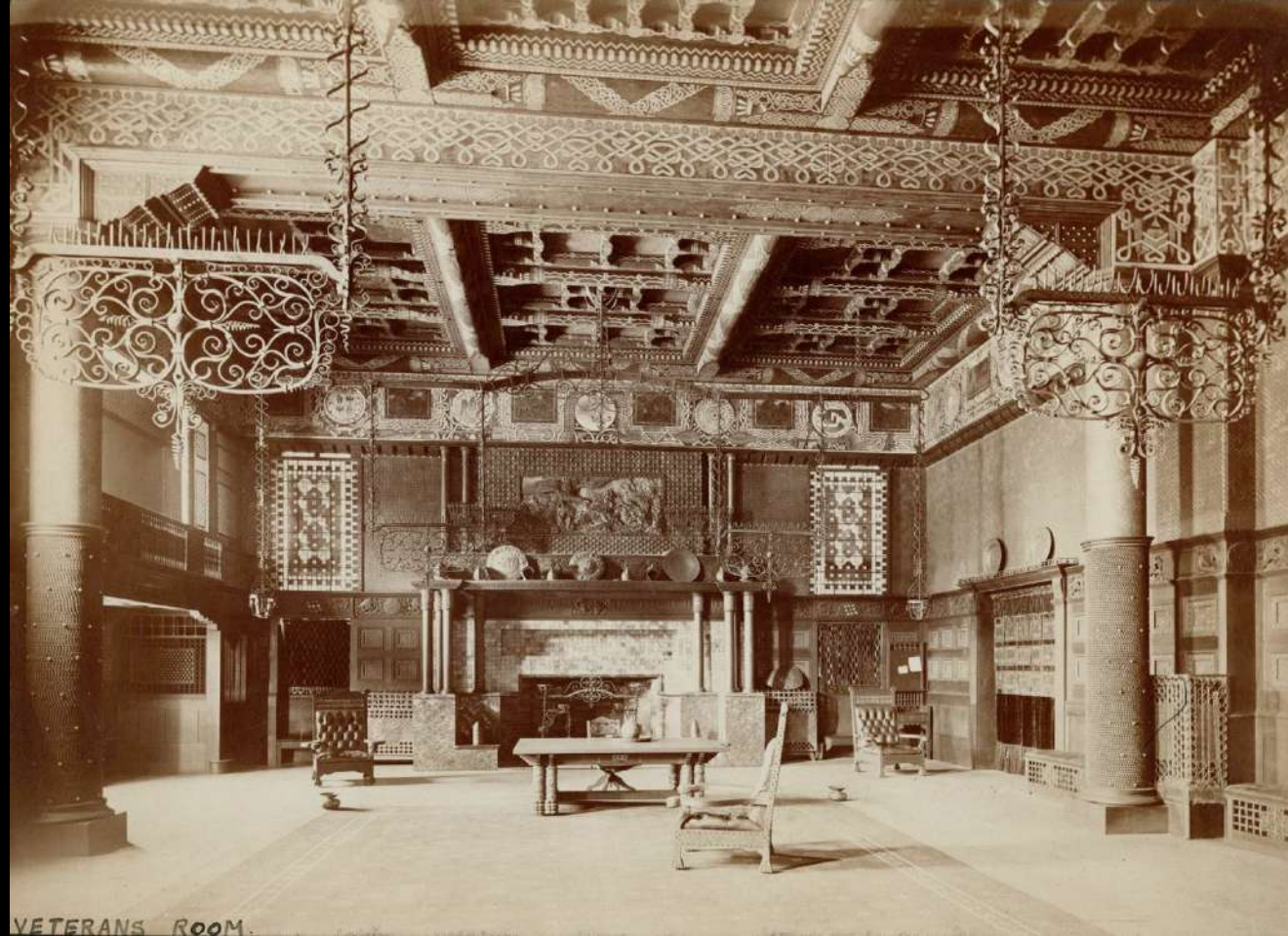
—*The New York Times*, 1881



“this is the work of Mr.  
Tiffany in [his] most  
**ingenious** and  
**picturesque** manner.”

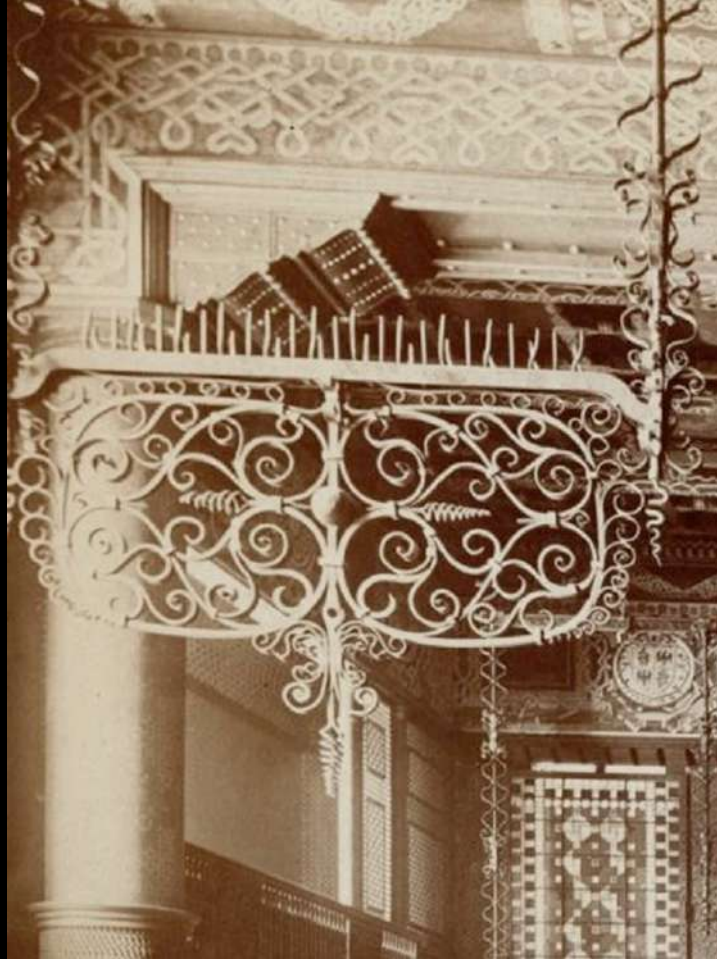
- *Decoration and Furniture,*  
1881

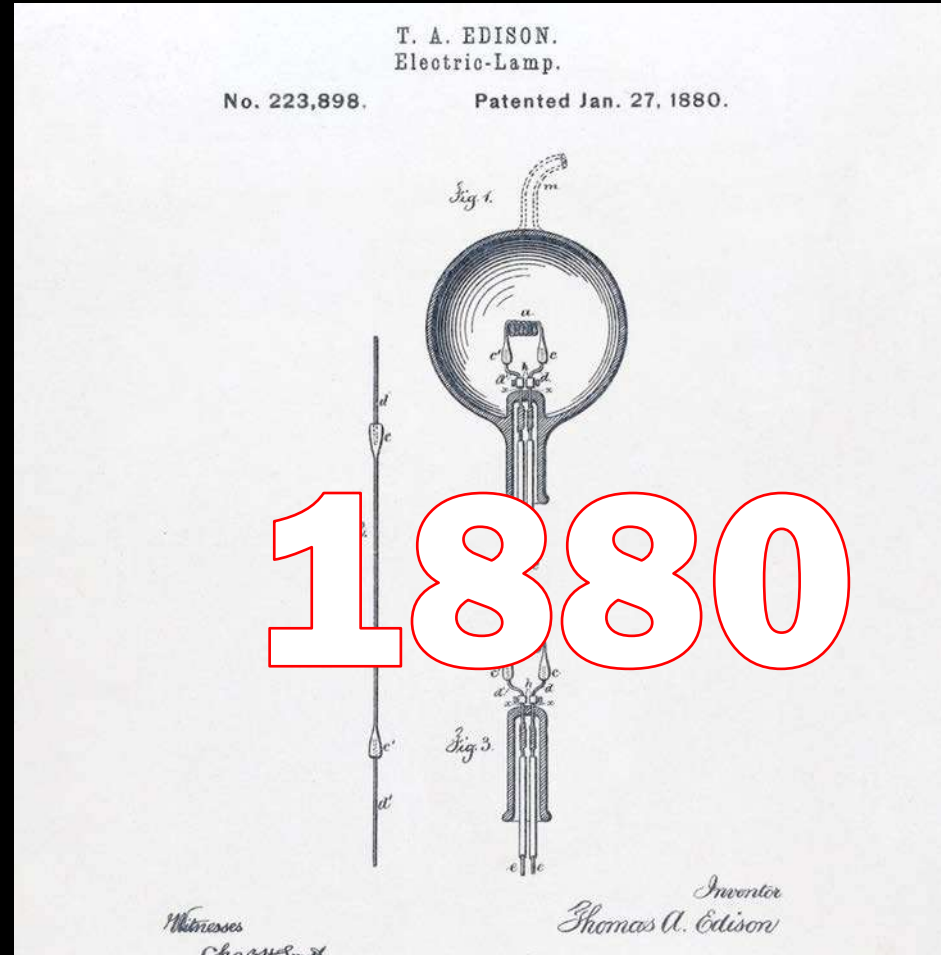




VETERANS ROOM.









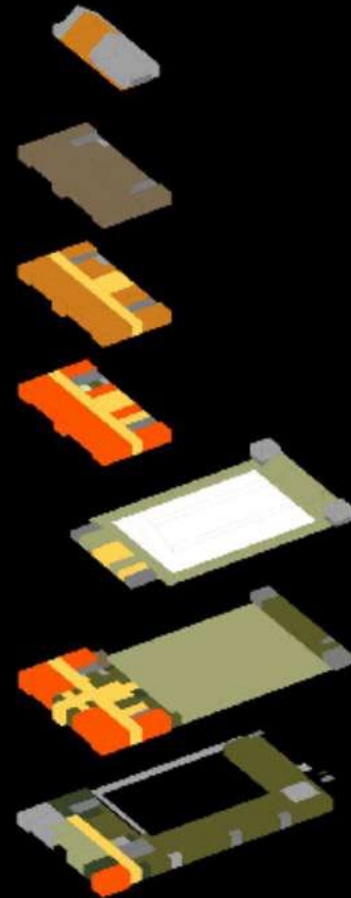
**1897**











**FIFTH FLOOR**  
REHEARSAL SPACE

**FOURTH FLOOR**  
SHELTER

**THIRD FLOOR**  
PARK AVENUE ARMORY OFFICES

**SECOND FLOOR**  
HISTORIC INTERIORS /  
PRESENTATION SPACES

**MEZZANINE**  
DRILL HALL EXTENSION  
FRONT OF HOUSE

**FIRST FLOOR**  
HISTORIC INTERIORS /  
PRESENTATION SPACES  
DRILL HALL  
FRONT OF HOUSE

**BASEMENT FLOOR**  
PERFORMANCE SUPPORT  
FRONT OF HOUSE



First Project – The Drill Hall





Early Programming - The Drill Hall





Armory Site & Plans – Cross Section





Diversity of Rooms





Board of Officers Room







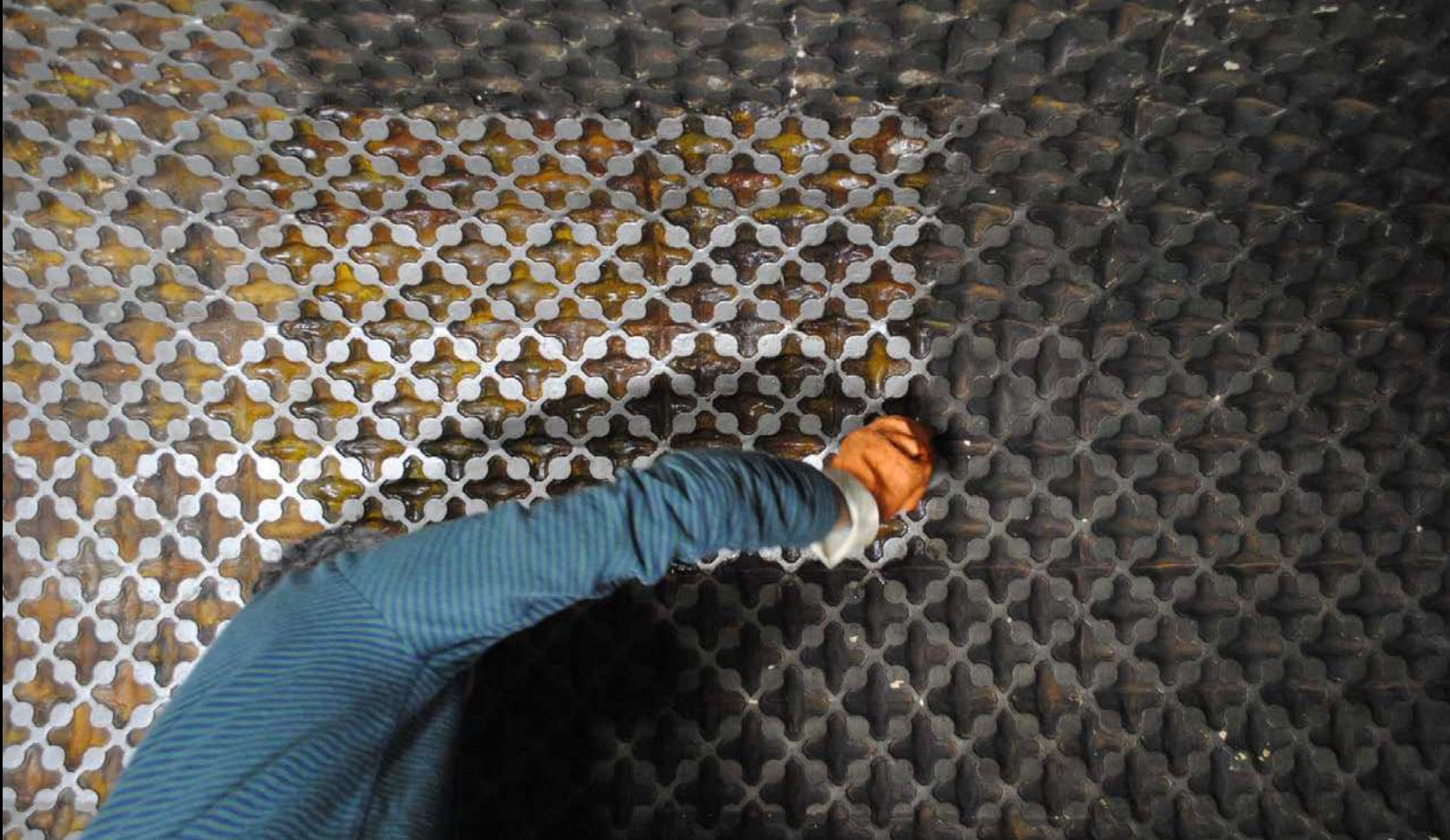
Board of Officers Room















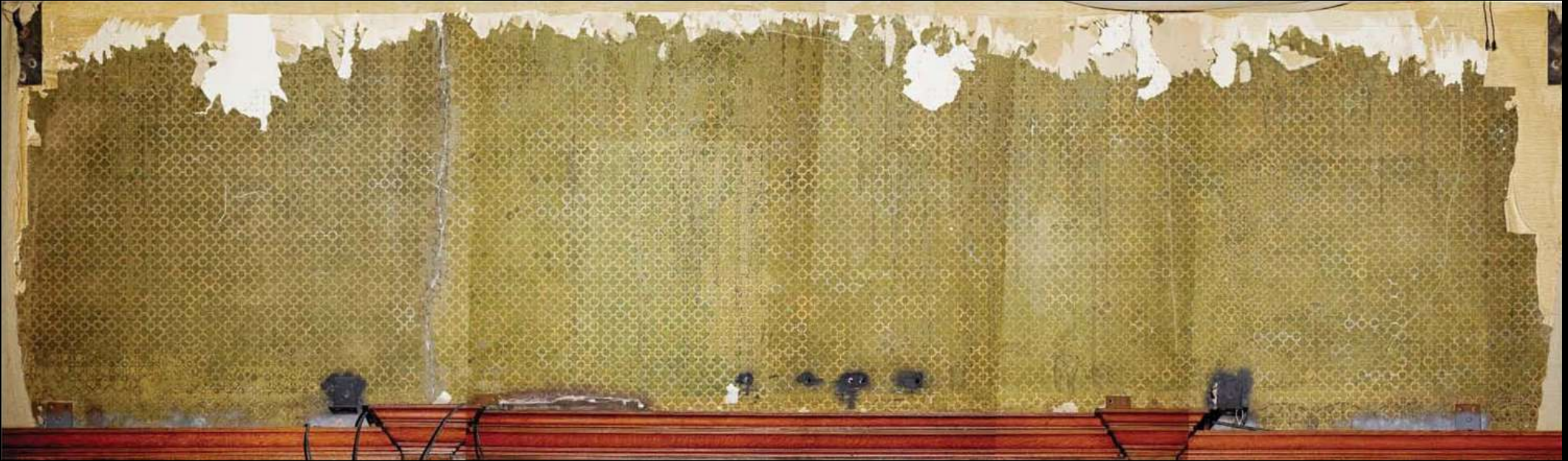


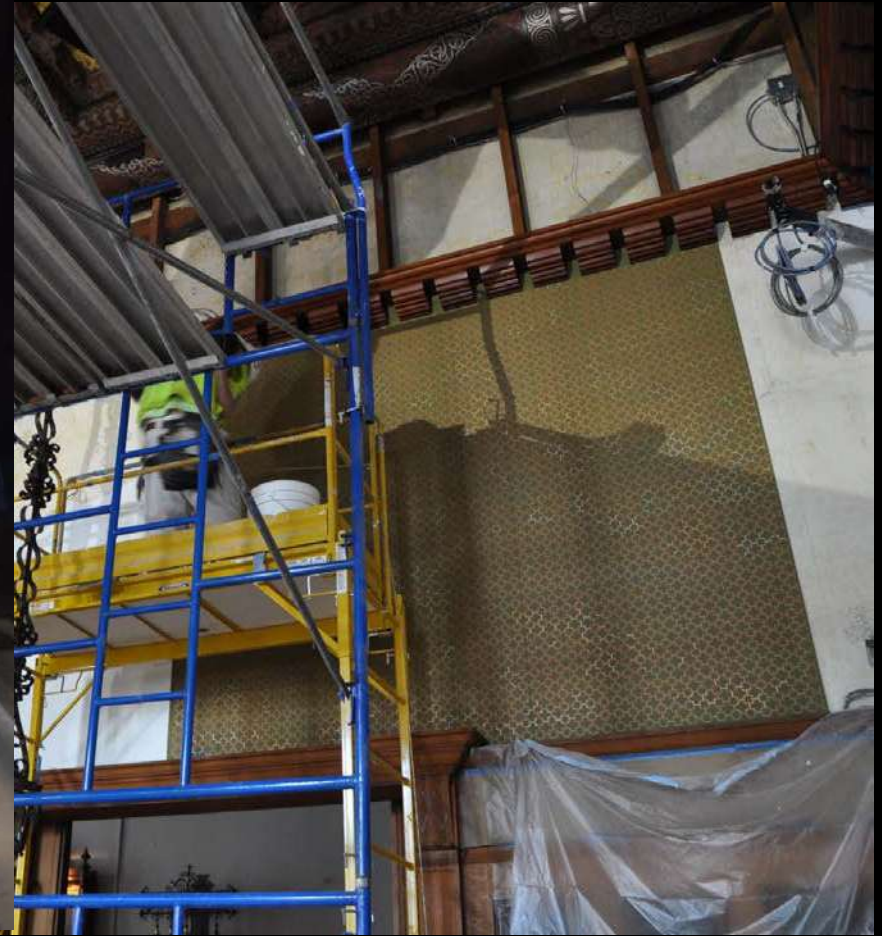
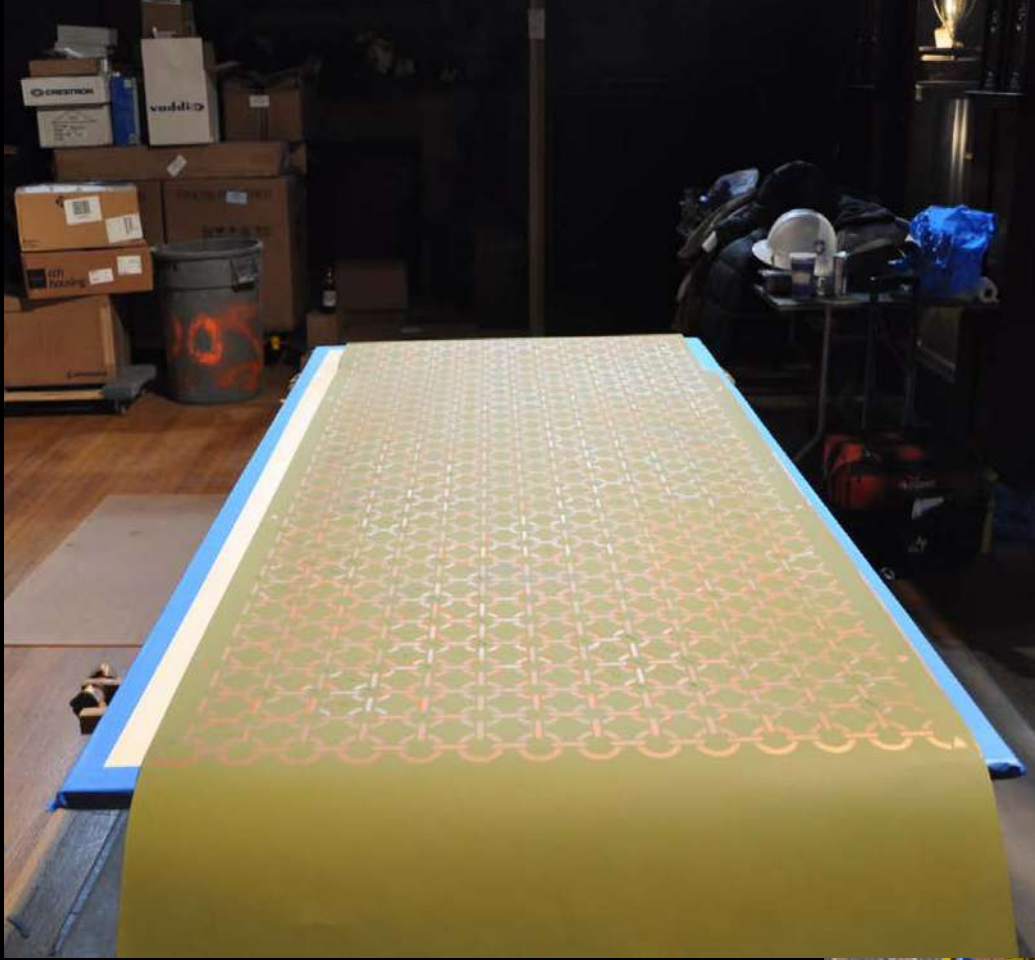






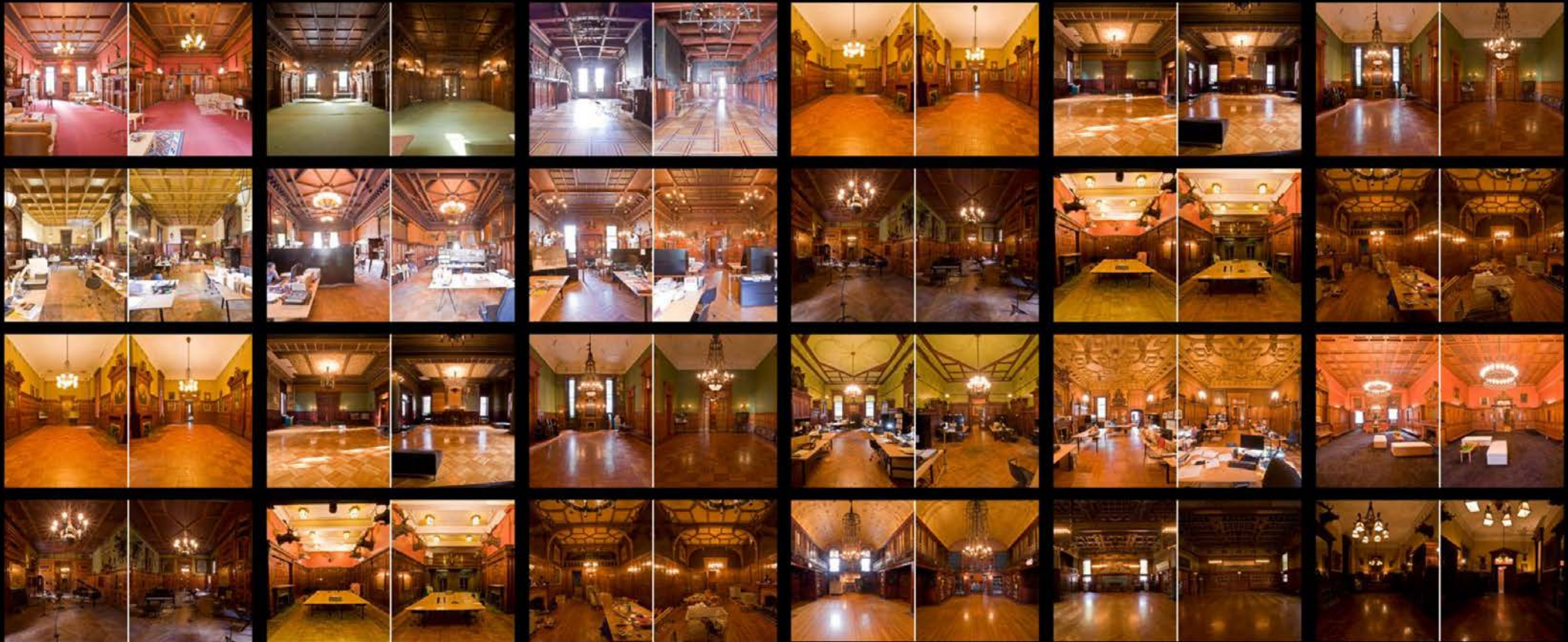




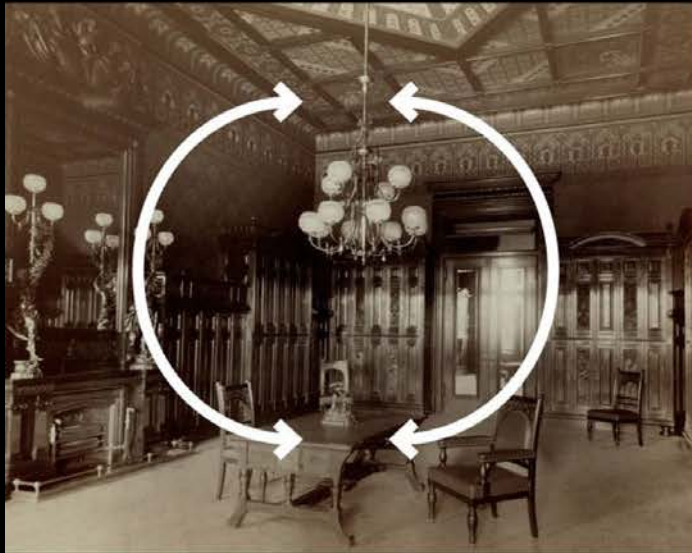








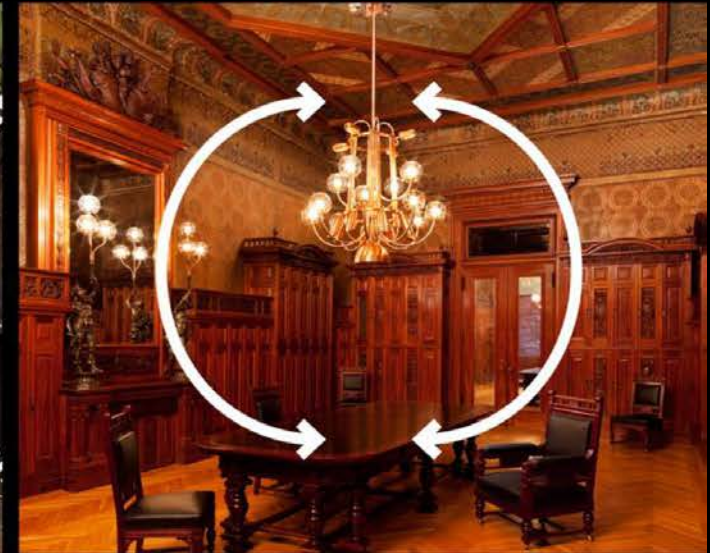




**ORIGINAL ROOM**  
HOLISTIC DESIGN



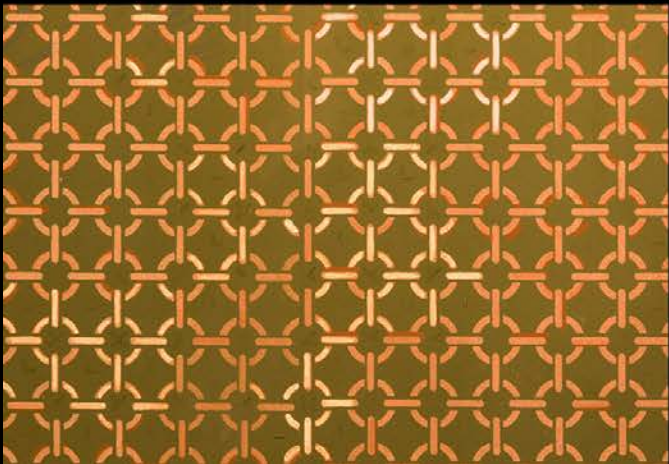
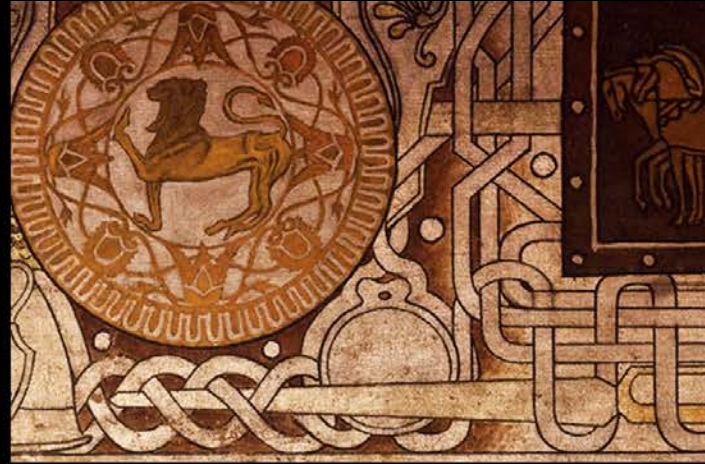
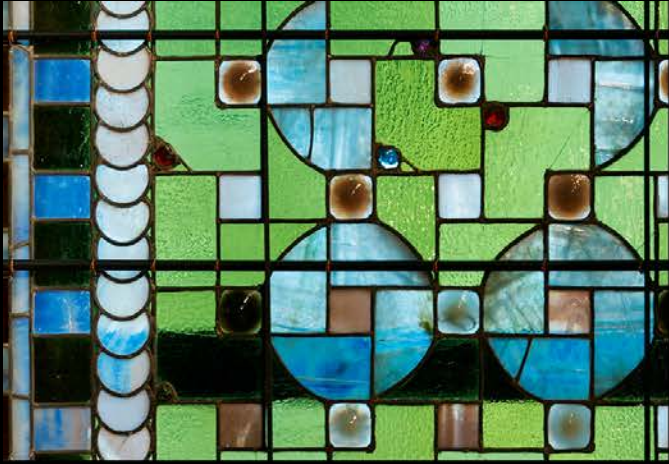
**'FOUND' ROOM**  
COMPROMISED & FRAGMENTED



**PRESERVED ROOM**  
HOLISTIC DESIGN



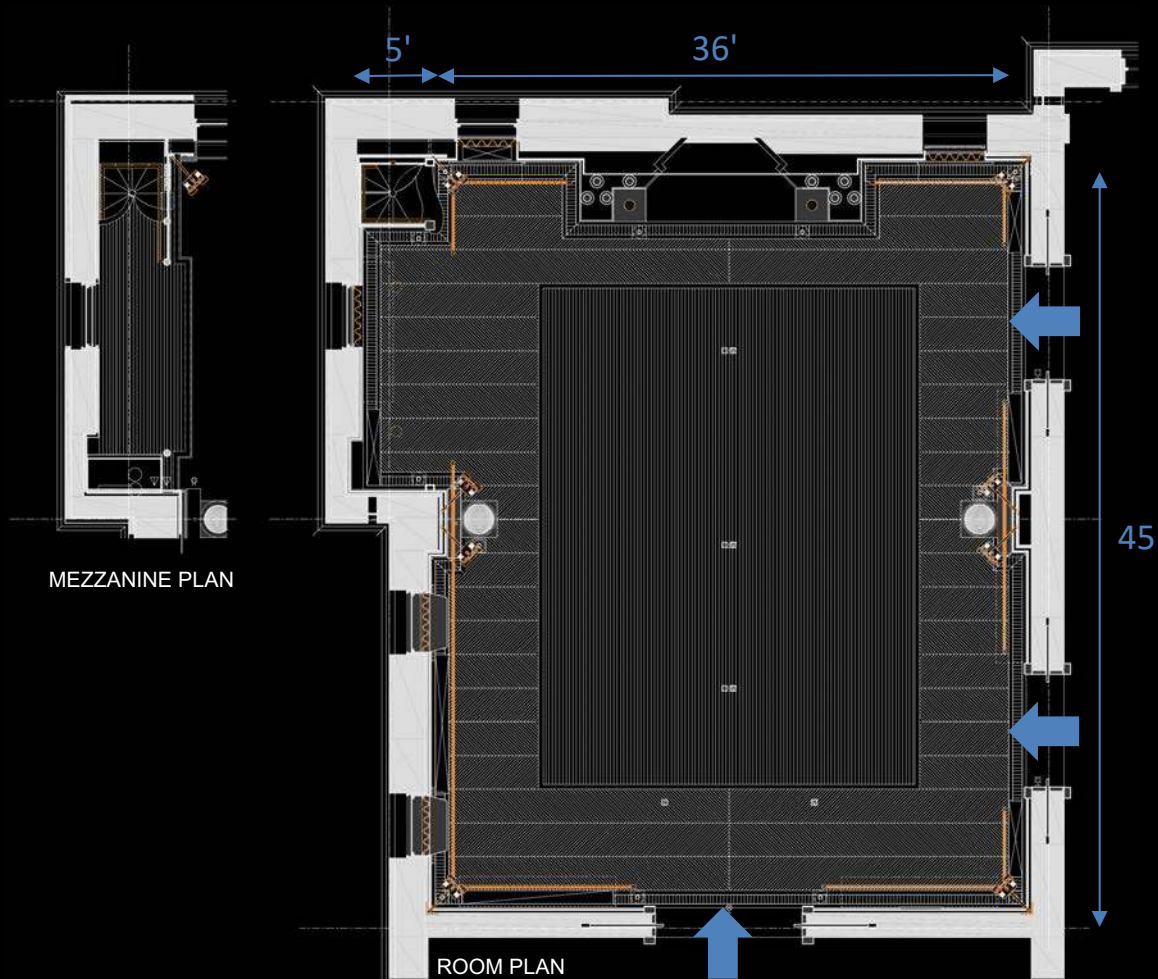






© HERZOG & DE MEURON







© HERZOG & DE MEURON





YOKE

CHANDELIER

BASKET

FIREPLACE

VETERANS ROOM







## NEW FIXTURES

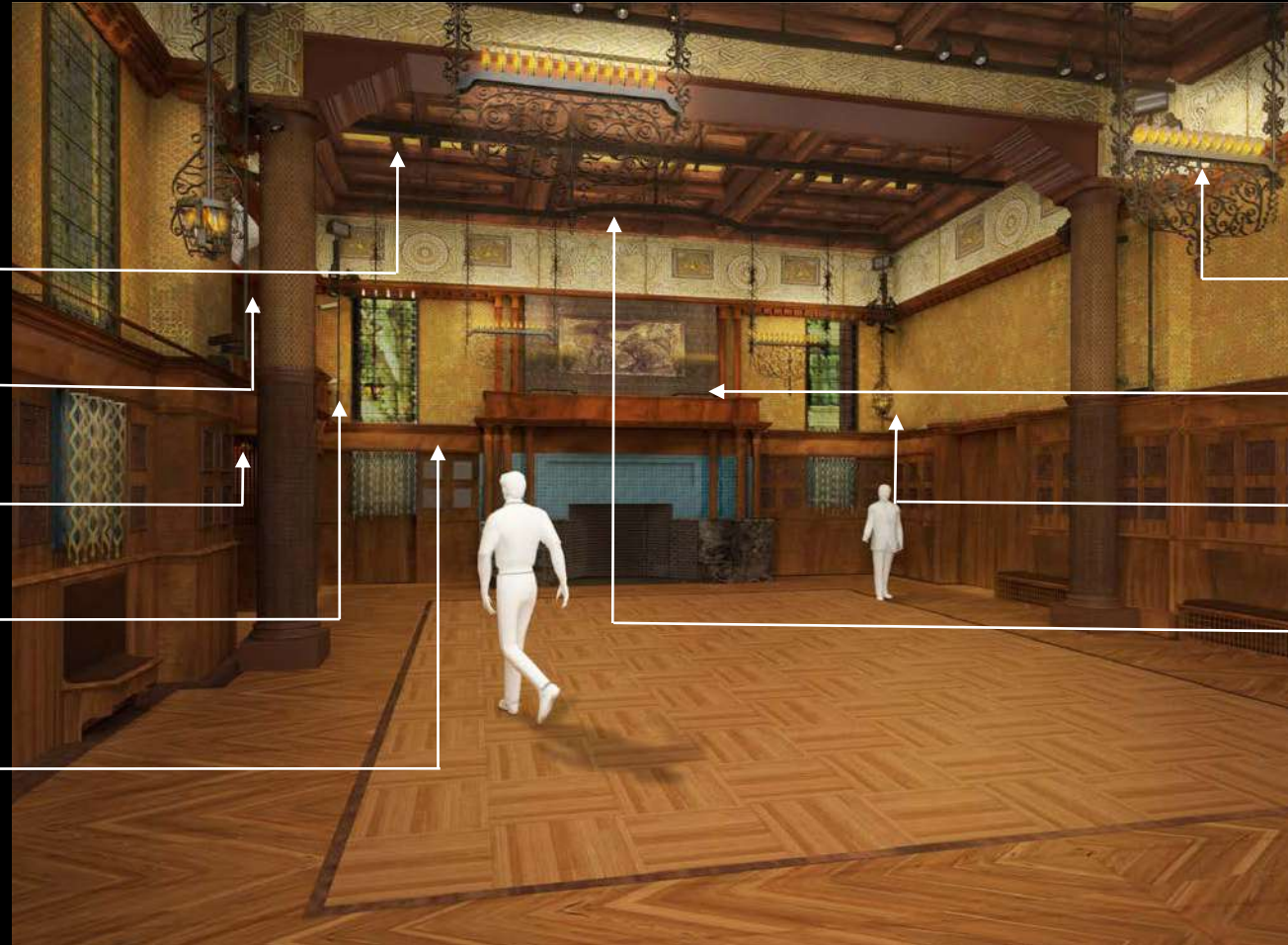
NEW YOKE

MEZZANINE

NICHE

THEATRICAL  
STANCHION

PICTURE LIGHT



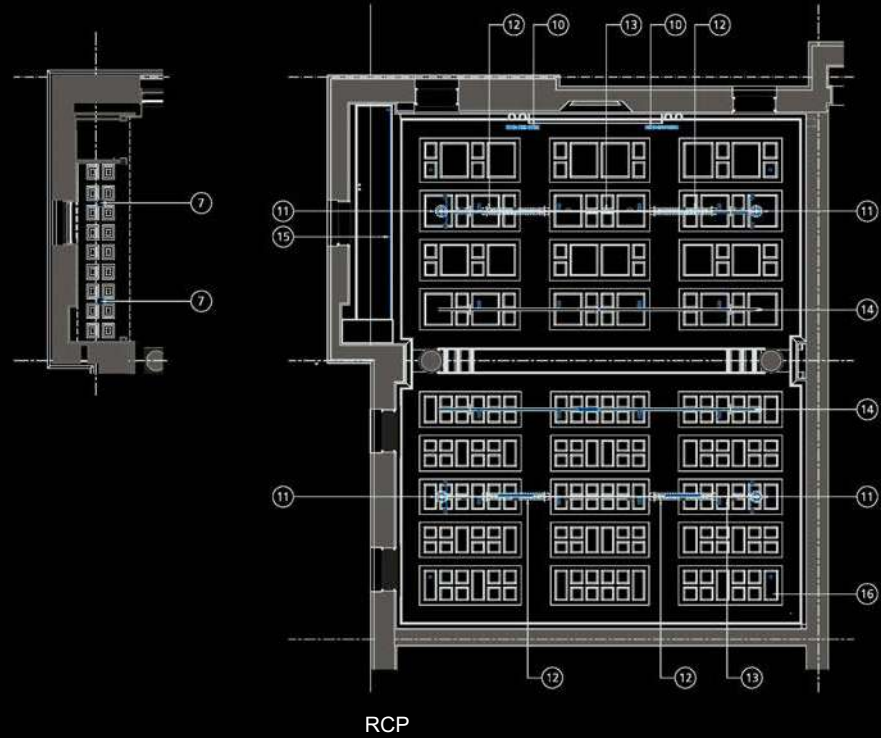
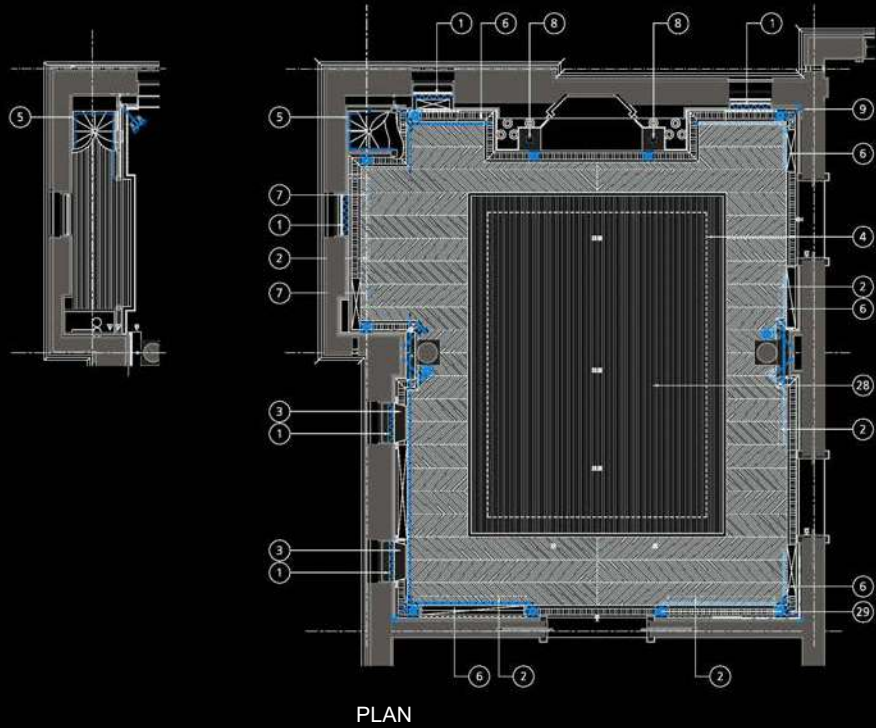
## HISTORIC FIXTURES

CHANDELIER

FIREPLACE

BASKET

EXISTING YOKE



© HERZOG & DE MEURON





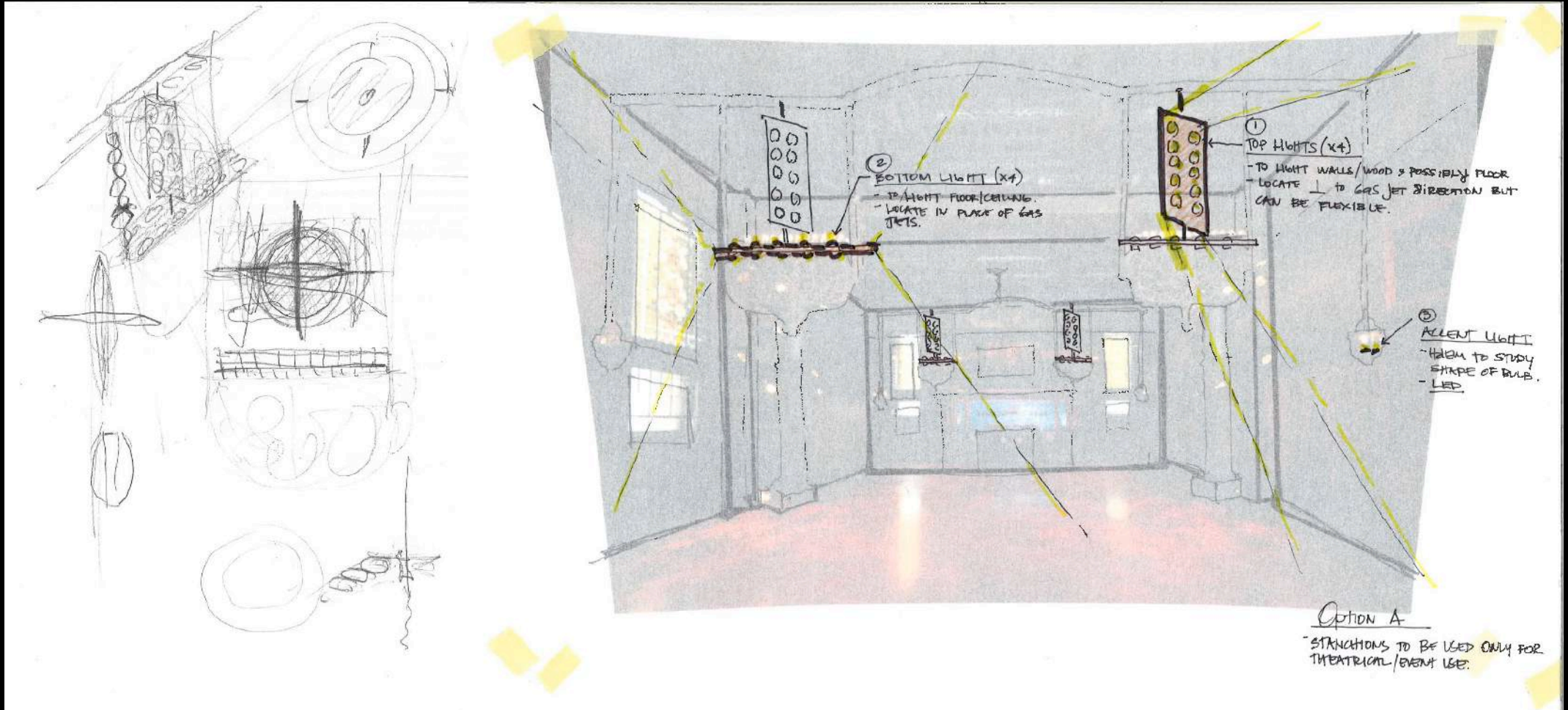
© HERZOG & DE MEURON





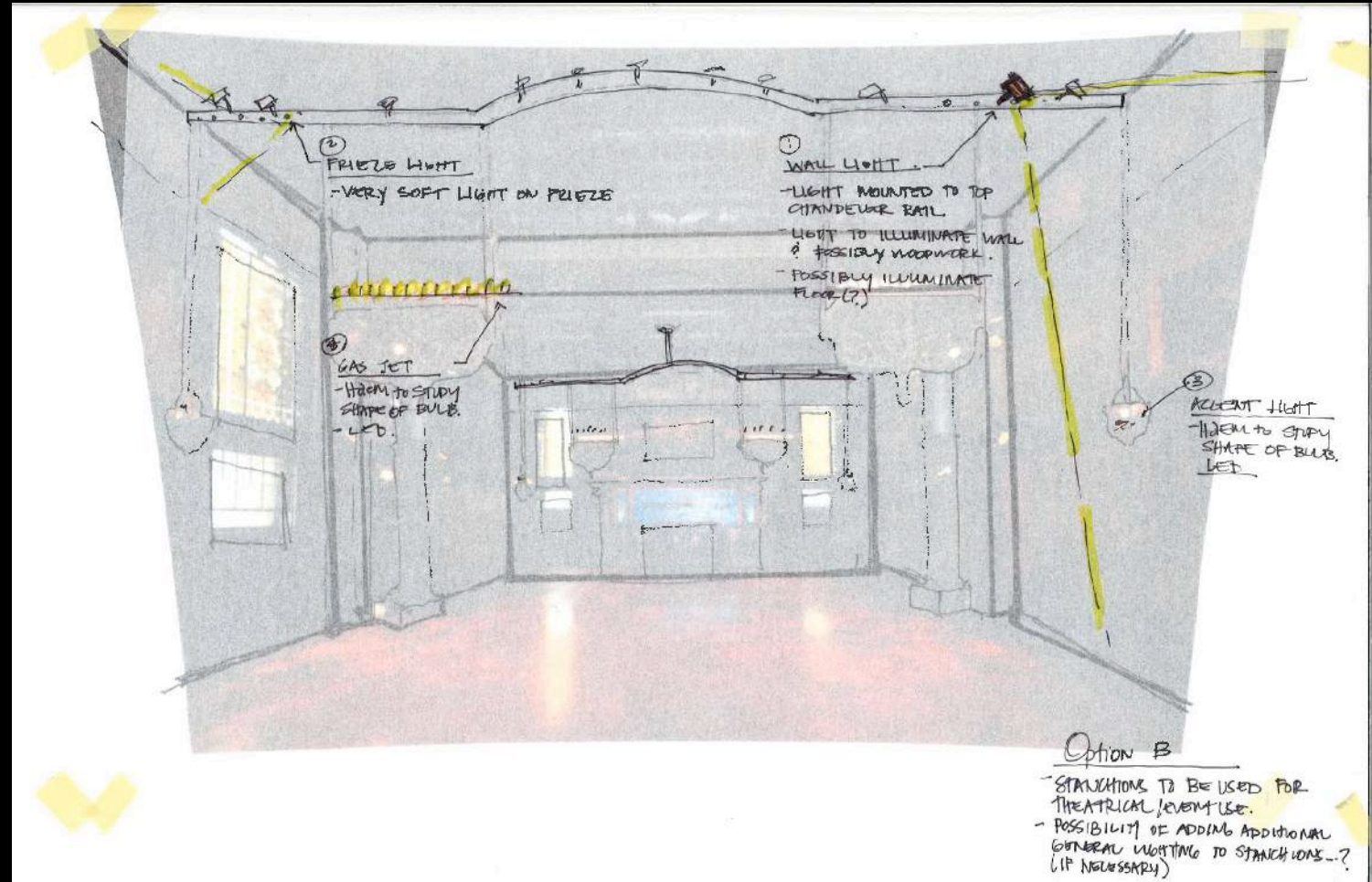
© HERZOG & DE MEURON





©HERZOG & DE MEURON





©HERZOG & DE MEURON







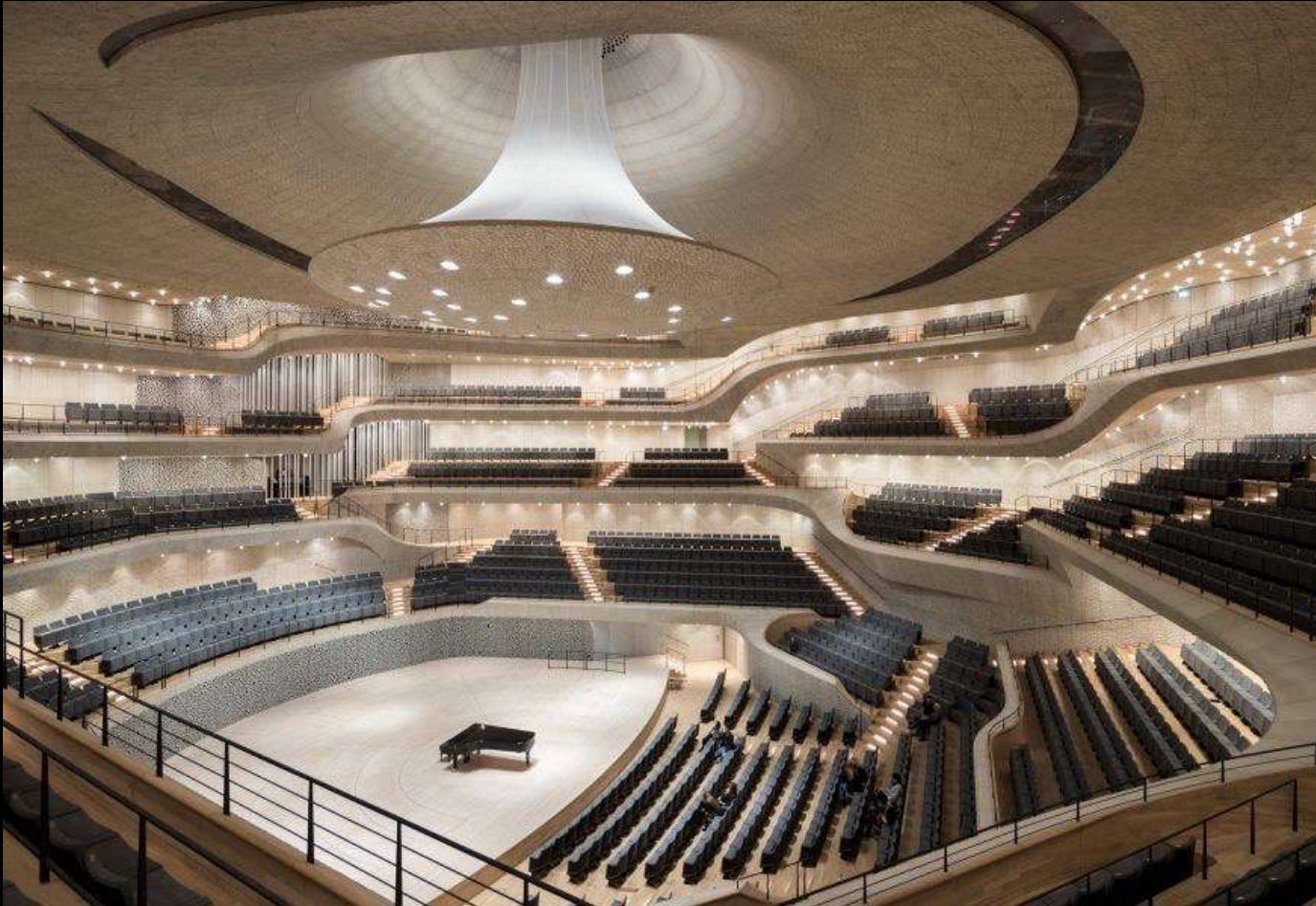


©HERZOG & DE MEURON

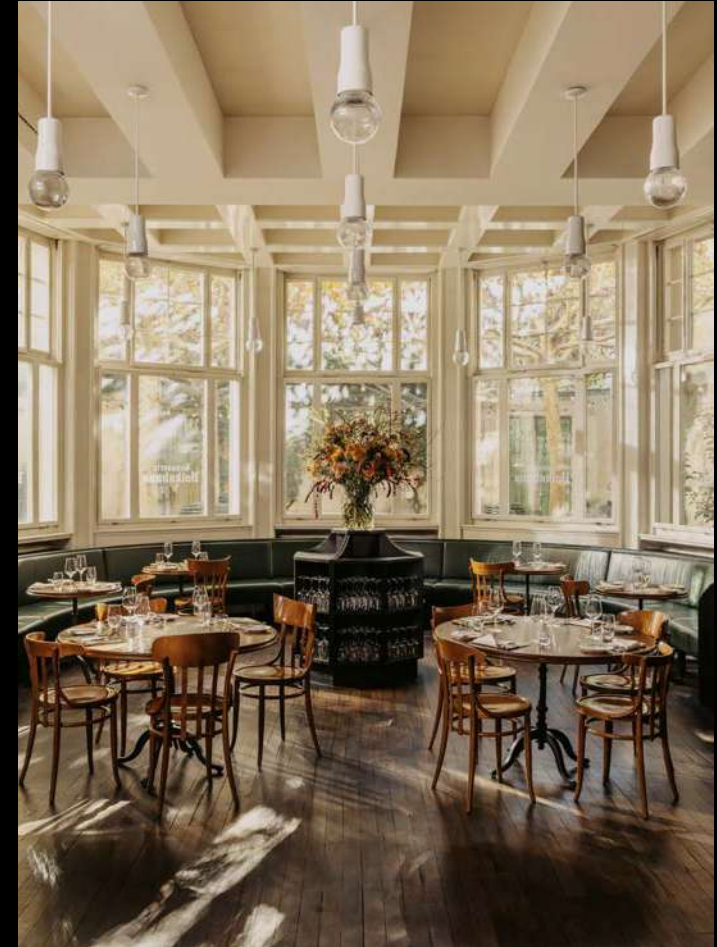


©HERZOG & DE MEURON





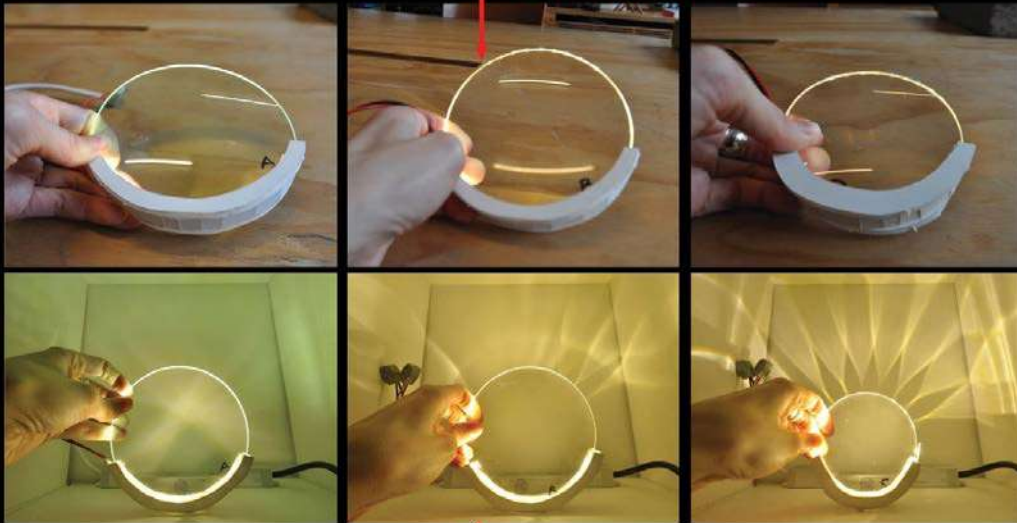
©HERZOG & DE MEURON



©HERZOG & DE MEURON





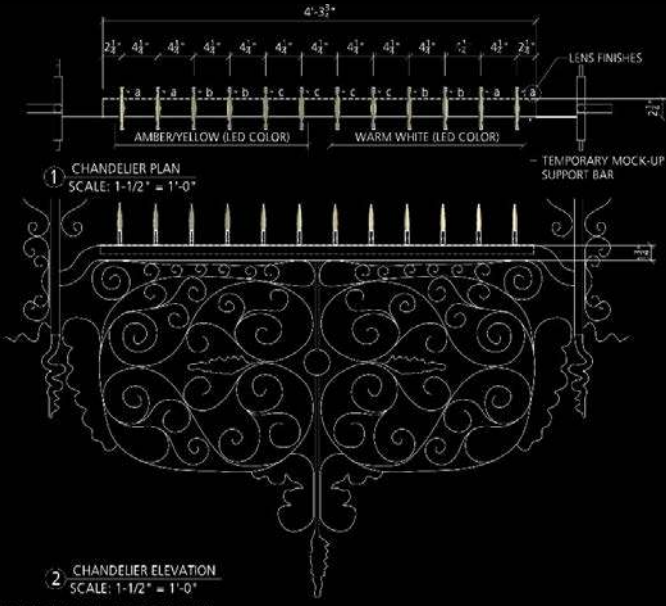


OPTION (A)  
NOTCHED BOTTOM - PARTIALLY SUCCESSFUL

OPTION (B)  
ROUND REVEL EDGE - SUCCESSFUL

OPTION (C)  
THICK EDGE - SUCCESSFUL

© HERZOG & DE MEURON

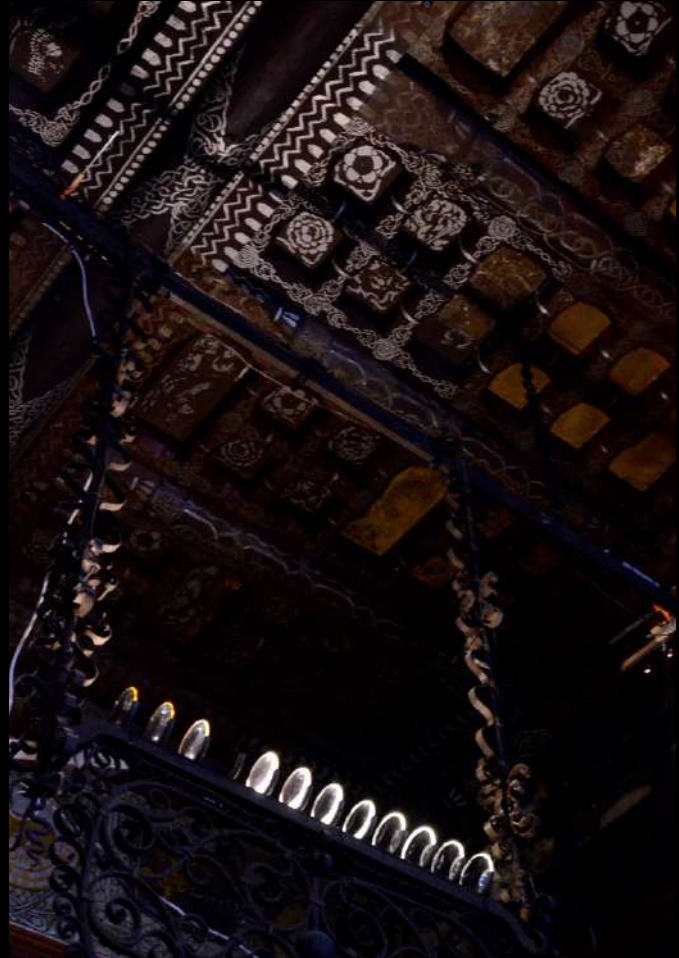


MOCK-UP PROPOSAL

OPTICAL LENSES TO BE FINISHED (3) WAYS W/ (2) LED COLOR OPTIONS. MOCK-UP TO BE MOUNTED TO EXISTING CHANDELIER AND METALS TO BE CUSTOM BRONZE TO MATCH EXISTING CHANDELIER. MATERIAL TO BE SUPPLIED BY H&M FOR AURORA'S USE IN MOCK-UP: (1) 8' UNFINISHED LENSES, (1) DIMMABLE DRIVER, (1) WARM WHITE LED TAPE & (1) AMBER LED TAPE.

© HERZOG & DE MEURON





© HERZOG & DE MEURON





©HERZOG & DE MEURON





**MOCK-UP LIGHT SOURCE**  
3/8" WIDE LED STRIP LIGHT RECESSED IN FRAME

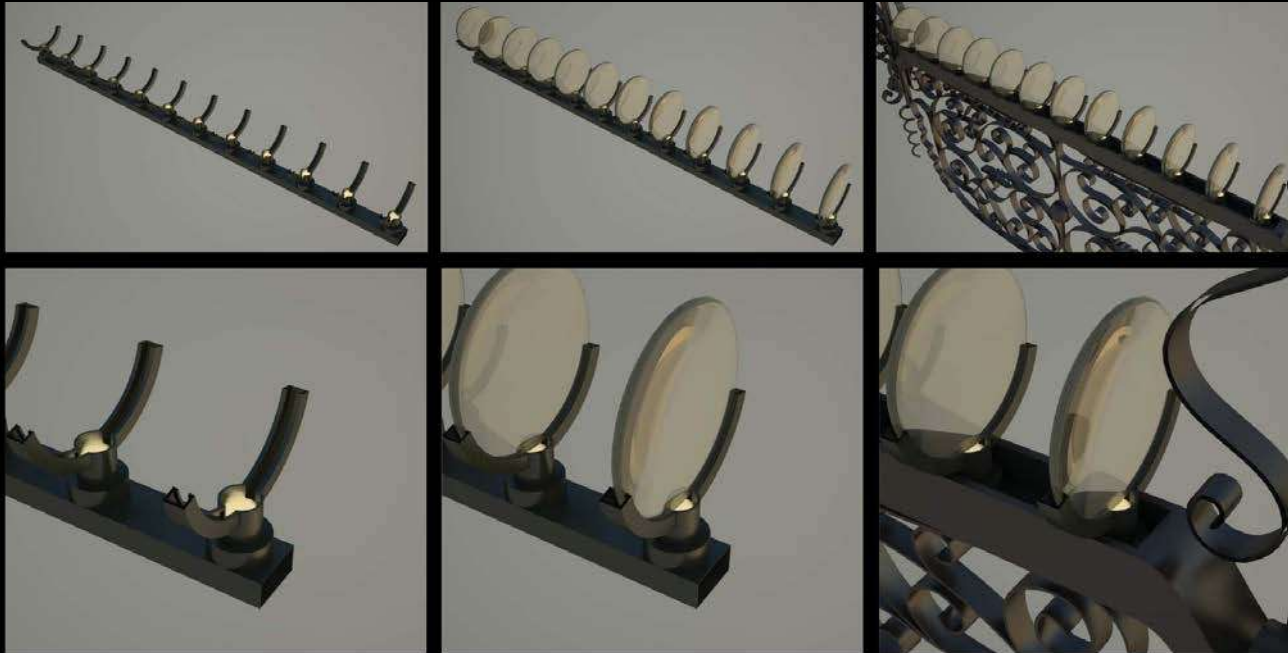


**PROPOSED LIGHT SOURCE**  
SINGLE LED SOURCE LIGHT RECESSED IN LED HOUSING



©HERZOG & DE MEURON

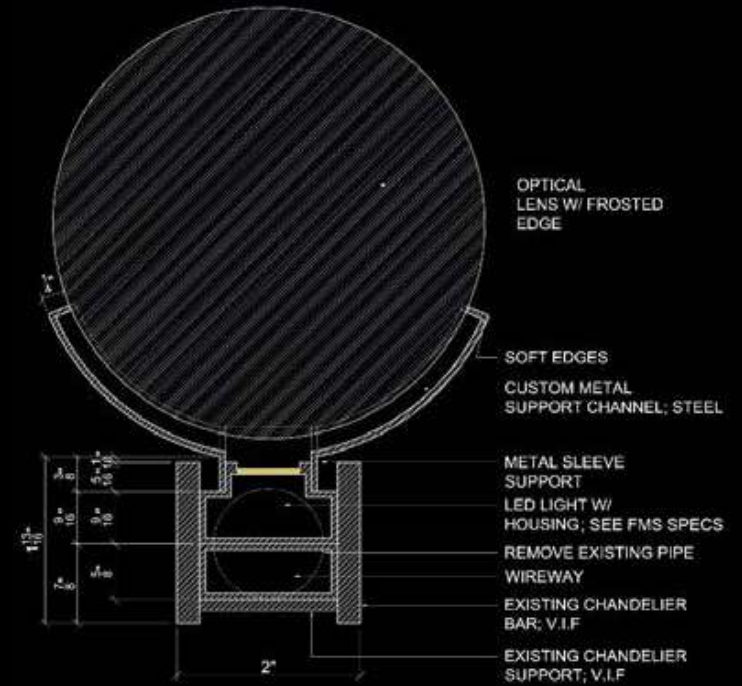




**STEP 1**  
METAL HOUSING & LED LIGHTING

**STEP 2**  
METAL HOUSING & LED LIGHTING + LENSES

**STEP 3**  
METAL HOUSING & LED LIGHTING + LENSES + CHANDELIER



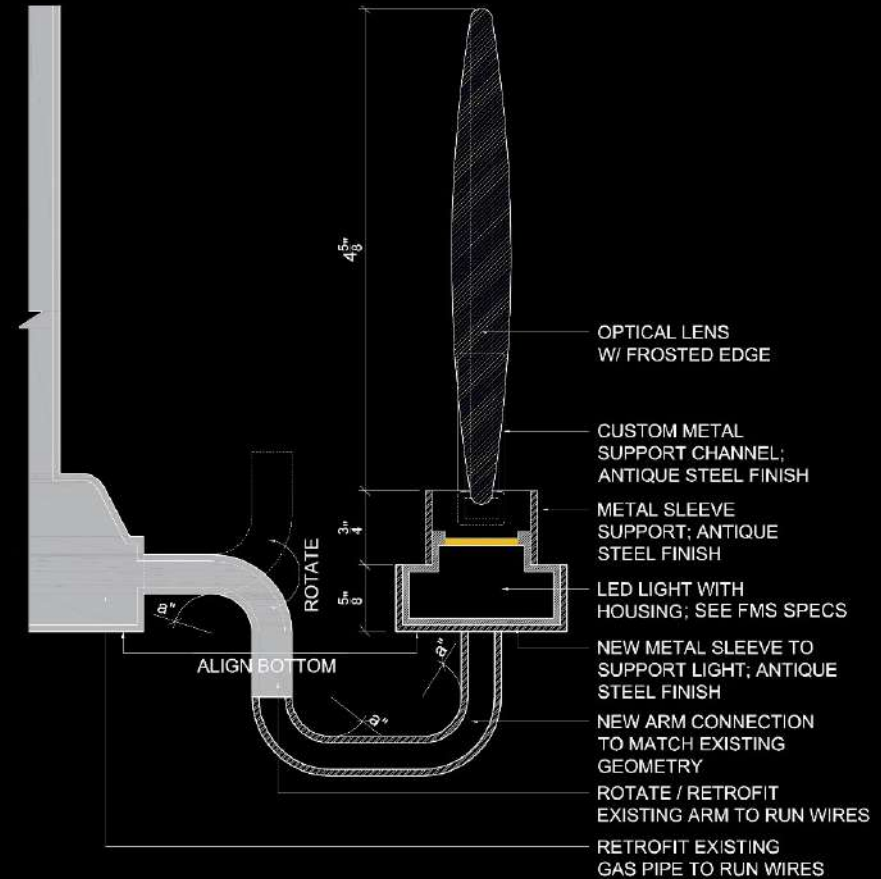
© HERZOG & DE MEURON







© HERZOG & DE MEURON





©HERZOG & DE MEURON

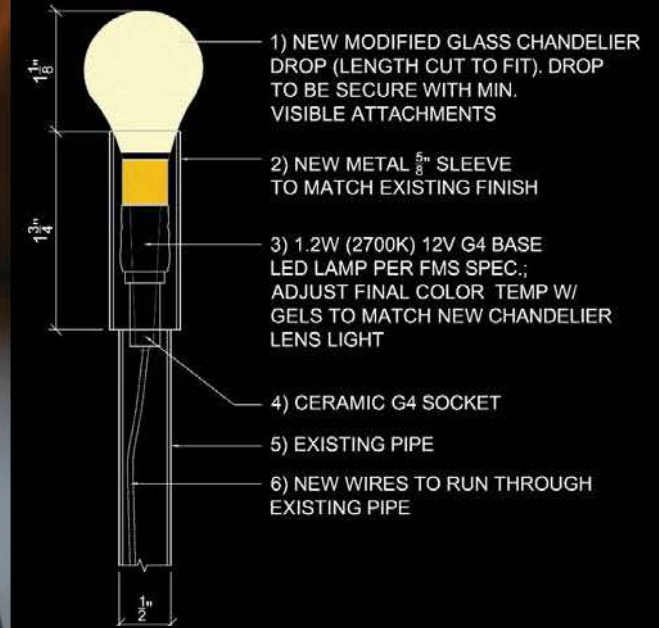






©HERZOG & DE MEURON





© HERZOG & DE MEURON





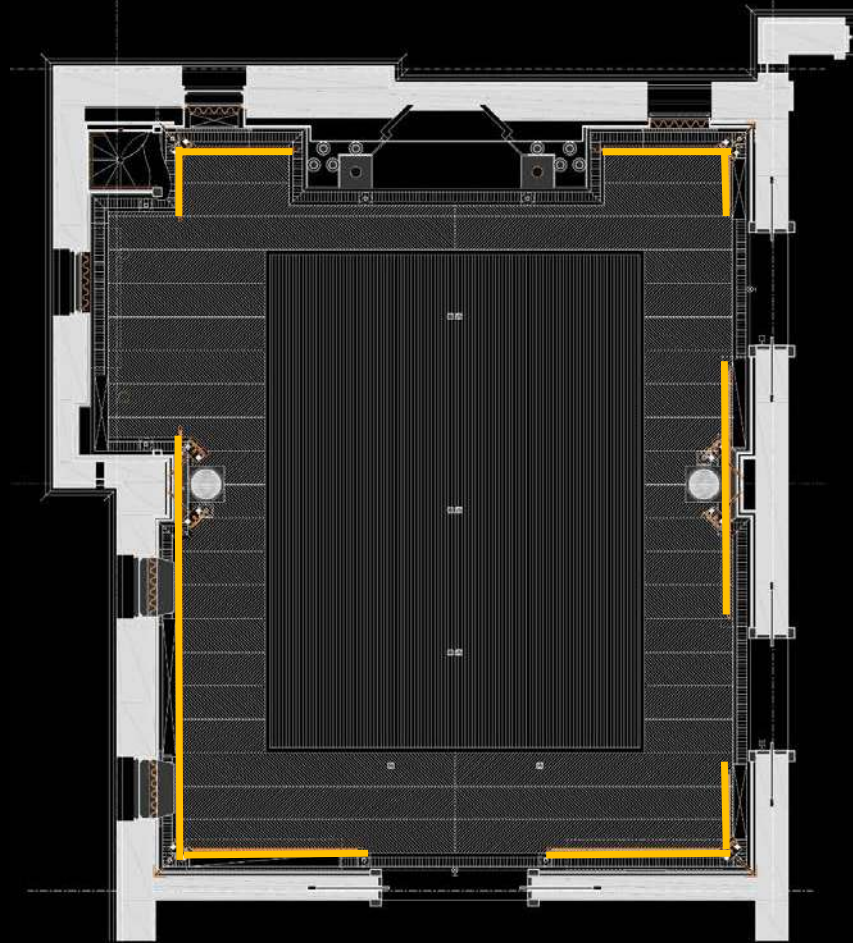
©HERZOG & DE MEURON





© HERZOG & DE MEURON

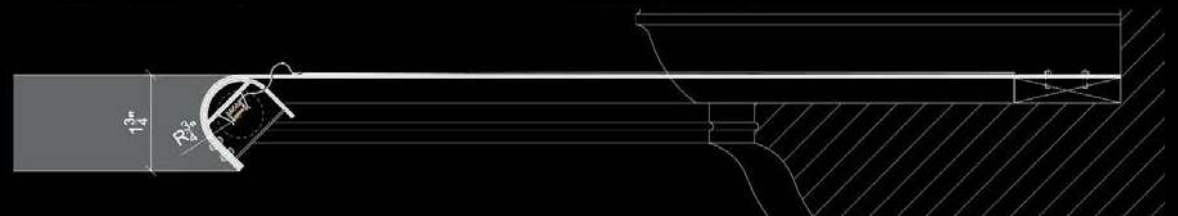
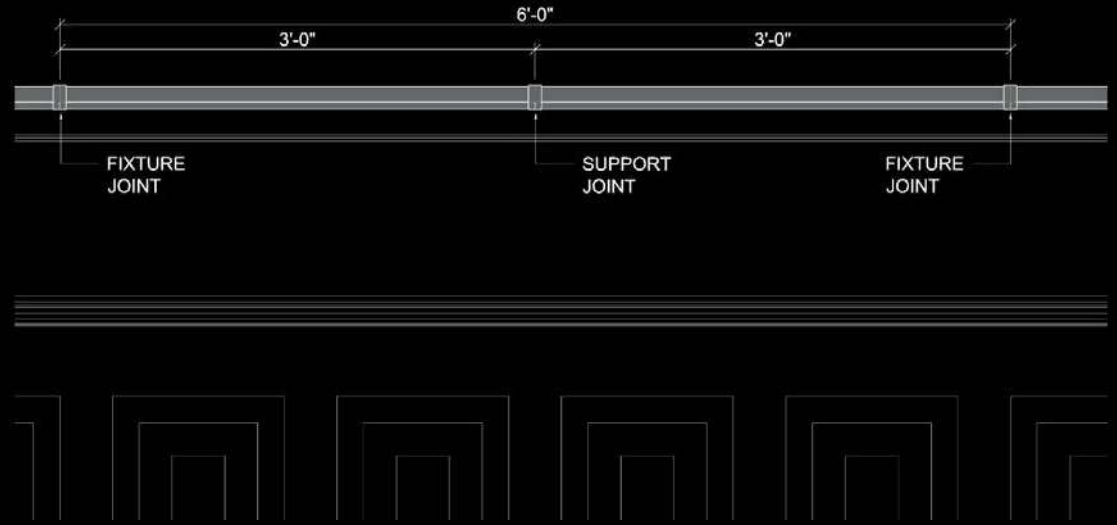




© HERZOG & DE MEURON







© HERZOG & DE MEURON





©HERZOG & DE MEURON











Richard Kelly summarized his theory of lighting, using three distinct types of lighting :



Richard Kelly summarized his theory of lighting, using three distinct types of lighting :

**PLAY OF BRILLIANTS** is light as information, which can be dynamic or colorful:

"Times Square at night. It is an eighteenth-century ballroom with crystal chandeliers and many candle flames. It is sunlight on a fountain or a rippling brook. It is a cache of diamonds in an open cave. It is the rose window of Chartres... Play of brilliants excites the optic nerves, and in turn stimulates the body and spirit, quickens the appetite, awakens curiosity, sharpens the wit..."





Richard Kelly summarized his theory of lighting, using three distinct types of lighting :

**PLAY OF BRILLIANTS** is light as information, which can be dynamic or colorful:

"Times Square at night. It is an eighteenth-century ballroom with crystal chandeliers and many candle flames. It is sunlight on a fountain or a rippling brook. It is a cache of diamonds in an open cave. It is the rose window of Chartres... Play of brilliants excites the optic nerves, and in turn stimulates the body and spirit, quickens the appetite, awakens curiosity, sharpens the wit..."

**FOCAL GLOW** is a way to point out important elements:

"The follow spot on the modern stage. It is the pool of light at your favorite reading chair. It is the shaft of sunshine that warms the end of the valley. It is candlelight on the face and a flashlight on a stair... Focal glow draws attention, pulls together diverse parts, sells merchandise, separates the important from the unimportant, helps people see."



Richard Kelly summarized his theory of lighting, using three distinct types of lighting :

**PLAY OF BRILLIANTS** is light as information, which can be dynamic or colorful:

"Times Square at night. It is an eighteenth-century ballroom with crystal chandeliers and many candle flames. It is sunlight on a fountain or a rippling brook. It is a cache of diamonds in an open cave. It is the rose window of Chartres... Play of brilliants excites the optic nerves, and in turn stimulates the body and spirit, quickens the appetite, awakens curiosity, sharpens the wit..."

**FOCAL GLOW** is a way to point out important elements:

"The follow spot on the modern stage. It is the pool of light at your favorite reading chair. It is the shaft of sunshine that warms the end of the valley. It is candlelight on the face and a flashlight on a stair... Focal glow draws attention, pulls together diverse parts, sells merchandise, separates the important from the unimportant, helps people see."

**AMBIENT LUMINESCENCE** is the background lighting that serves to perceive the environment in general:

"Ambient luminescence is the uninterrupted light of a snowy morning in the open country. It is fog light at sea in a small boat, it is a twilight haze on a wide river where shore and water and sky are indistinguishable. It is in any art gallery with strip-lighted walls, translucent ceilings, and a white floor. (...) Ambient light produces shadowless illumination. It minimizes form and bulk."

ArchDaily Light Matters: Richard Kelly, The Unsung Master Behind Modern Architecture's Greatest Buildings - 2014





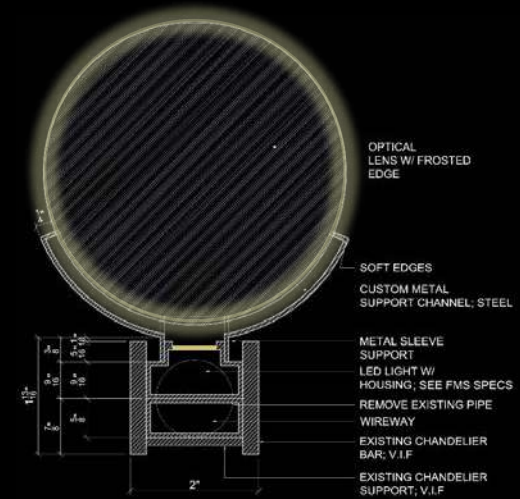
**BLANK SLATE**





**PLAY OF BRILLIANTS – HISTORIC CHANDELIERS**





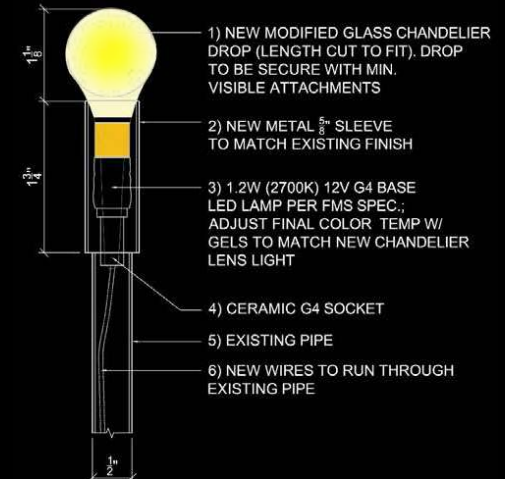
**PLAY OF BRILLIANTS – HISTORIC CHANDELIERS**





**PLAY OF BRILLIANTS – HISTORIC FIREPLACE FIXTURES**





**PLAY OF BRILLIANTS – HISTORIC FIREPLACE FIXTURES**





**FOCAL GLOW – NEW YOKES**





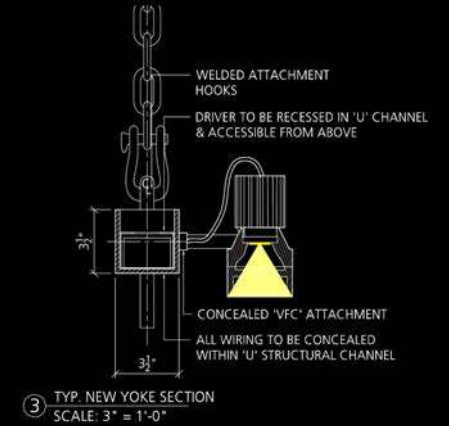


**FOCAL GLOW – NEW YOKES**





**FOCAL GLOW – NEW YOKES**





**FOCAL GLOW - FRIEZE**



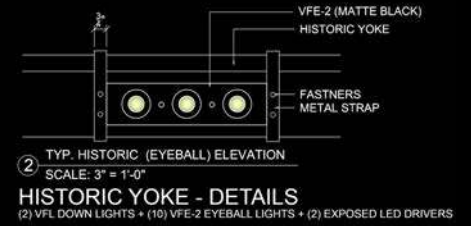


**FOCAL GLOW - FRIEZE**





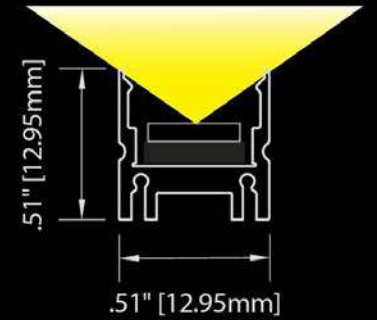
**FOCAL GLOW - FRIEZE**





**FOCAL GLOW - COVE**





**FOCAL GLOW - COVE**

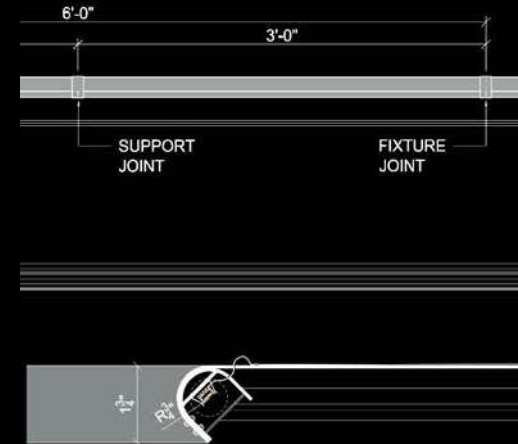




**FOCAL GLOW – MID-LEVEL PICTURE LIGHT**







**FOCAL GLOW – MID-LEVEL PICTURE LIGHT**





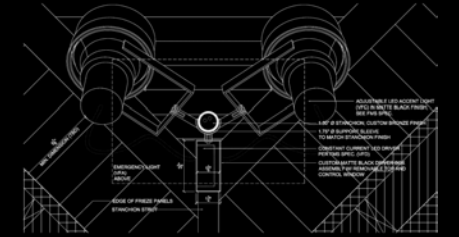
**AMBIENT LUMINESCENCE – STANCHIONS**





**AMBIENT LUMINESCENCE – STANCHIONS**





**AMBIENT LUMINESCENCE – STANCHIONS**





**FINISHED ROOM**



Chandelier Lenses



Fireplace



Mid-Level Picture Light



Niche Downlight



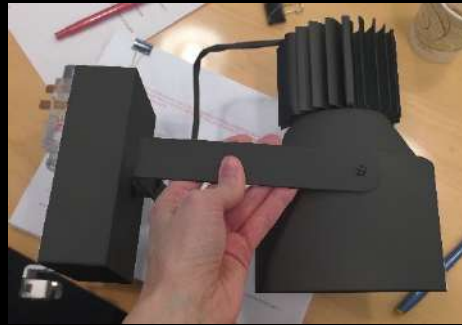
Cove Light



Frieze



Fireplace



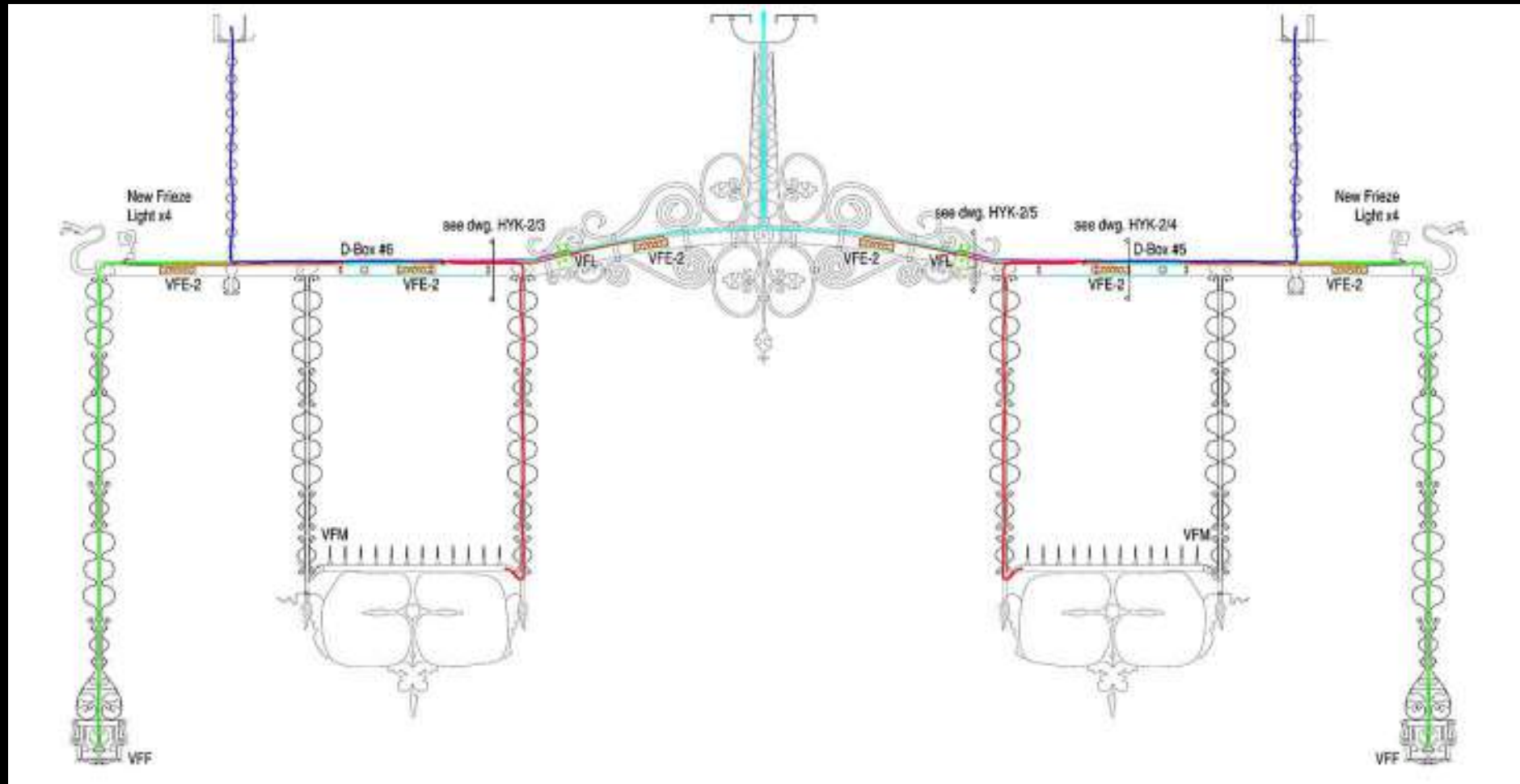
New Yorks and Corner Stanchions



Work/Emergency





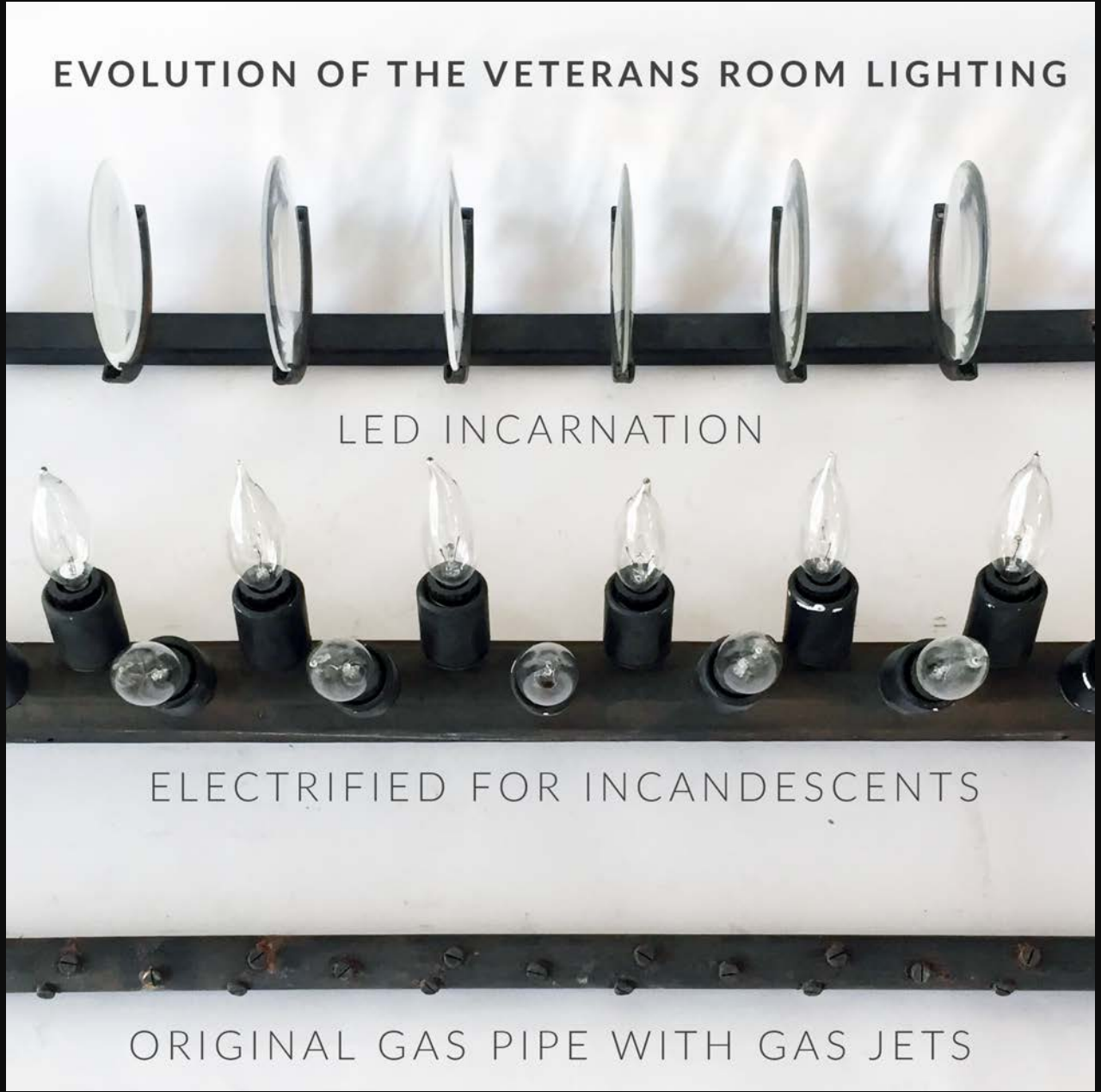












EVOLUTION OF THE VETERANS ROOM LIGHTING

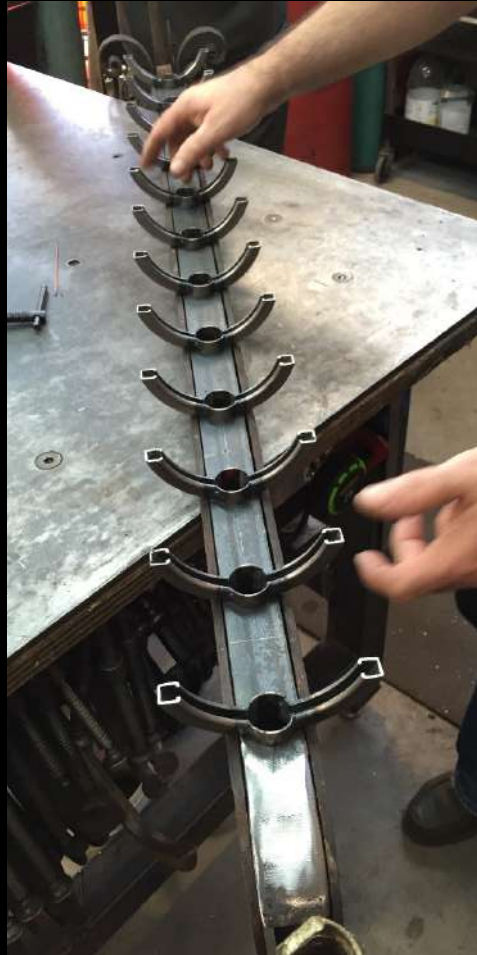
LED INCARNATION

ELECTRIFIED FOR INCANDESCENTS

ORIGINAL GAS PIPE WITH GAS JETS

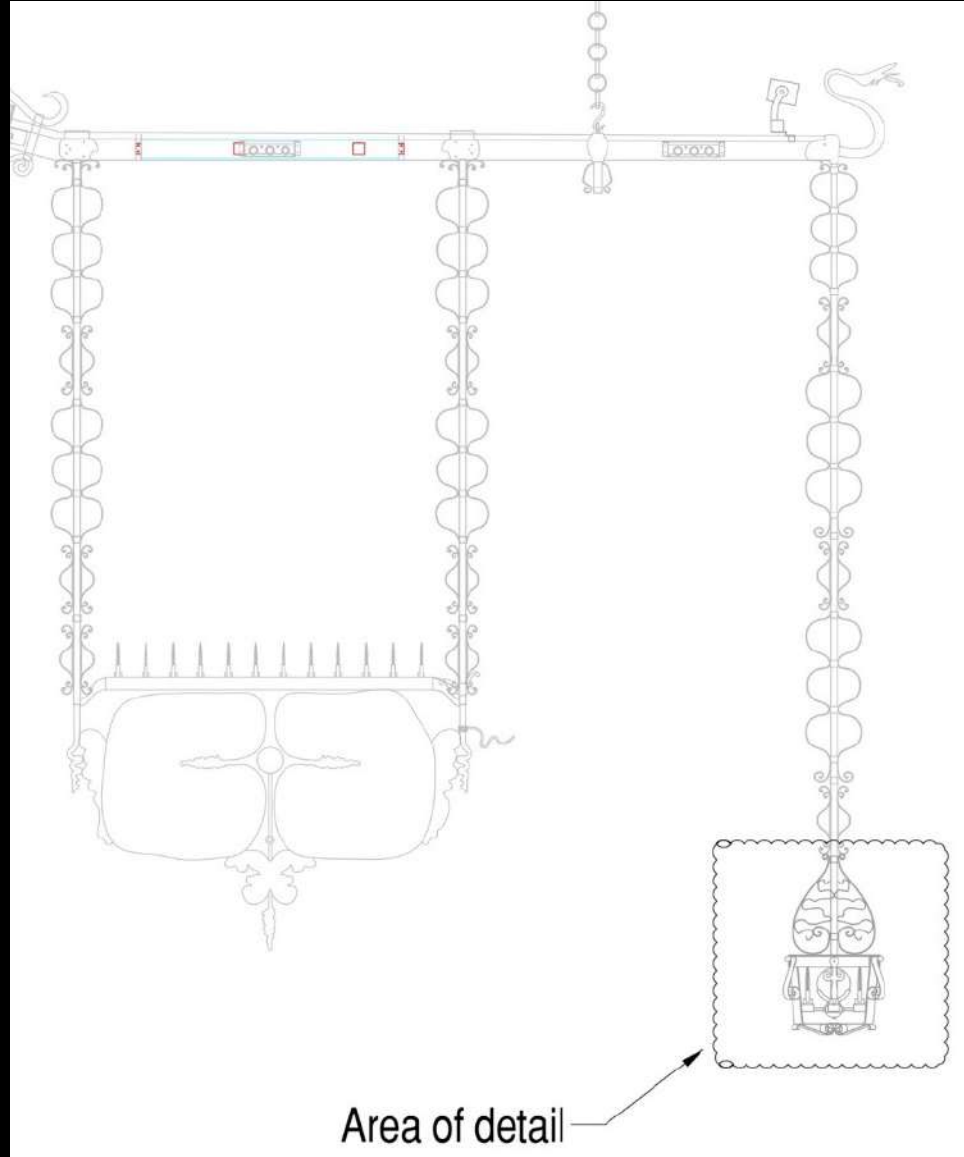












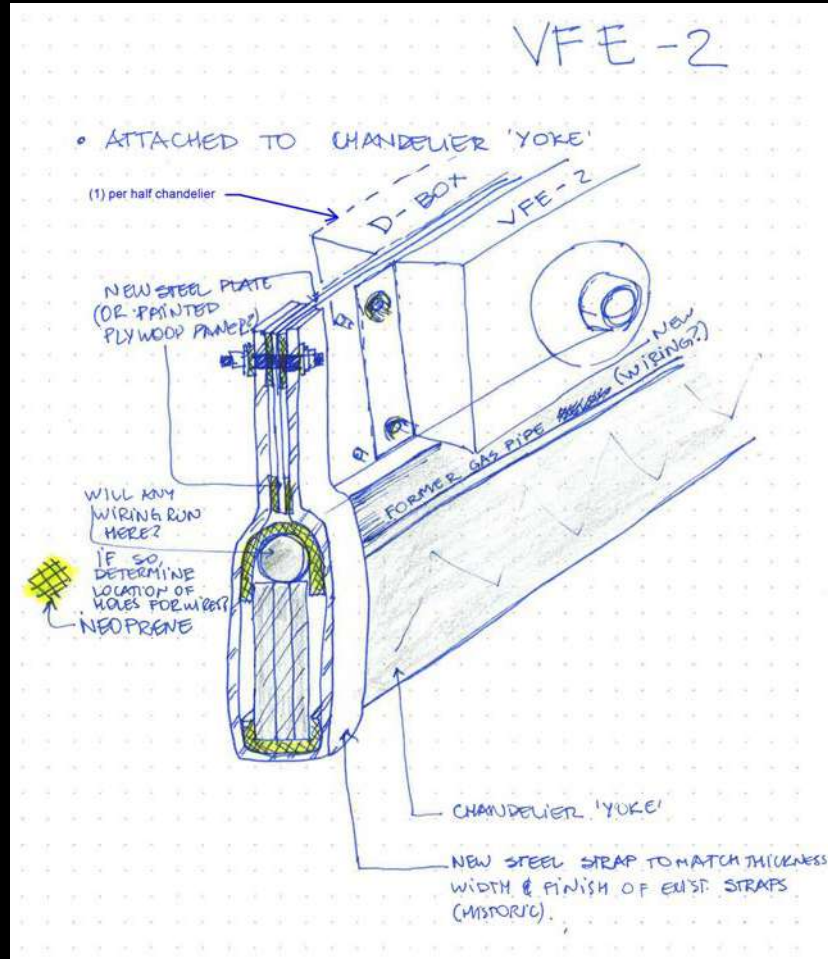
Area of detail

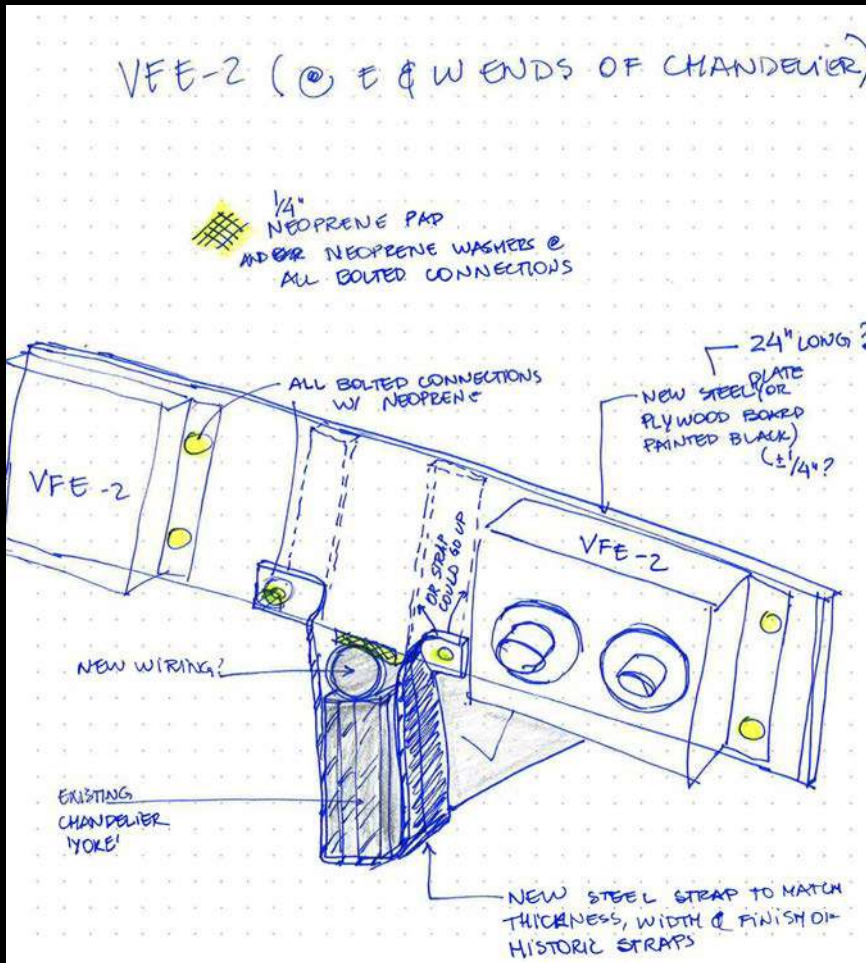










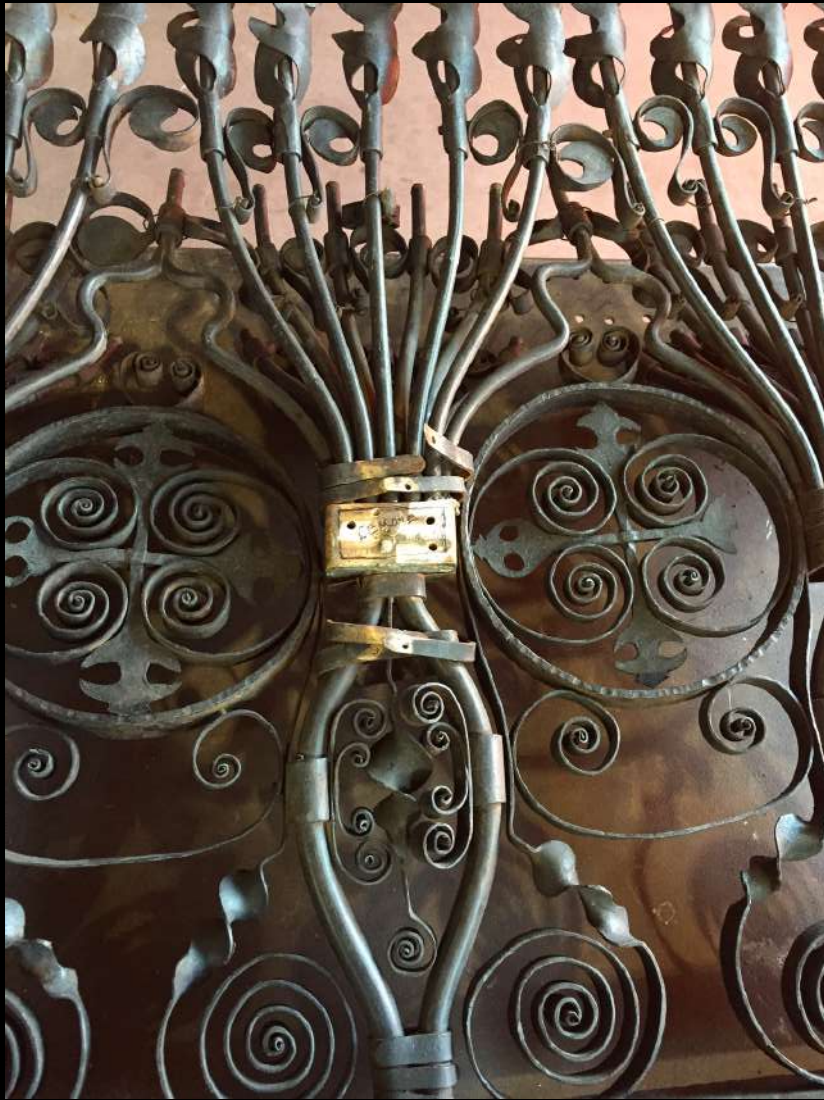


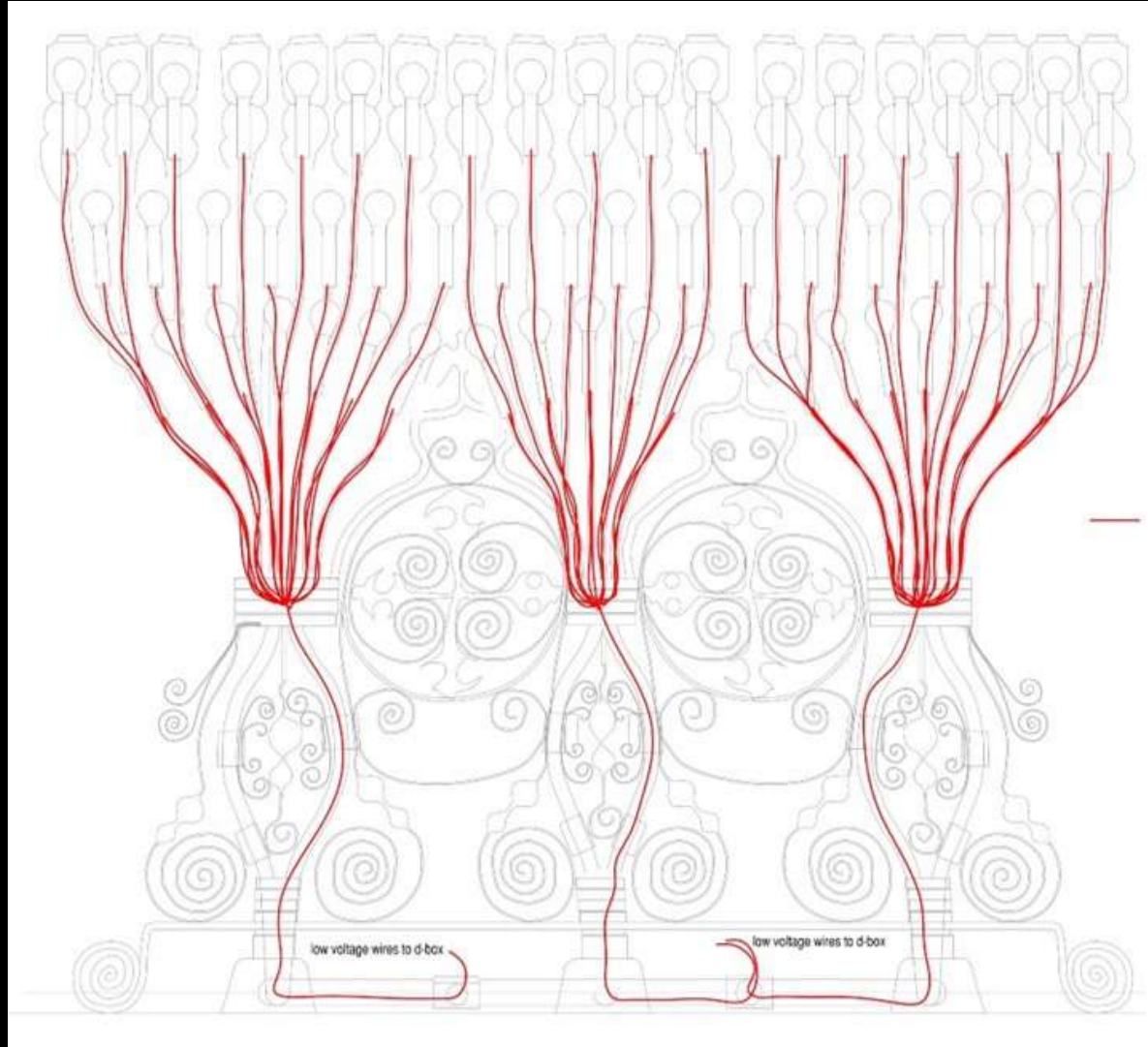








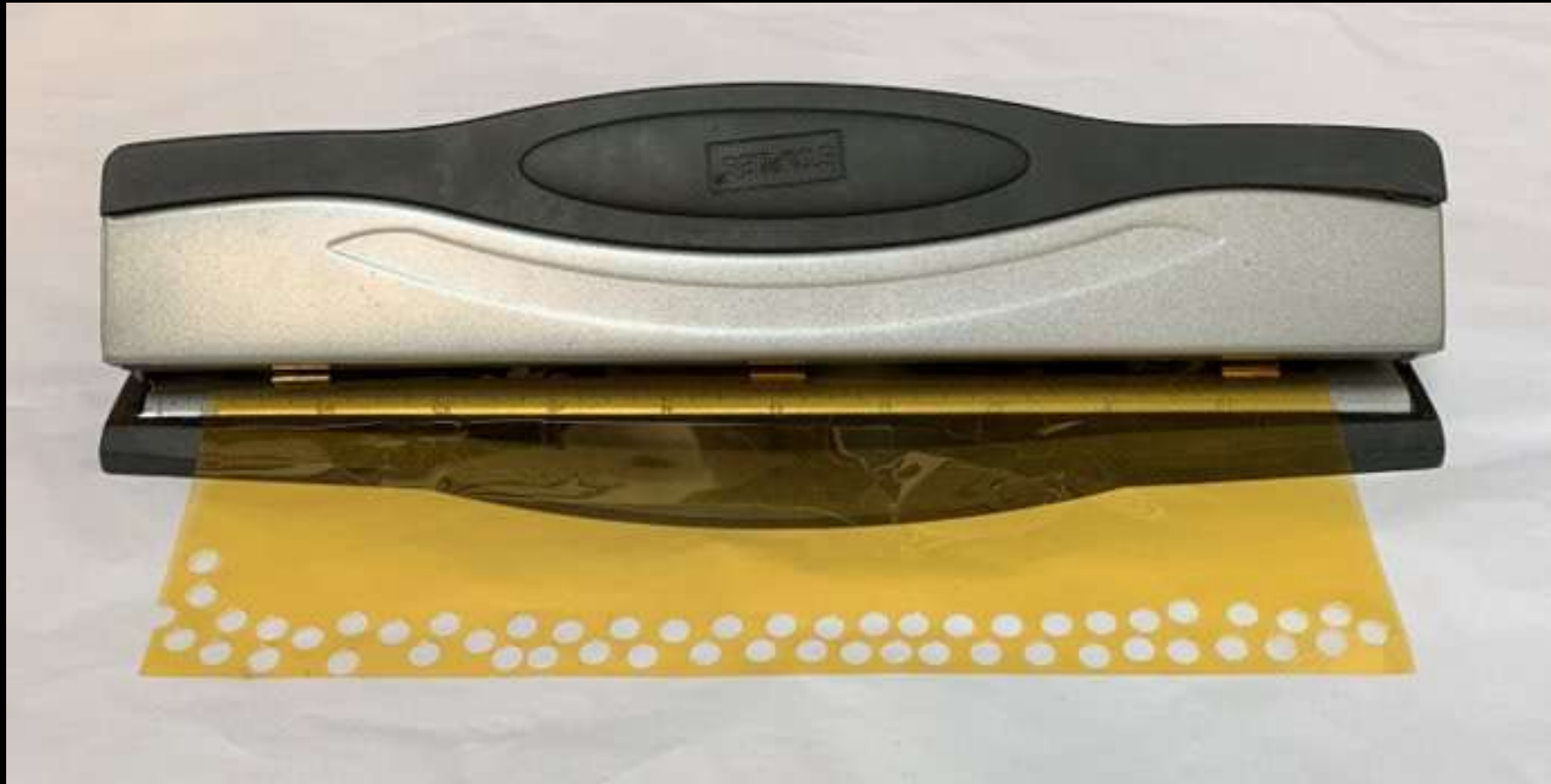


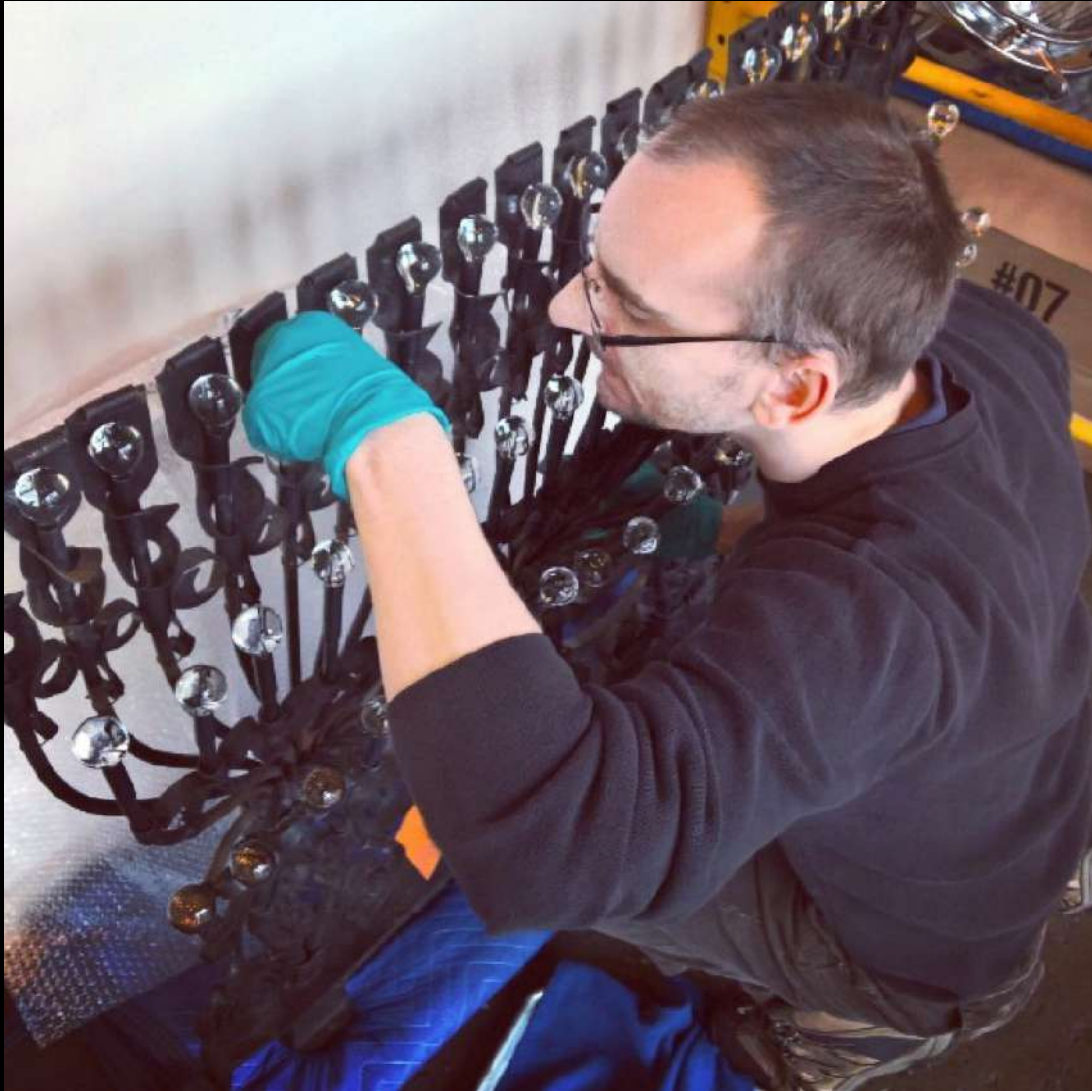






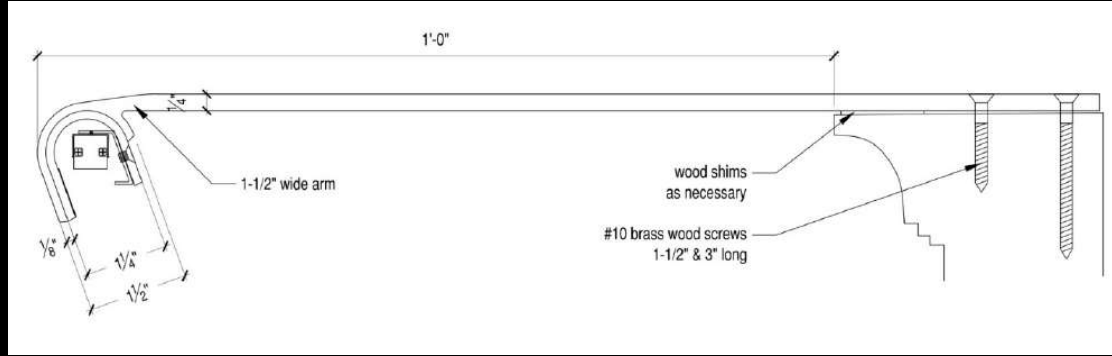






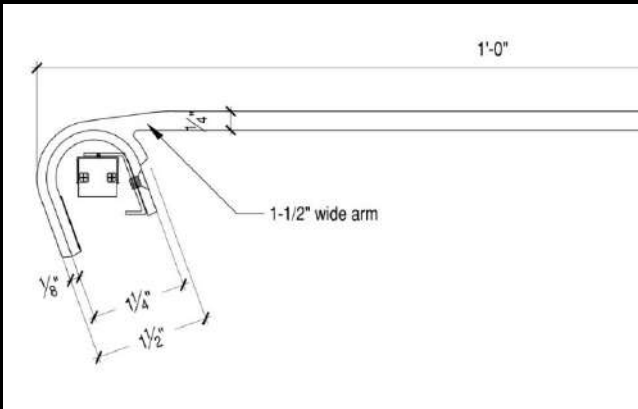




















**2016**



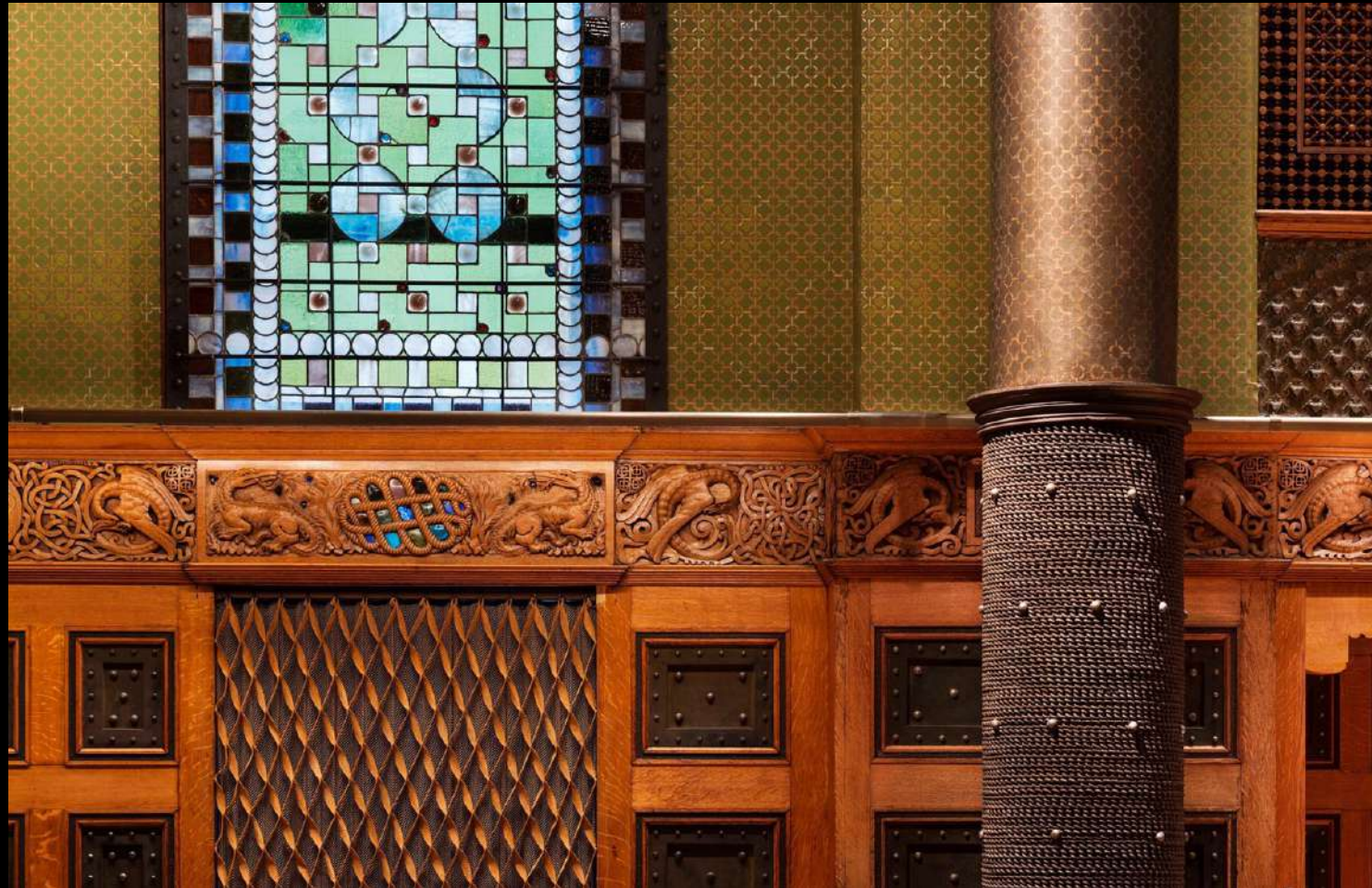
















This concludes The American Institute of Architects  
Continuing Education Systems Course

