

Designers Light Forum

Design for the Human Experience (0205)

Anna Ammari, AIA, LEED AP

Alfred Borden, FIALD, MIES, LC, CLD

Tuesday, March 13, 2018

Credit(s) earned on completion of this course will be reported to **AIA CES** for AIA members. Certificates of Completion for both AIA members and non-AIA members are available upon request.

This course is registered with **AIA CES** for continuing professional education. As such, it does not include content that may be deemed or construed to be an approval or endorsement by the AIA of any

material of construction or any method or manner of handling, using, distributing, or dealing in any material or product.

Questions related to specific materials, methods, and services will be addressed at the conclusion of this presentation.

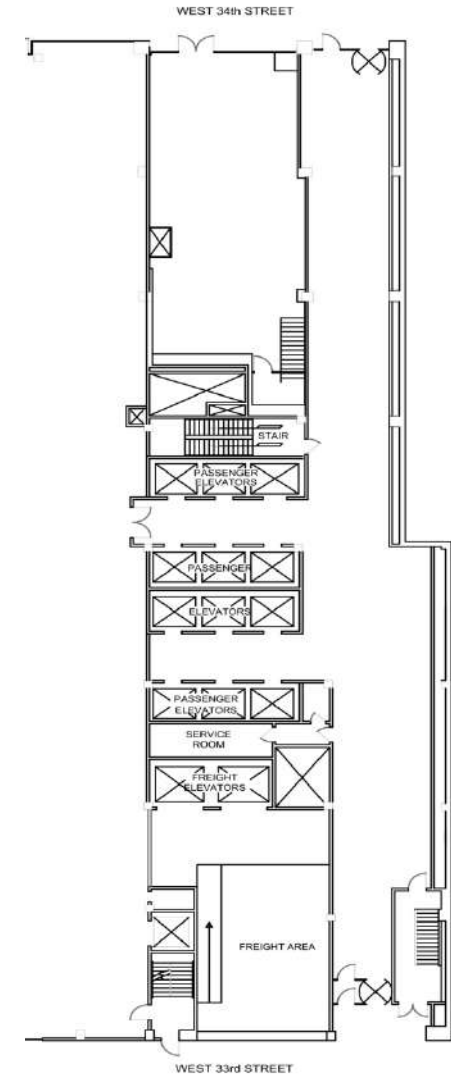
Learning Objectives

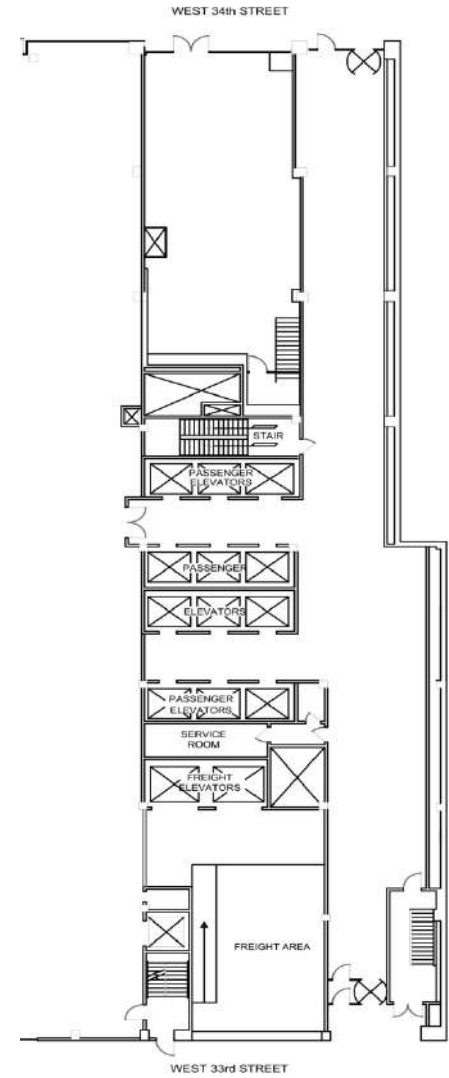
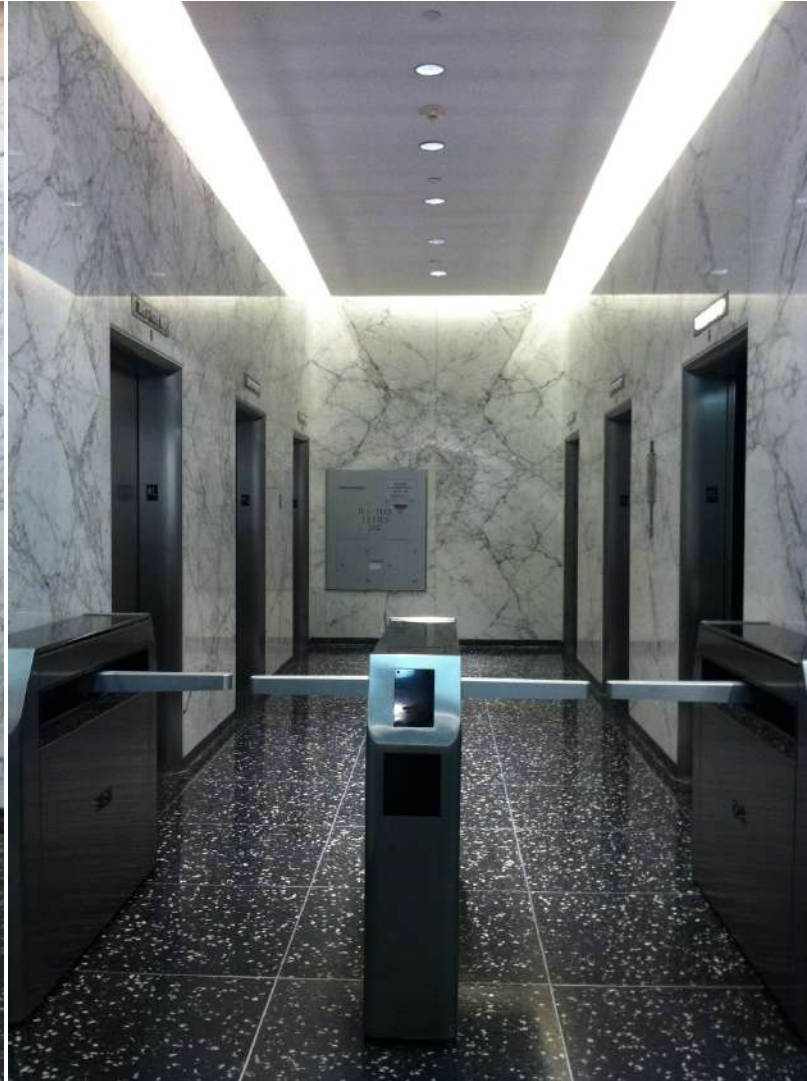
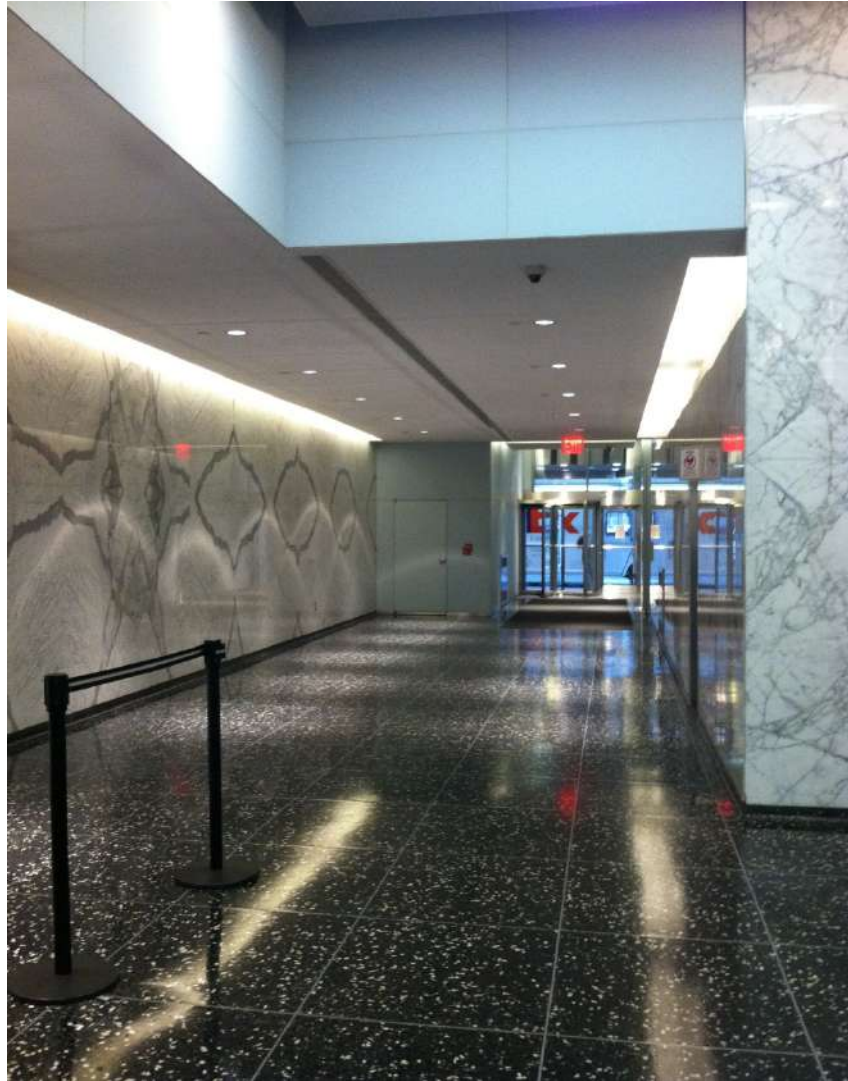
At the end of the this course, participants will be able to:

1. Attendees will learn how to reframe their approach to amenity space design and will understand how small intentional design decisions can have a significant impact on the human experience
2. Attendees will learn how a custom LED lighting solution can be achieved through modifications to existing products
3. Attendees will understand how subtle lighting applications can have a large impact
4. Attendees will learn about WELL Building Standards and how they can be conceptually applied to projects of all sizes and budgets



PREVIOUS LOBBY PHOTOS





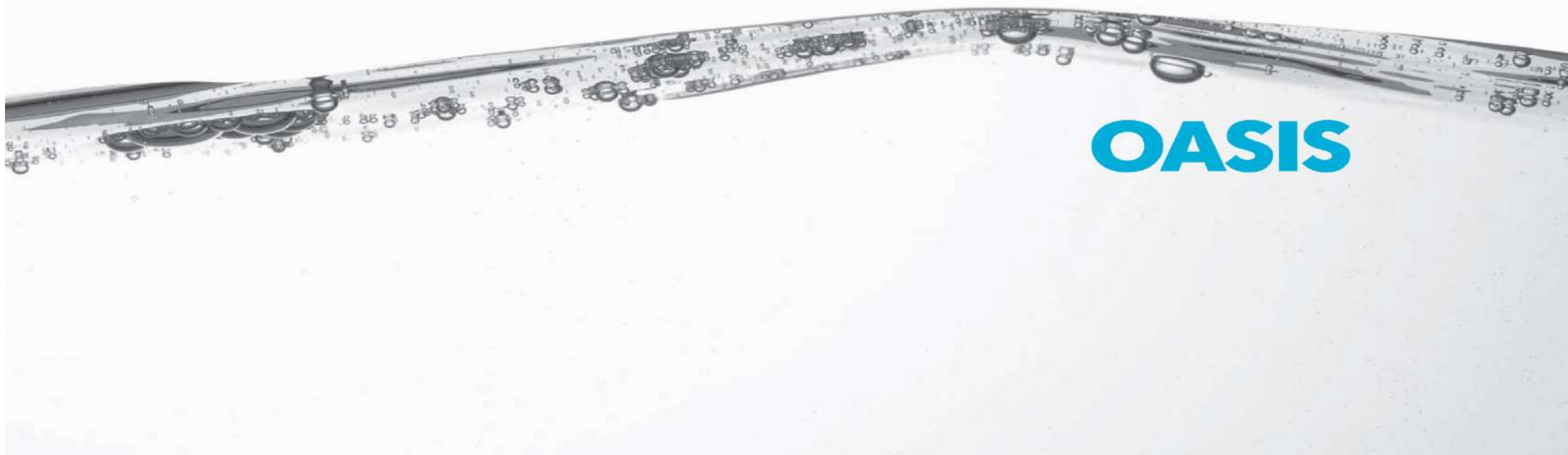
PREVIOUS LOBBY PHOTOS





INITIAL CONCEPT





OASIS

INITIAL CONCEPT





LAYERS

INITIAL CONCEPT





LIGHT

INITIAL CONCEPT





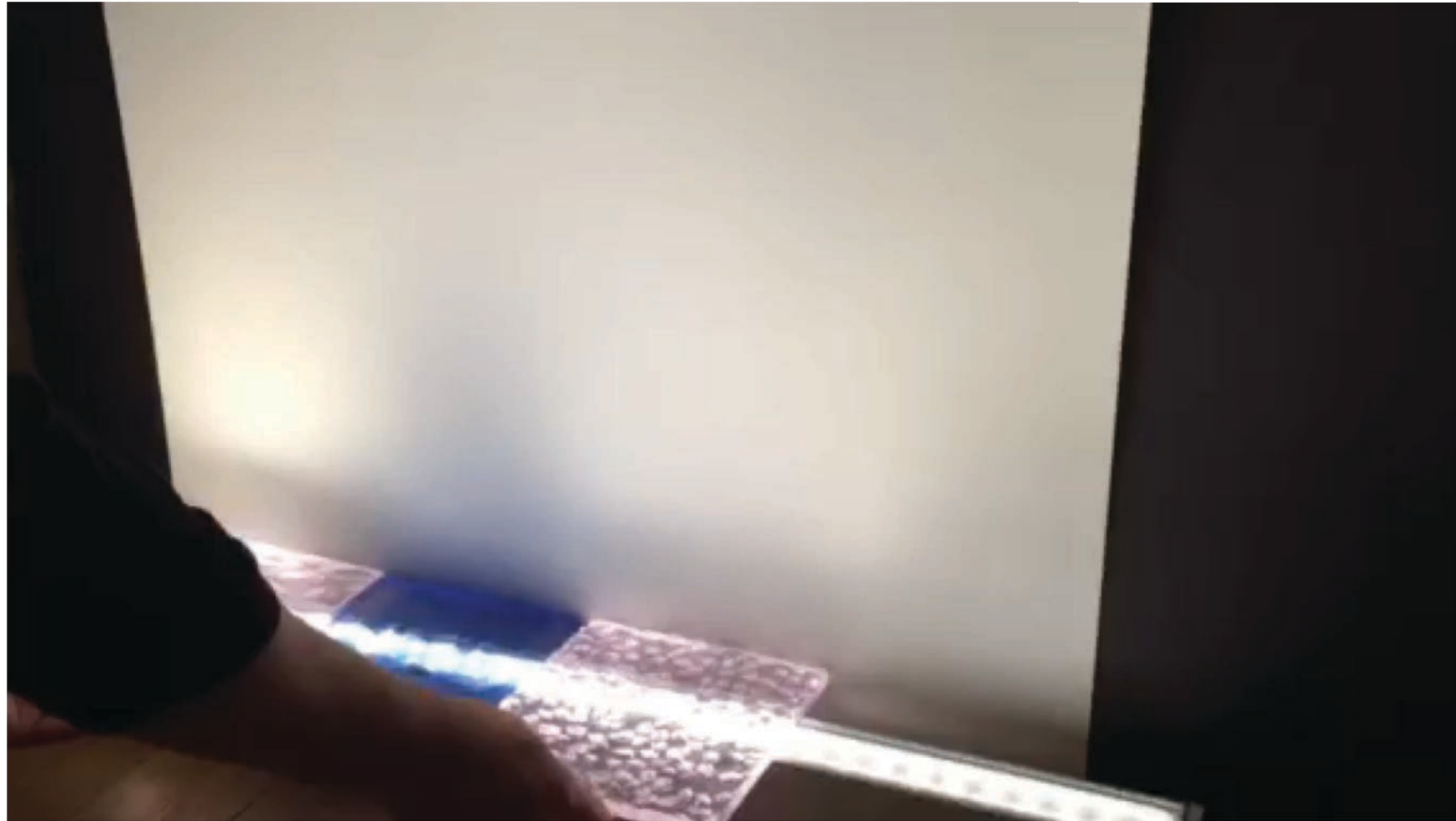
PROPOSED RENDERING





PROPOSED RENDERING





Conceptual LIGHTING STUDIES



LIGHTING DESIGN GOALS

- Soft ambient illumination
- Processional of forms and textures
- Visual hierarchy of destinations
- Subtle movement and environmental change

Conceptual **LIGHTING STUDIES**





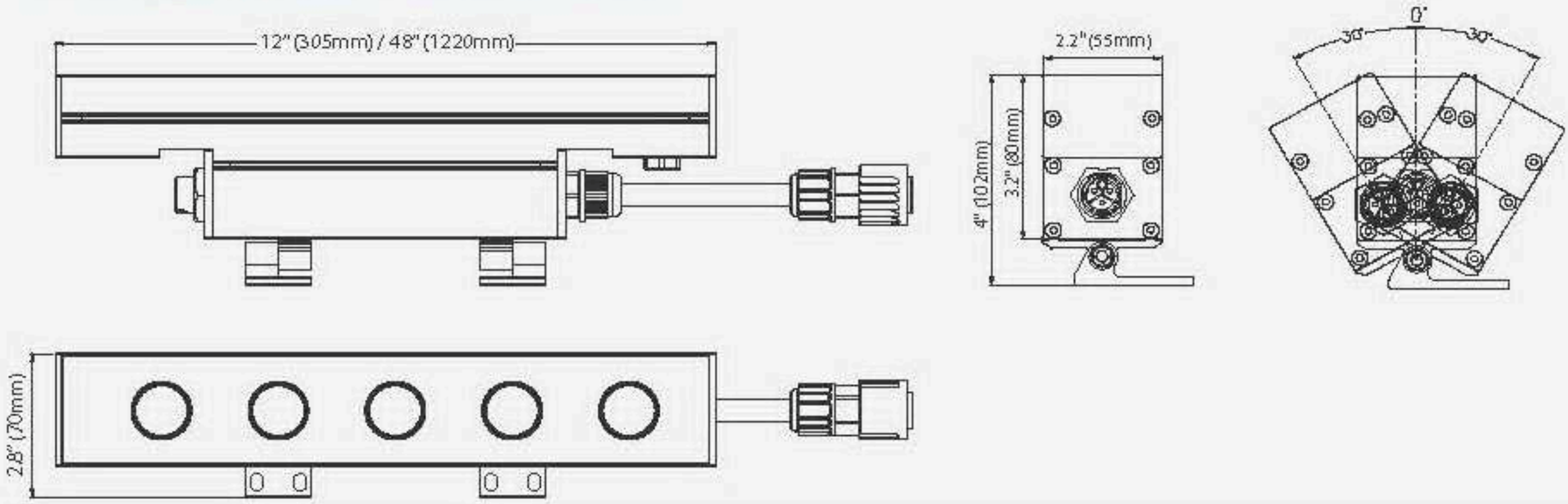
Conceptual LIGHTING STUDIES





Conceptual LIGHTING STUDIES





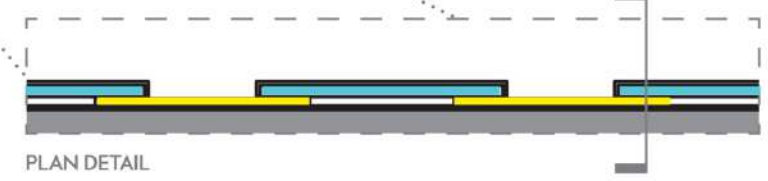
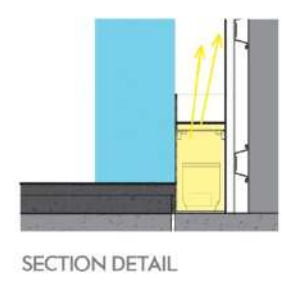
Conceptual LIGHTING STUDIES










Conceptual LIGHTING STUDIES

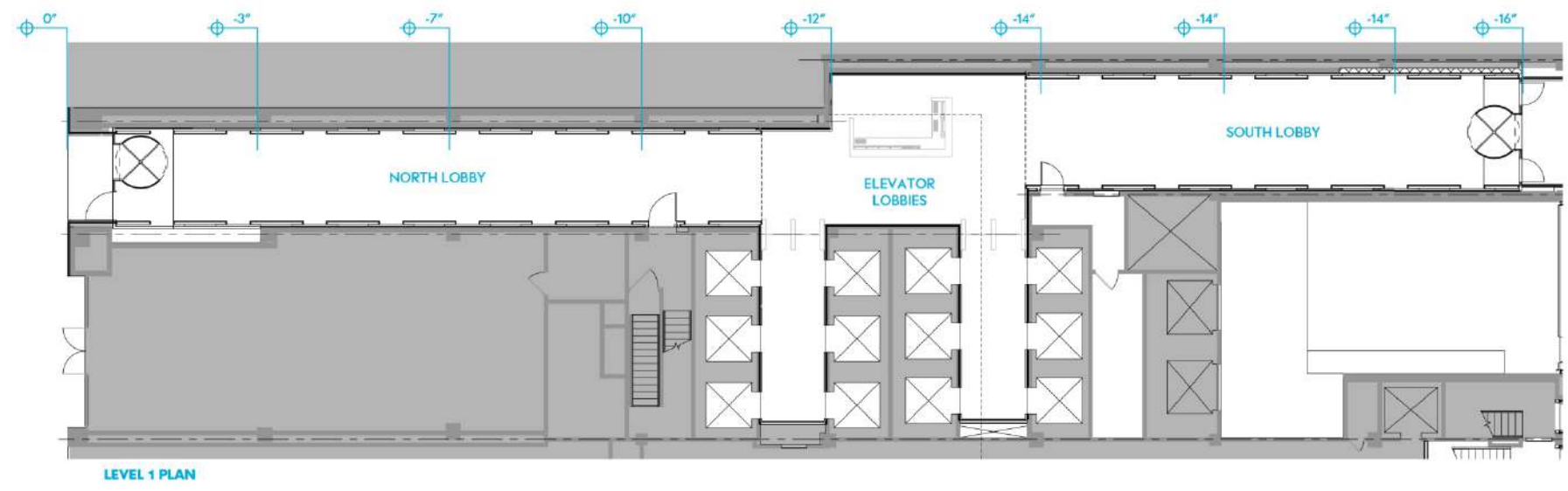
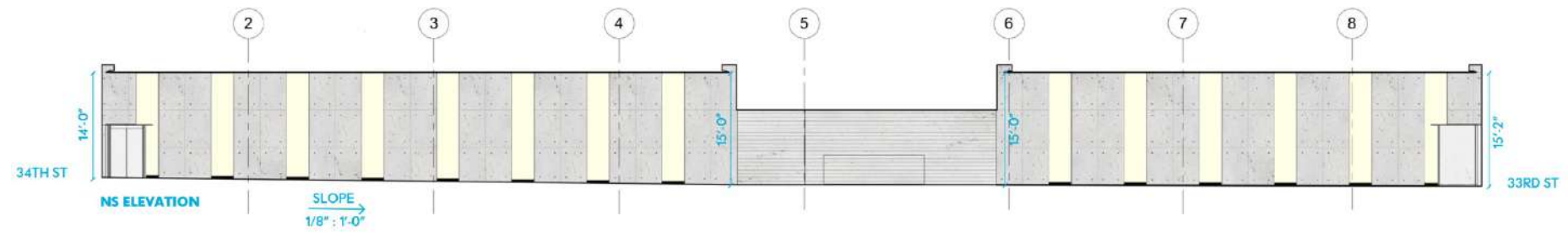




- CONCRETE 
- FLOOR LIGHT 
- GLASS 
- SS 
- BOARD FORMED CONC. 

PROPOSED DESIGN

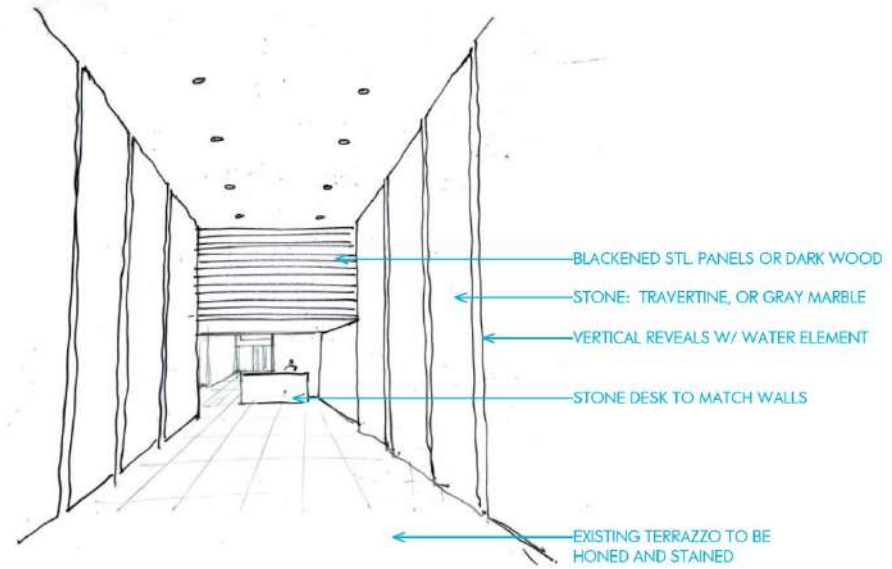
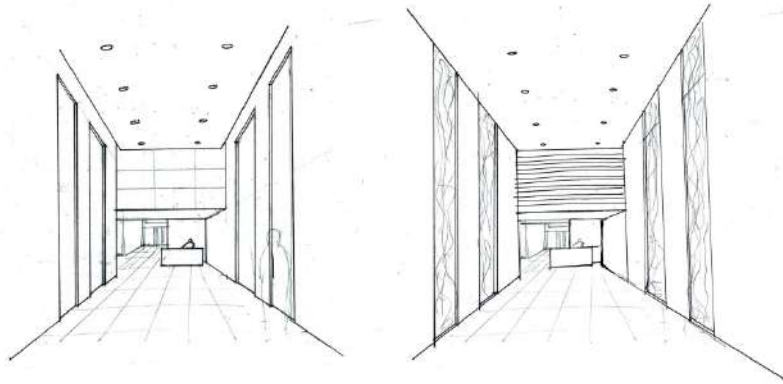




OVERALL LOBBY PLAN & INTERIOR ELEVATION
 111 W 33RD STREET
 April 18, 2016

PROPOSED DESIGN





PROPOSED DESIGN



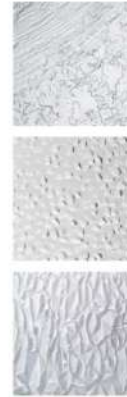


WALL ELEVATION



AT TROUGH

+



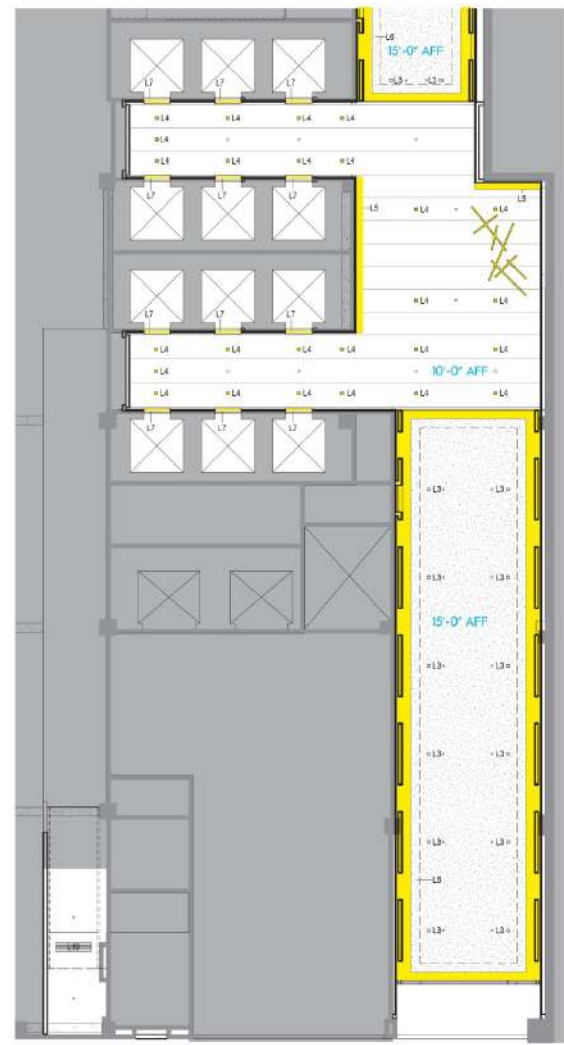
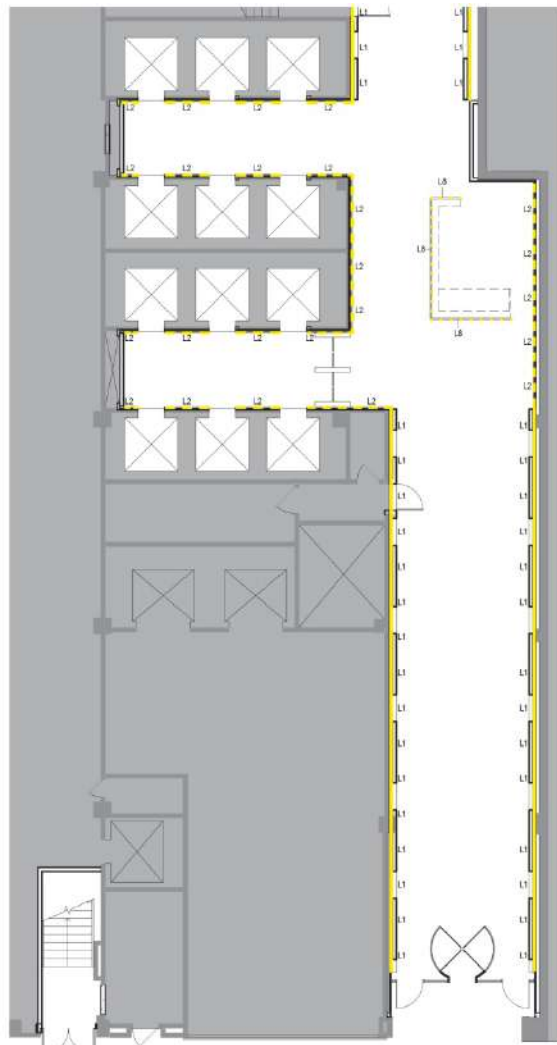
AT TROUGH

=



ON WALL

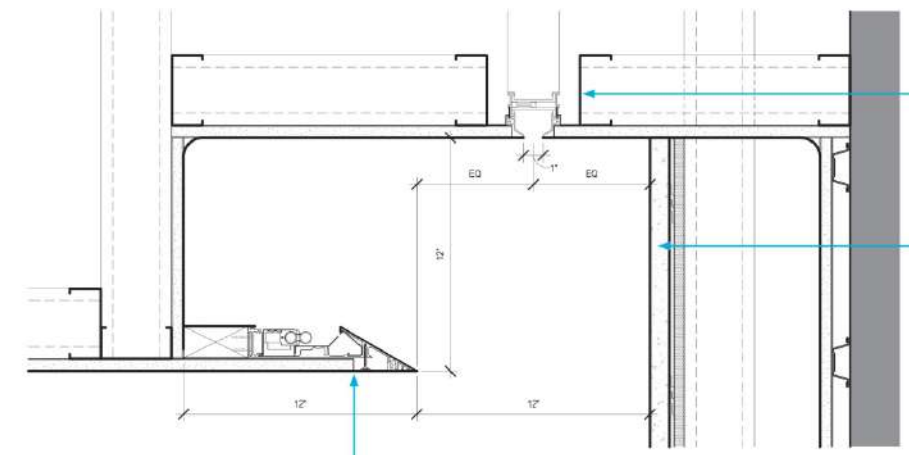
PROPOSED DESIGN



- L1 RECESSED FLOOR ACCENT LIGHT
- L2 FLUSH FLOOR ACCENT LIGHT
- L3 SQUARE DOWNLIGHT
- L4 SQUARE DOWNLIGHT
- L5 PERIMETER WALL WASH
- L6 PERIMETER COVE
- L7 ELEVATOR JAMB DOWNLIGHT
- L8 INDUSTRIAL STRIP LIGHT

PROPOSED RCP



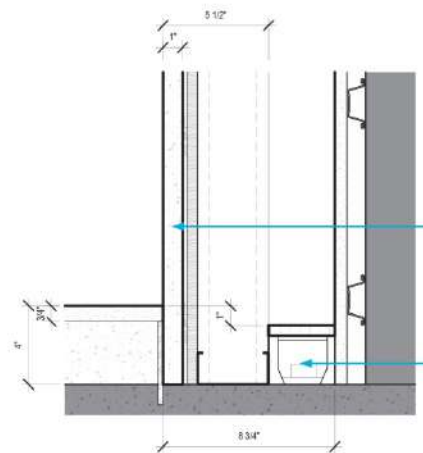


DETAIL AT HEAD

SUPPLY / RETURN AIR DIFFUSER
IN LIGHT COVE

LOBBY CONCRETE PANEL
WALL SYSTEM

PERIMETER KNIFE EDGE
COVE LIGHT

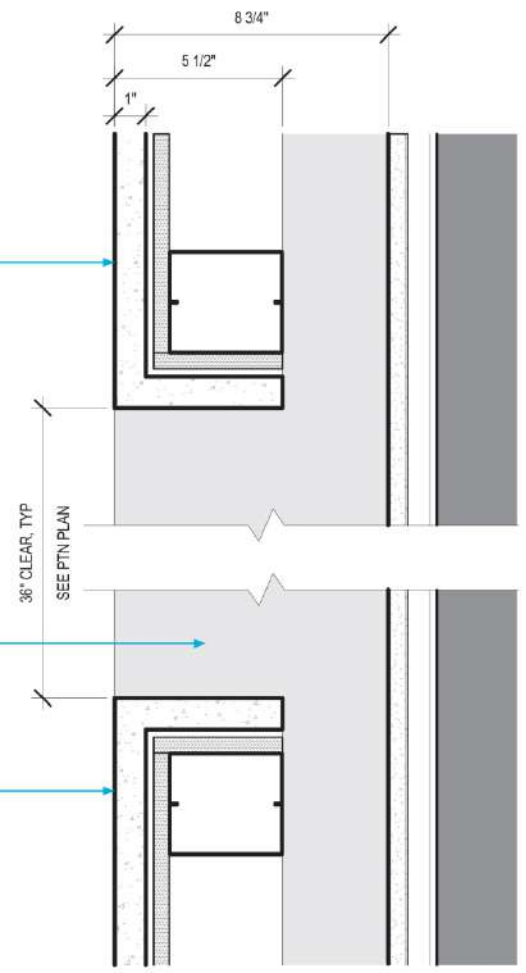


DETAIL AT BASE

CONTINUOUS UP LIGHT
BEHIND CONCRETE PANEL
SYSTEM

LOBBY CONCRETE PANEL
WALL SYSTEM

RECESS AT PERIMETER OF
FLOOR WITH LENSED UP-LIGHT



PLAN DETAIL

PROPOSED DETAILS





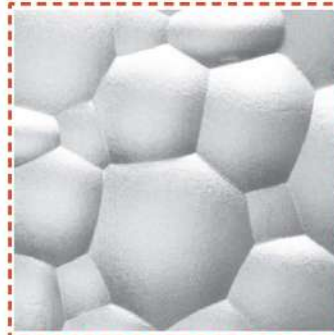
GFRC CONCRETE WALL PANEL



BLACK ABSOLUTE GRANITE FLOOR



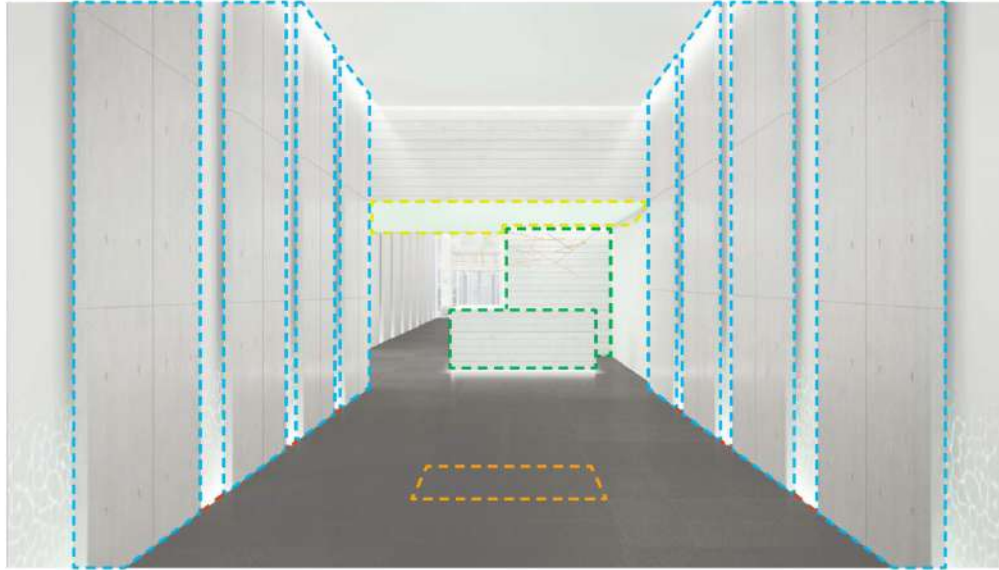
BOARD FORMED CONCRETE WALL PANEL



3FORM ACRYLIC LENS



GREEN GLASS CEILING



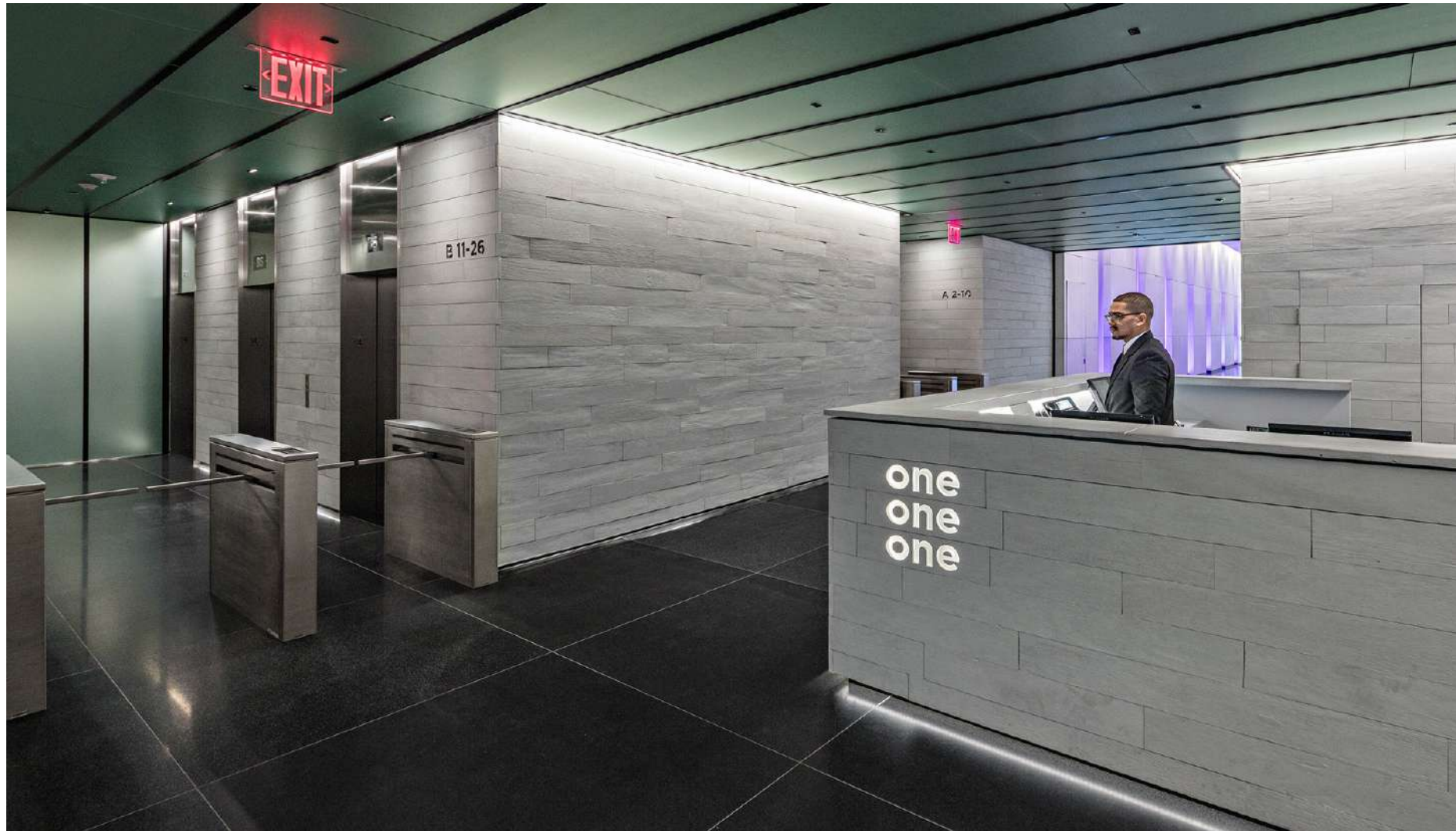
PROPOSED MATERIALS





COMPLETED PROJECT





COMPLETED PROJECT





COMPLETED PROJECT





COMPLETED PROJECT





COMPLETED PROJECT





COMPLETED PROJECT





COMPLETED PROJECT





COMPLETED PROJECT



QUESTIONS?



This concludes The American Institute of Architects Continuing
Education Systems Course

