

Designers Lighting Forum

A Refined Approach to Exterior and Landscape Lighting within DarkSky Recommendations

Kathryn Toth

March 19, 2024



Credit(s) earned on completion of this course will be reported to **AIA CES** for AIA members. Certificates of Completion for both AIA members and non-AIA members are available upon request.

This course is registered with **AIA CES** for continuing professional education. As such, it does not include content that may be deemed or construed to be an approval or endorsement by the AIA of any

material of construction or any method or manner of handling, using, distributing, or dealing in any material or product.

Questions related to specific materials, methods, and services will be addressed at the conclusion of this presentation.



A Refined Approach to Exterior and Landscape Lighting within DarkSky Recommendations



Learning Objectives

At the end of the course, participants will be able to:

1. Discern DarkSky friendly non-traditional techniques to exterior and pathway lighting through the use of landscape lighting.

Learning Objectives

At the end of the course, participants will be able to:

1. Discern DarkSky friendly non-traditional techniques to exterior and pathway lighting through the use of landscape lighting.
2. Recognize the impact of glare on true visibility and the mis-perception of safety with more light.

Learning Objectives

At the end of the course, participants will be able to:

1. Discern DarkSky friendly non-traditional techniques to exterior and pathway lighting through the use of landscape lighting.
2. Recognize the impact of glare on true visibility and the mis-perception of safety with more light.
3. Understand the importance of night time site surveys as a critical part of the design process in order to analyze existing ambient lighting and recognize the impact of adjacent lighting on the design solution.

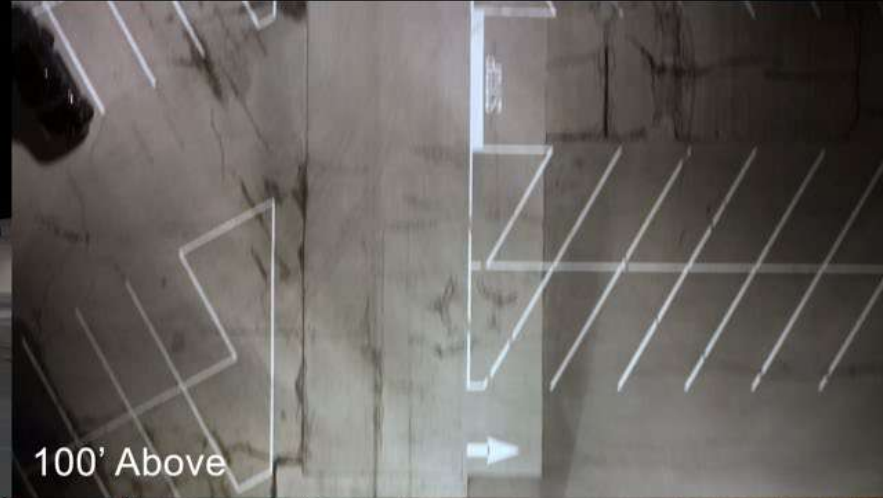
Learning Objectives

At the end of the course, participants will be able to:

1. Discern DarkSky friendly non-traditional techniques to exterior and pathway lighting through the use of landscape lighting.
2. Recognize the impact of glare on true visibility and the mis-perception of safety with more light.
3. Understand the importance of night time site surveys as a critical part of the design process in order to analyze existing ambient lighting and recognize the impact of adjacent lighting on the design solution.
4. Realize environmental impacts of site lighting, effects on wildlife, and how to achieve DarkSky compliance.



Parking Lot Metal Halide



Video provided by Tim Ryan, Lighthouse Design Studio



Landscape Lighting

Up & Down Lights in Design



This Frame was brightened 2 stops just so it could be seen in this video



200' Above



100' Above



300' Above



What are we doing?
What can we do about this?



Walkways, Pathways & Stairs, oh my!

& Adjacent Glare















Villanova, Pennsylvania





Villanova, Pennsylvania





Ridgewood, New Jersey







Ridgewood, New Jersey











Existing Conditions







Existing Conditions



Existing Conditions



Proposed Solution





Camp Waldemar, Hunt, Texas















Glare & Light Trespass: Night Site Survey















Nagoya, Japan

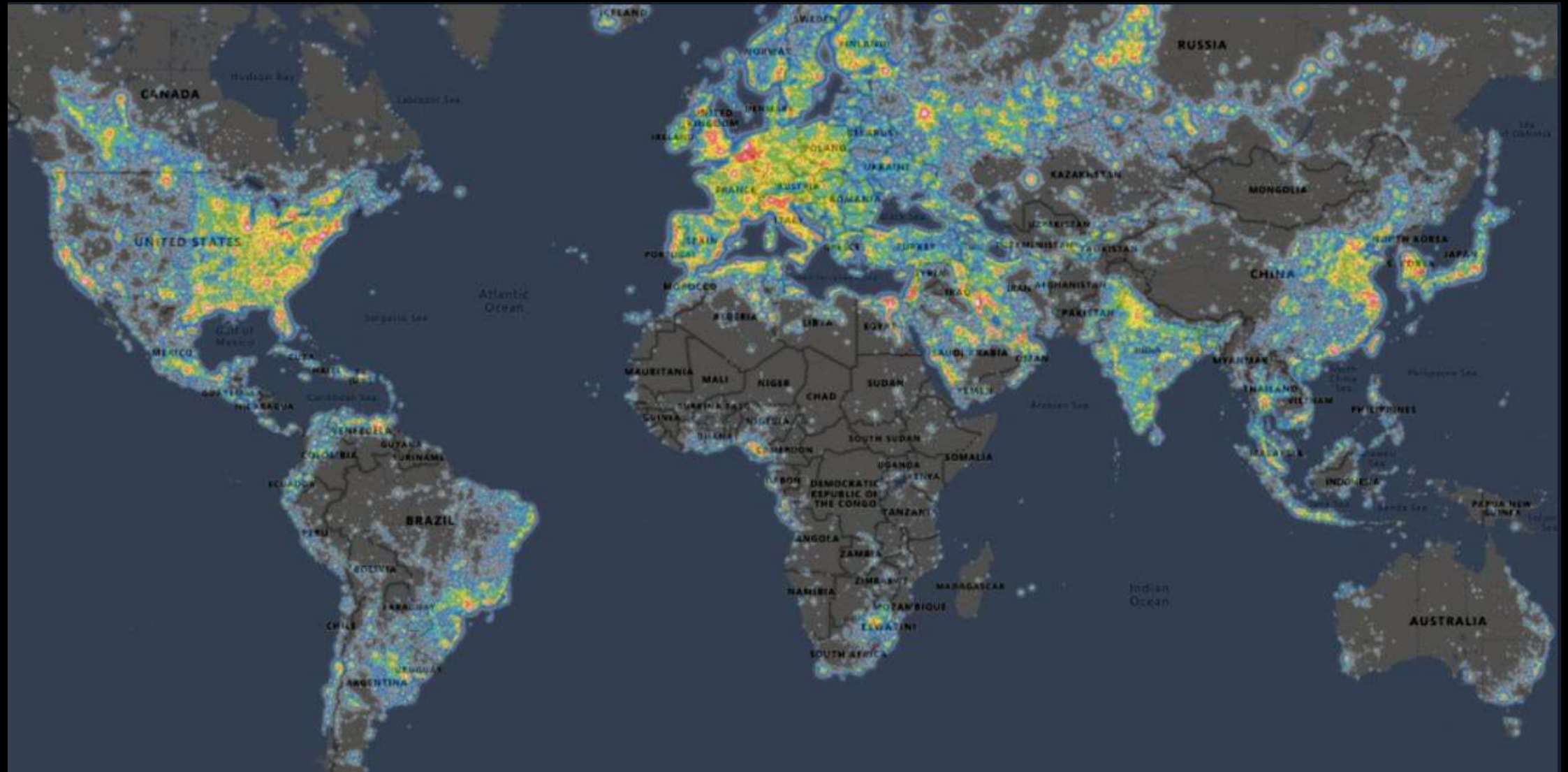








Light Pollution & Environmental Impacts



The Five Principles for Outdoor Lighting -from DarkSky

1 – Useful

2 – Targeted

3 – Low Level

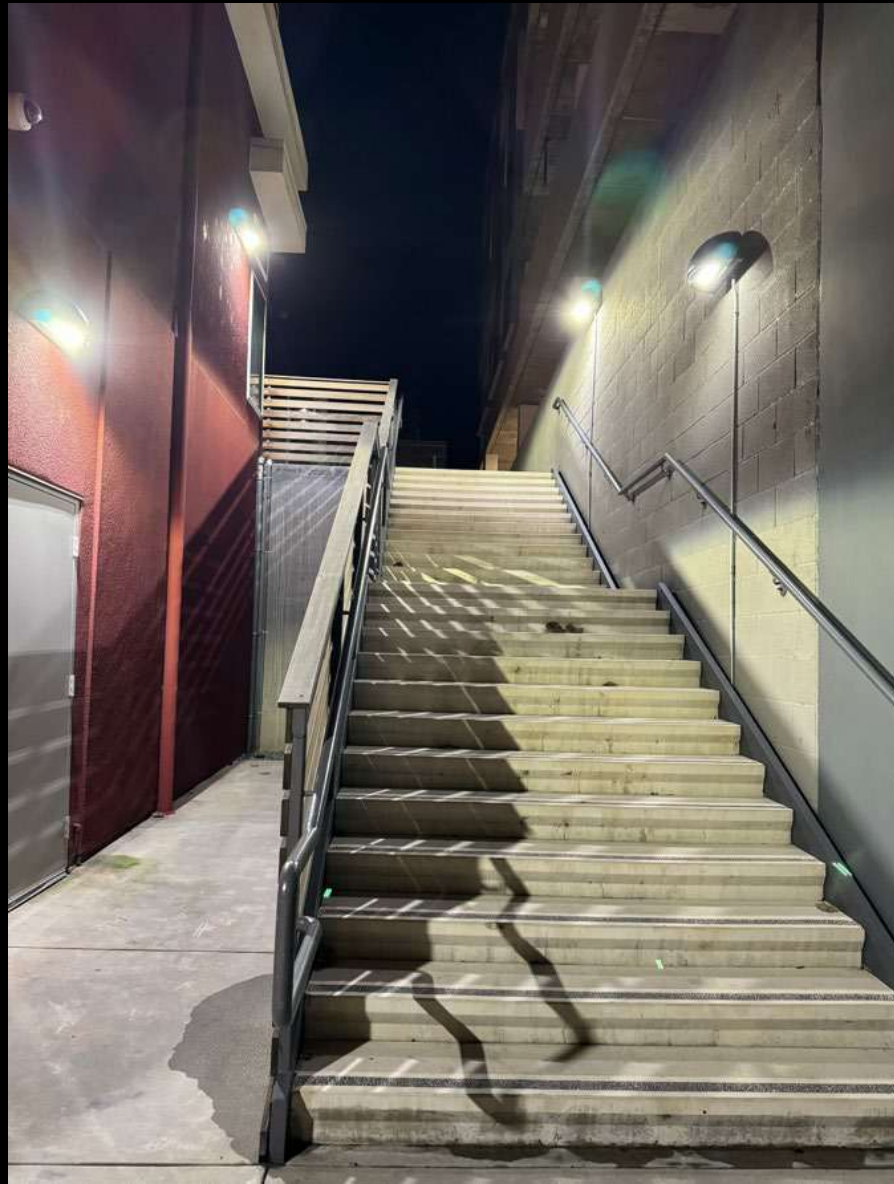
4 – Controlled

5 – Warm CCT



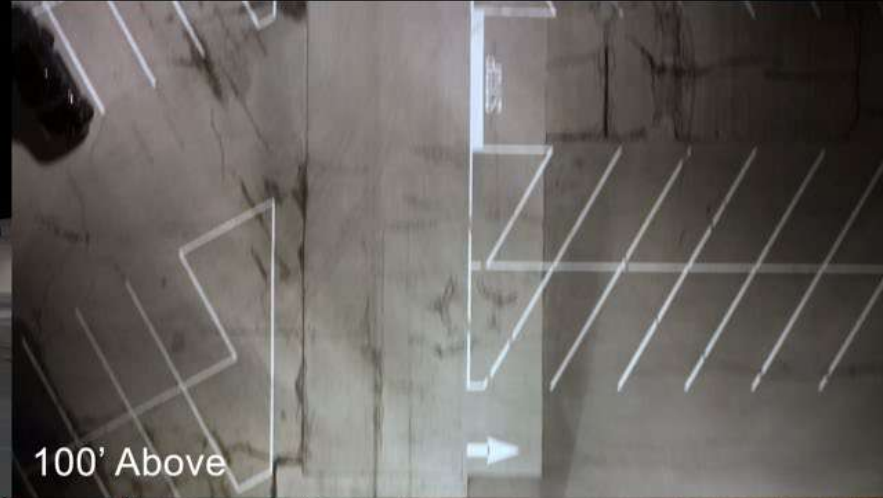








Parking Lot Metal Halide



Video provided by Tim Ryan, Lighthouse Design Studio

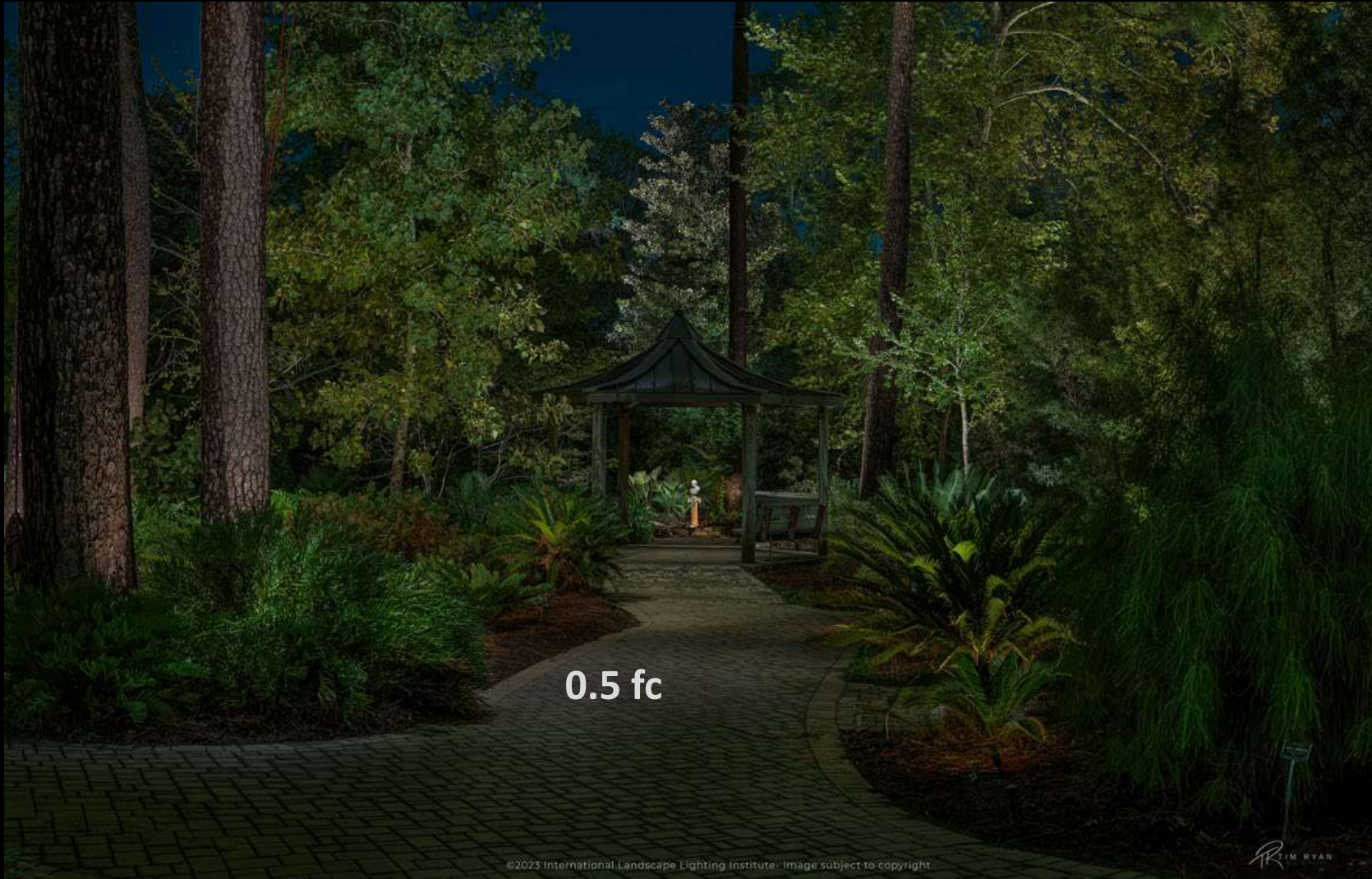




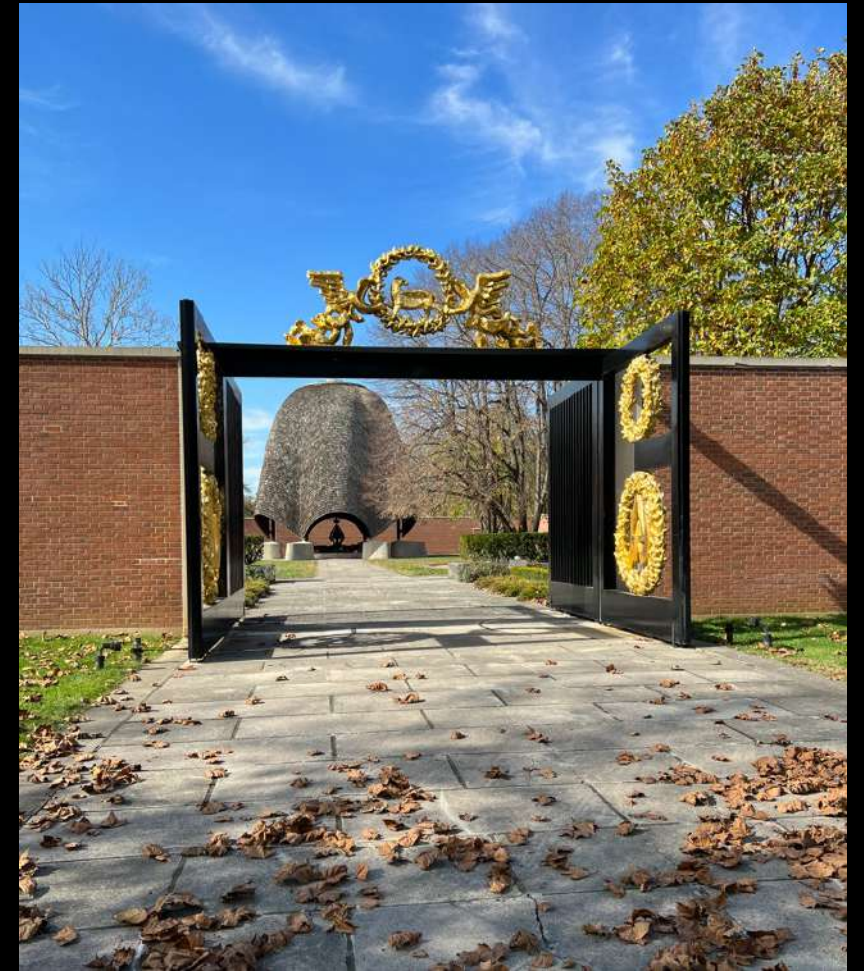
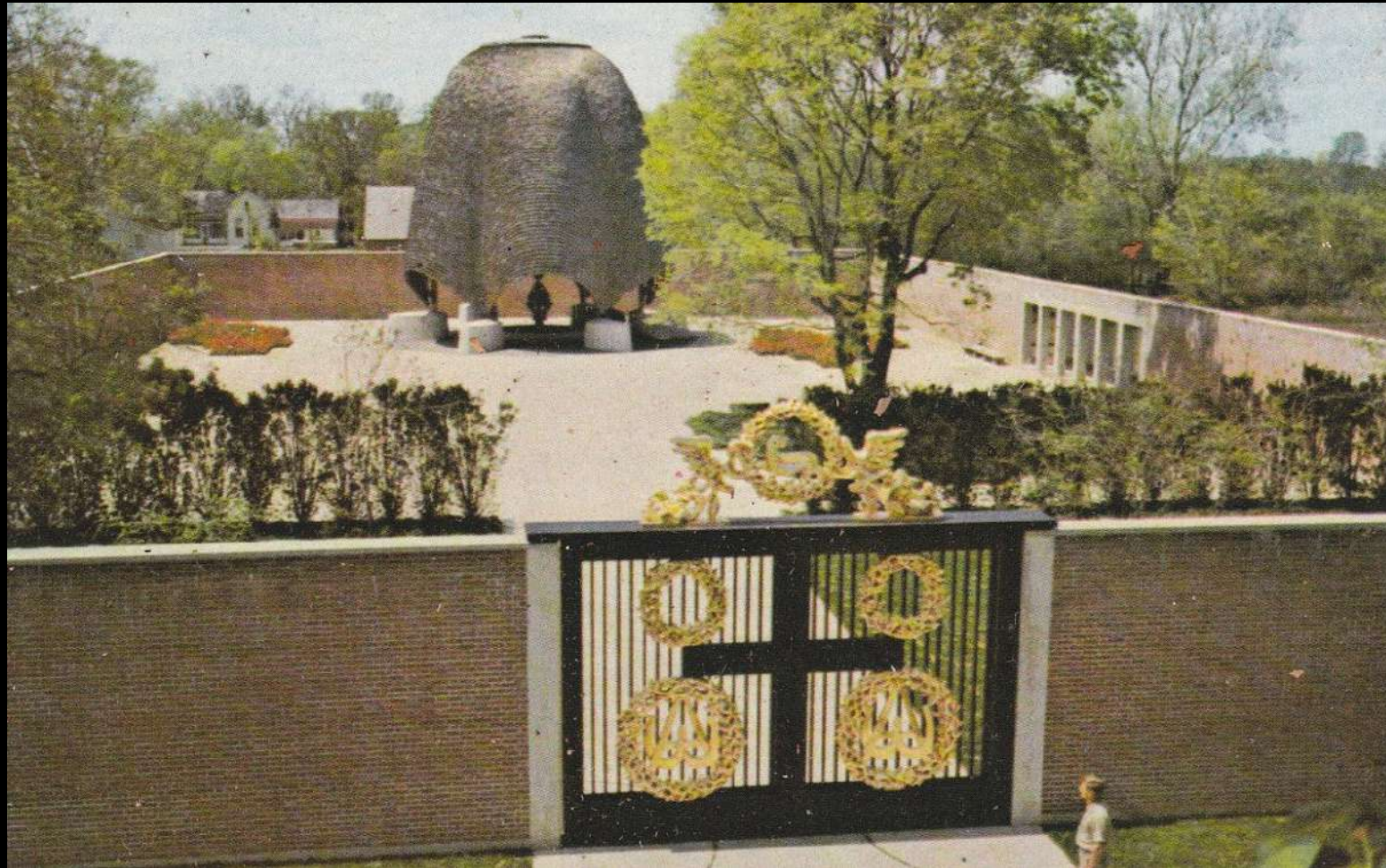
Mercer Botanic Gardens, Houston, Texas













Before









RR
1111



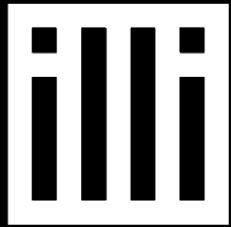


RR



This concludes The American Institute of Architects Continuing
Education Systems Course





International
Landscape Lighting
Institute®



Jeff Kamm, AIA



Tim Ryan



Kathryn Toth

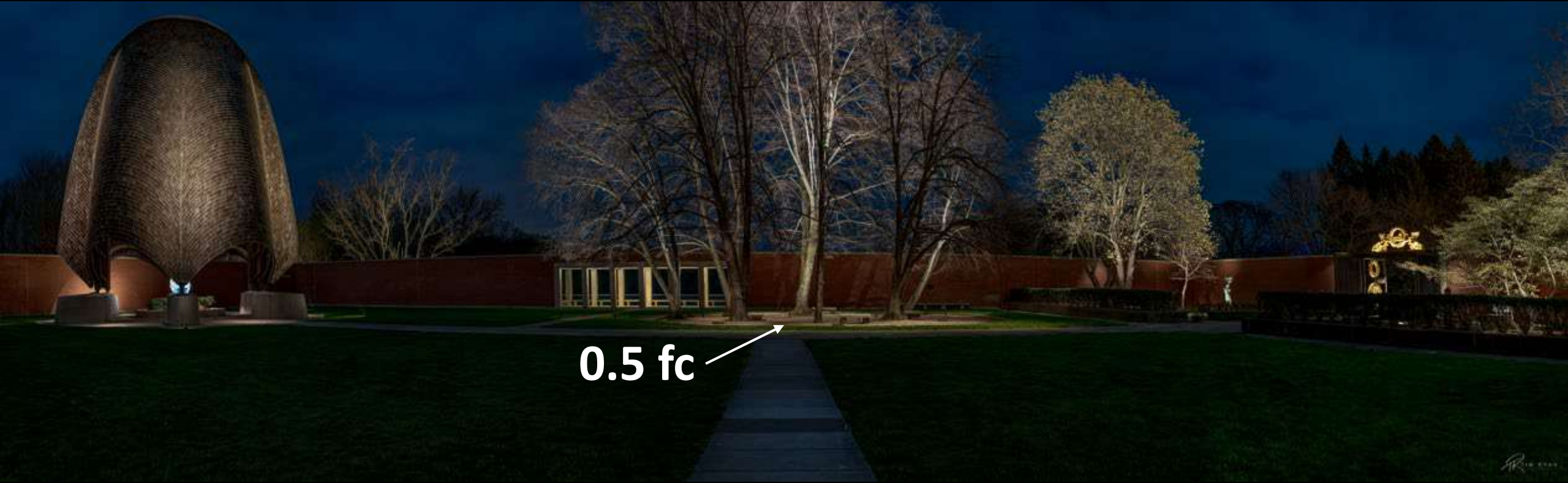





0 fc

Before





0.5 fc 

After





RR







Group 2 - Before













In Progress















