

Designers Lighting Forum

Architectural Case Study:

*Bold Exterior Choices at
the Gershwin Theatre*

Christien Methot

March 2024



Credit(s) earned on completion of this course will be reported to **AIA CES** for AIA members. Certificates of Completion for both AIA members and non-AIA members are available upon request.

This course is registered with **AIA CES** for continuing professional education. As such, it does not include content that may be deemed or construed to be an approval or endorsement by the AIA of any material of construction or any method or manner of handling, using, distributing, or dealing in any material or product.

Questions related to specific materials, methods, and services will be addressed at the conclusion of this presentation.



LEDEducation.org

Learning Objectives

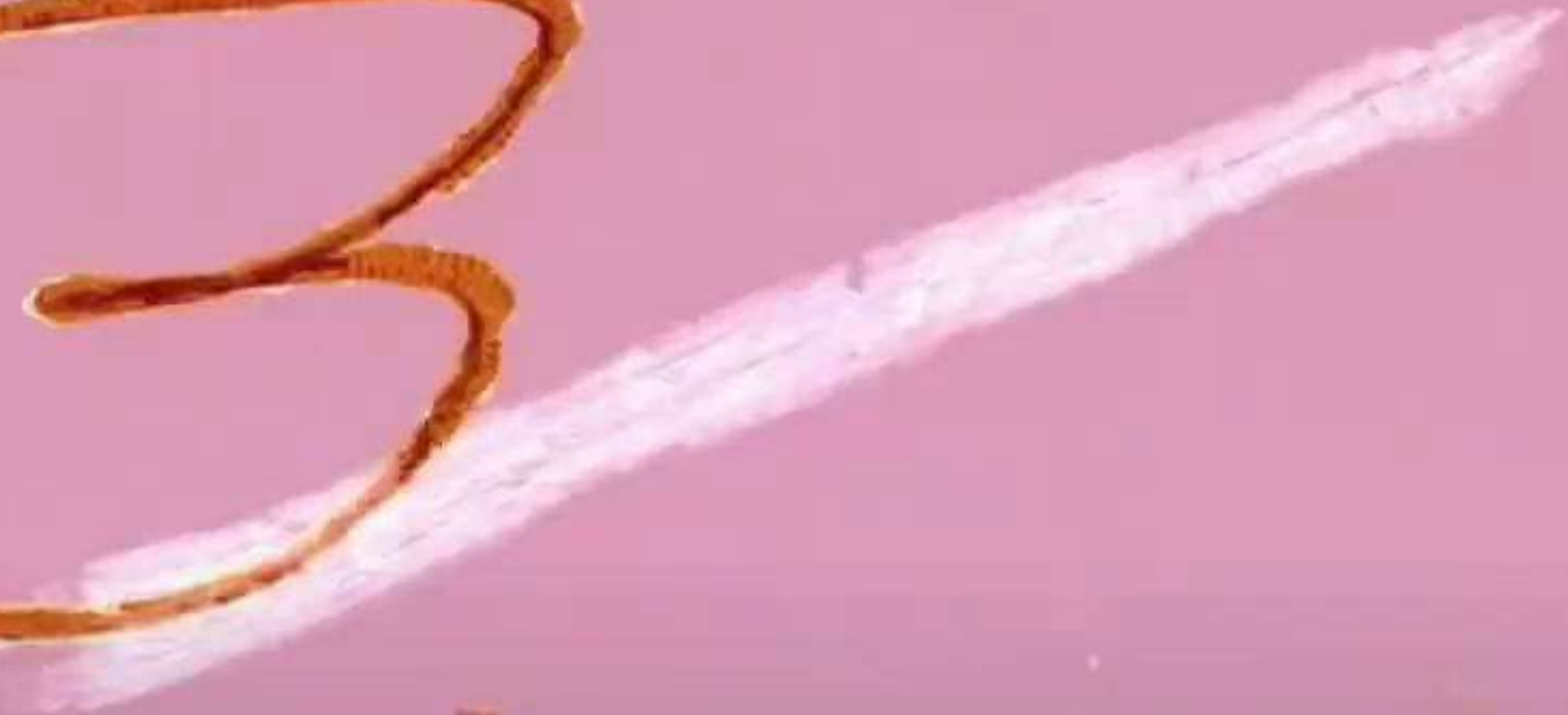
1. The importance of working closely with the design and construction team from concept to installation.
1. The importance of doing full scale mockups.
1. The importance of being wellresearched on what is available on the market.
1. The difference of owning the lighting and controls from top to bottom.
1. Not relying heavily on others to fill in the blanks.







00:01:25:15









Credit: Design One Lighting

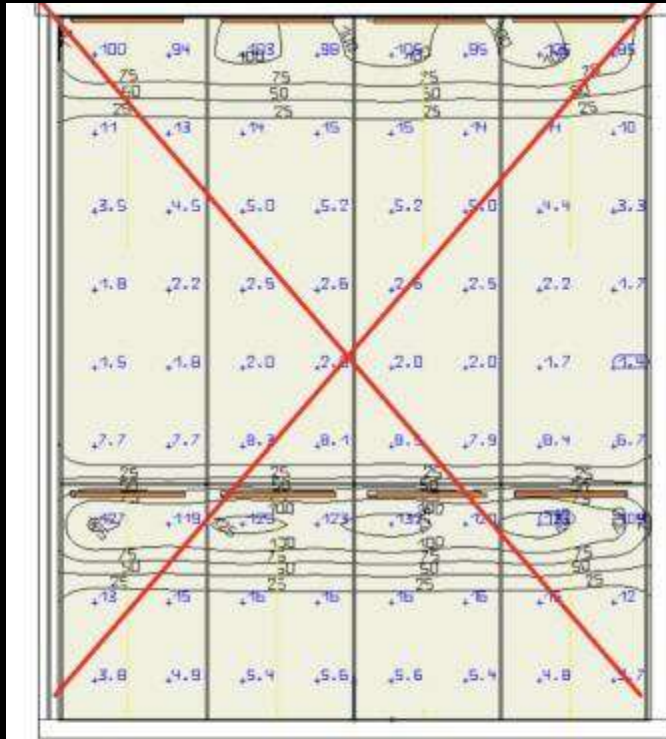




Credit: Design One Lighting



LEDucation.org



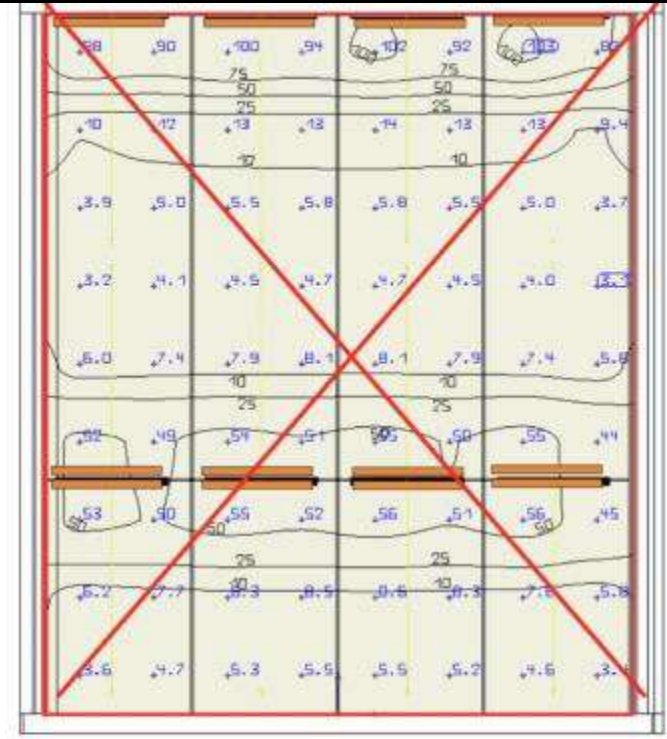
Fixtures at top of modules (4 feet fixtures)

Situation similar for fixtures at top or bottom.

As distance is important and angle of 6 degree of fixtures, aiming at the middle of the surface generates that the middle of the panel has a very low level

Distance from fixtures to plane is 10 inches

We believe this is not a viable solution per calculation



Fixtures at top and bottom of modules (4 feet fixtures)

Situation similar for fixtures at top or bottom.

As distance is important and angle of 6 degree of fixtures, aiming at the middle of the surface generates that the middle of the panel has a very low level

Distance from fixtures to plane is 10 inches

We believe this is not a viable solution per calculation

design one
lighting design

Gershwin Theater NY, NY

ELEVECTURE

Tunable white or RGB solution

400 lumens / foot @ 4.75 w/foot
Tunable white selected

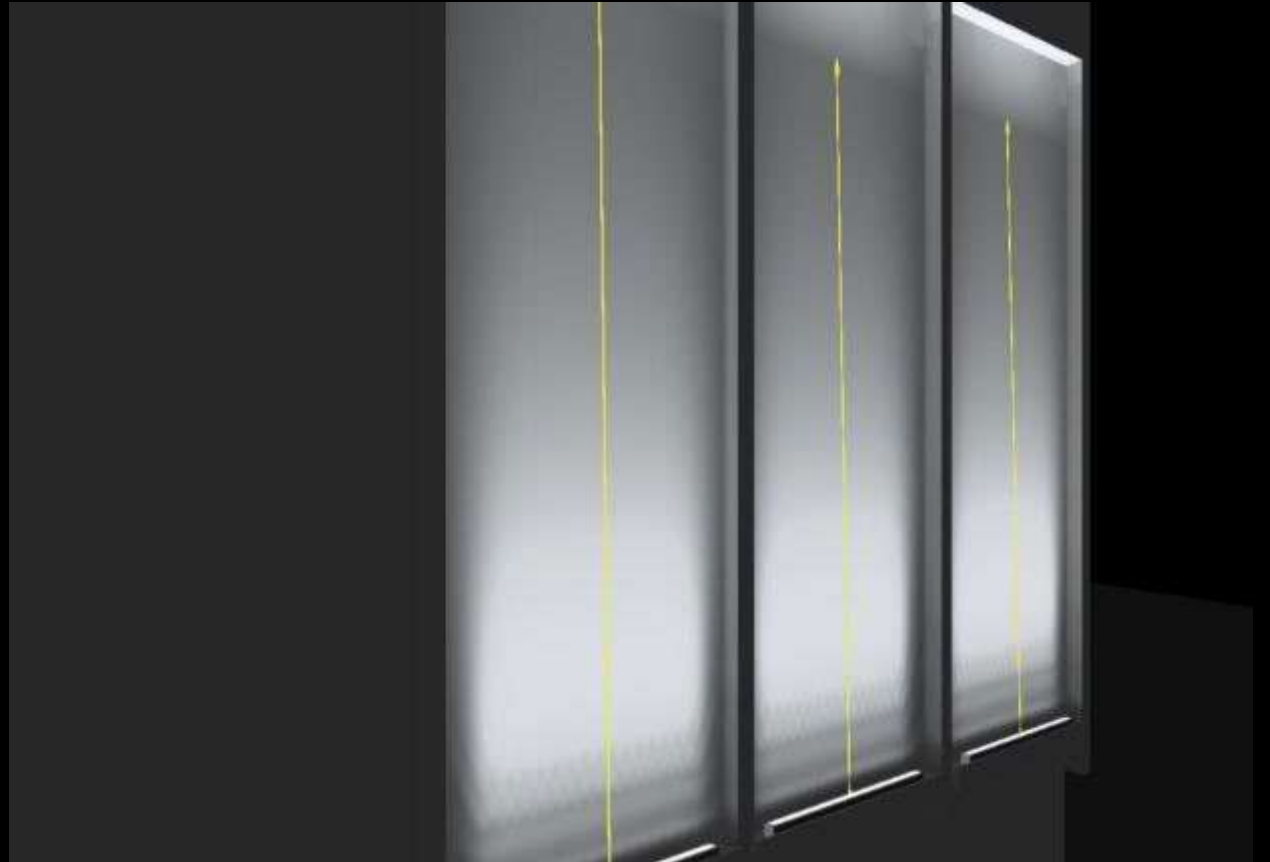
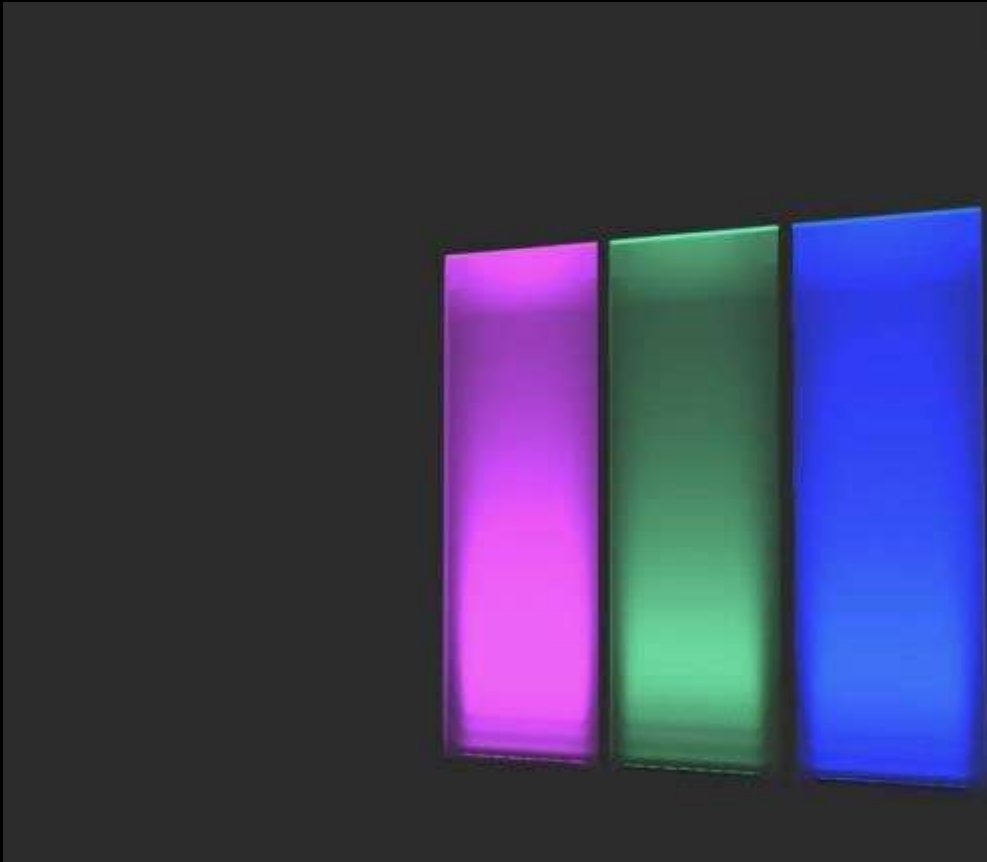
Credit: Design One Lighting





Credit: Philip Romano





Credit: Griven



LEDucation.org



Credit: Design One Lighting



LEDucation.org

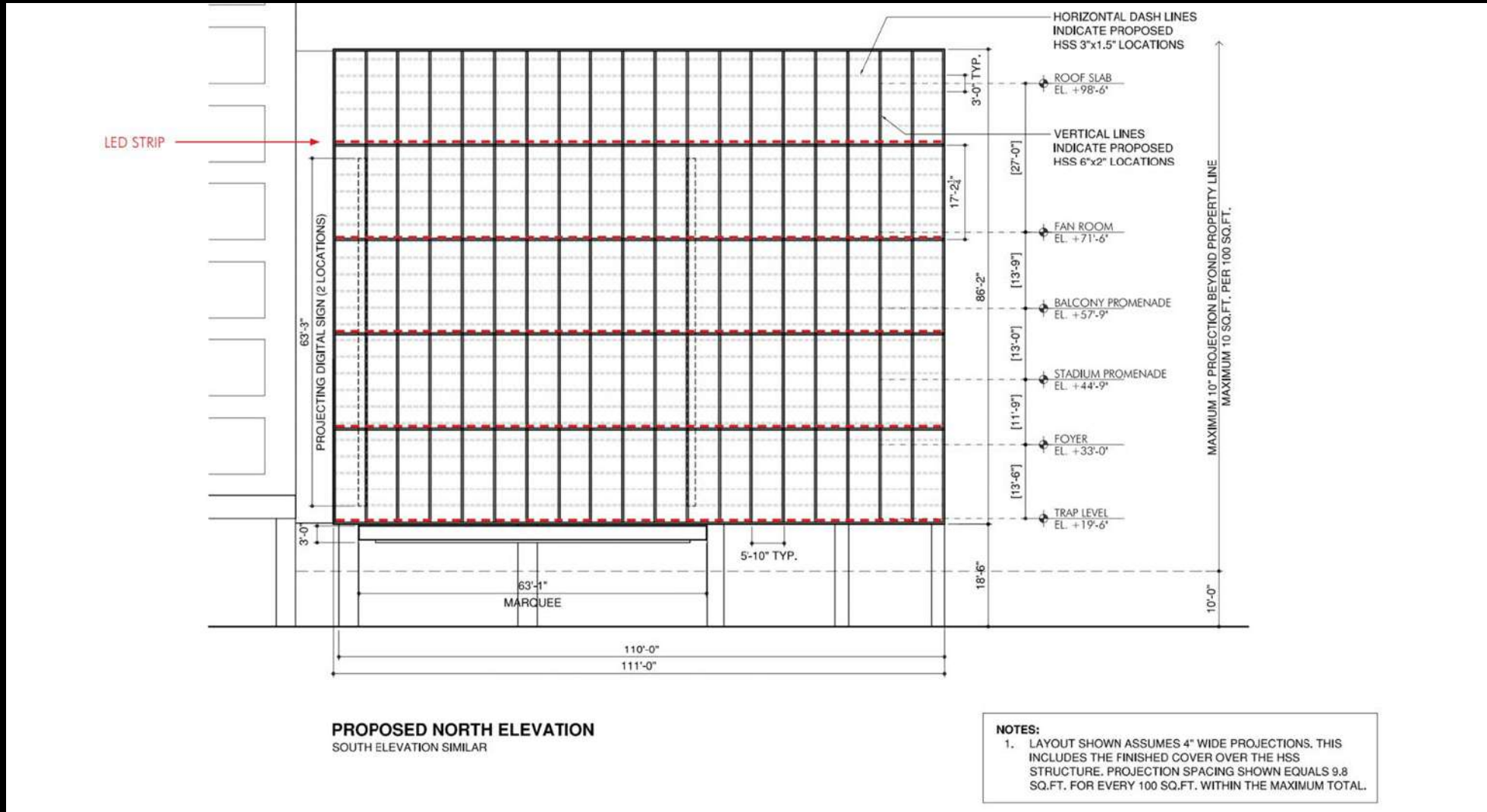


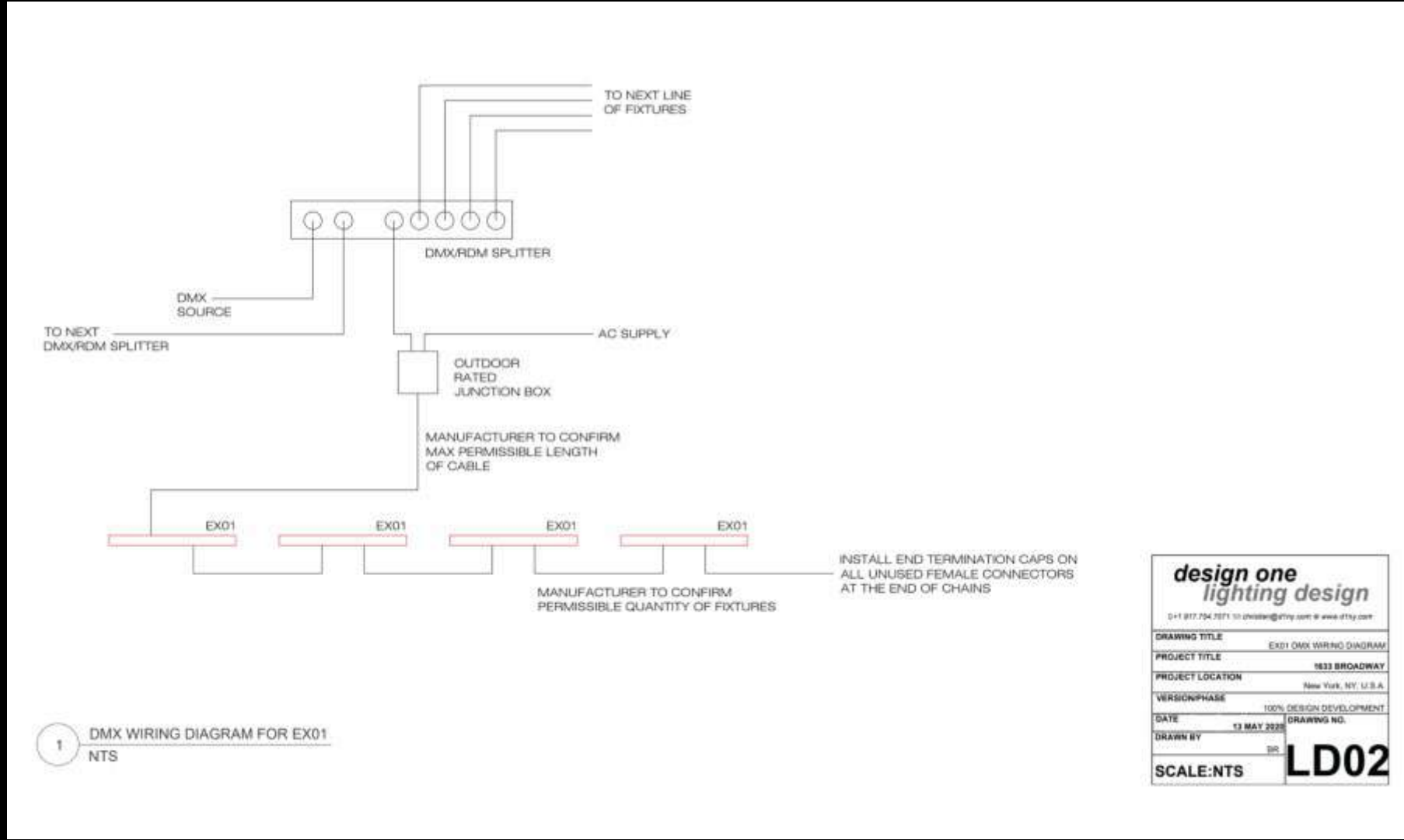
Credit: Design One Lighting



LEDucation.org



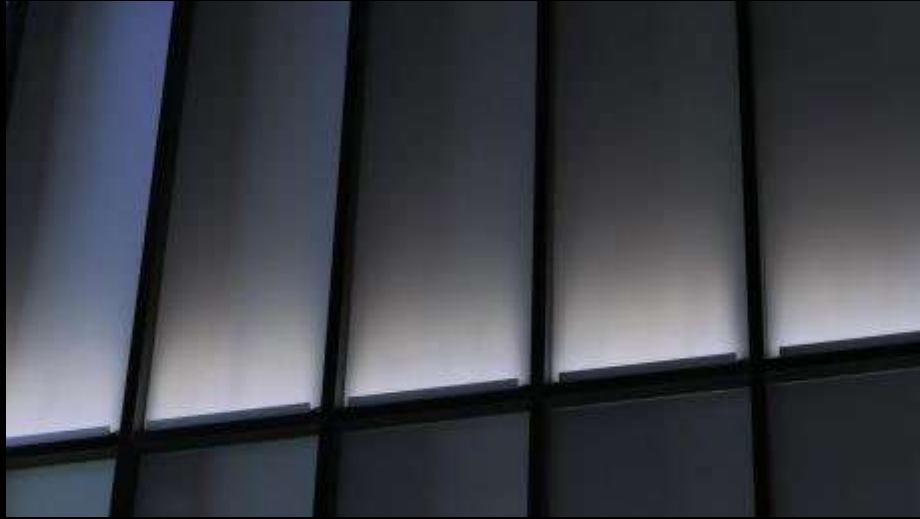




design one lighting design

0-1 817.754.7871 | 10 daniel@dn1g.com | www.dn1g.com

DRAWING TITLE	EX01 DMX WIRING DIAGRAM	
PROJECT TITLE	1833 BROADWAY	
PROJECT LOCATION	New York, NY, U.S.A.	
VERSION/PHASE	100% DESIGN DEVELOPMENT	
DATE	13 MAY 2022	DRAWING NO.
DRAWN BY	DR	LD02
SCALE:NTS		





Credit: Design One Lighting



design **o**ne lighting

Christien Methot
Founder & Principal Designer

christien@designonelightning.com

This concludes The American Institute of Architects
Continuing Education Systems Course

